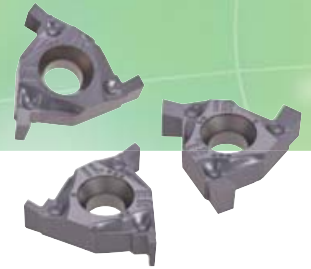


GTGN type

Best solution for external/internal shallow groove machining

New inserts offer high performance and economical advantages



Features

Suitable for highly precise grooving

Accurate ground inserts with sharp edge and excellent chip control

Highly recommended for accurate grooving such as circlip grooving.

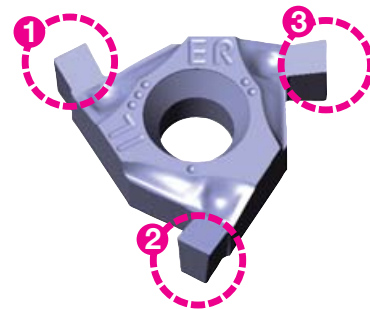
Combining with the SH730 grade, the new range demonstrates high sharpness and stability for long tool life

Groove width W: 1.0 ~ 2.25 mm, tolerance: ± 0.03 mm

Groove depth T: 1.25 ~ 1.8 mm

Economical advantages

- Lay-down insert with 3 cutting edges
- Can be used with a number of toolholders to reduce inventory
By just changing the shim, toolholders for TungThread can be used for GTGN inserts.



Toolholder applicable for both GTGN and TungThread by just changing the shim.



Note: GTGN insert can't be used on specific toolholders that don't need shim.
Shim for GTGN insert can't be applied to competitors' toolholders.

Standard cutting conditions

Work materials	Grades	Cutting speed Vc (m/min)	Feed f (mm/rev)
Steels S45C, SCM440 etc. (C45, 42CrMo4 etc.)	SH730	50 - 150	0.05 - 0.10
Stainless steels SUS304, SUS316 etc. (X5CrNi18-9, X5CrNiMo17-12-2 etc.)		30 - 150	0.05 - 0.10
Heat-resistant alloys, Titanium alloys etc. (Ti-6Al-4V etc.)		30 - 100	0.05 - 0.10