

TUNGALOY
ADD FORCE
ACCELERATED LINES

PROMOTIONS

Valid from 1 July, 2022 to 15 December, 2022



Tungaloy “Bringing metal cutting solutions since 1929”

Tungaloy has had a long history of excellence in the development of materials for metal cutting tools and innovative industrial products.

As the market leader in the development of powder metallurgy and innovative coating technology for high-quality cutting tools, we have the experience, expertise, and the latest equipment to ensure we remain the benchmark in the industry.

Our story



1929 - Shibusse Engineering Works & Tokyo Electric (**Toshiba**) Company collaborate and develop 1st Japanese cemented carbide product. Toshiba Tungaloy is born – “**Tungaloy**” = Tungsten + Alloy.

2004 - **Toshiba Tungaloy** becomes independent from Toshiba and is renamed **Tungaloy Corporation**.

2008 - **Tungaloy Corporation** is acquired by the International Metal Working Companies (**IMC**), owned by Warren Buffett’s Berkshire Hathaway. This leads to huge investment in the very latest machinery, automation and R&D for production of advanced cutting tools and materials.



2010 - **Tungaloy** open multiple subsidiaries across the globe, leading to the birth of **Tungaloy UK Limited**.

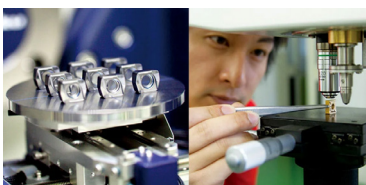


2011 - CEO and Chairman of Berkshire Hathaway, Warren Buffett attends the celebrated opening of the new production plant in Iwaki, Fukushima in Japan.



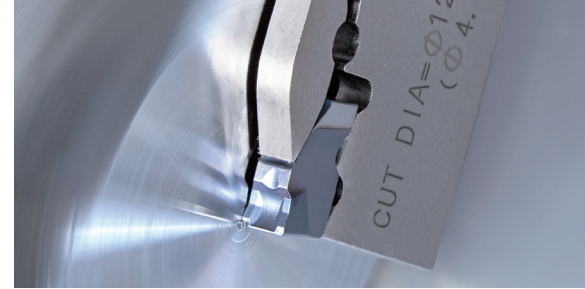
2015 - **Tungaloy** release the TungForce range & PremiumGTec grades.

Continuous improvement of production technologies, combined with further investments in research and development, allows us to offer high-quality products that help manufacturing companies in a wide variety of industries increase their productivity and profitability.



2021 - **Tungaloy** release **AddForce**, a range of cutting tools specifically designed to meet the machining needs of today’s Industry 4.0 digital era. Featuring the latest cutting-edge technology for turning, milling, grooving, and hole-making applications, this collection is an enhanced version of the already impressive existing product lines.

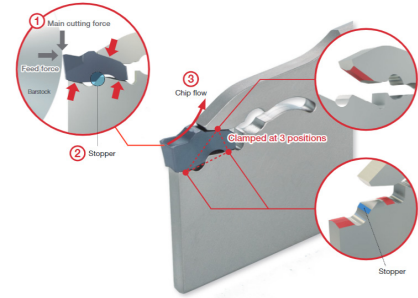




EXCELLENT STABILITY FOR DEEP GROOVING & PARTING-OFF DUE TO UNIQUE INSERT CLAMP

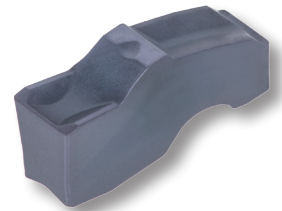
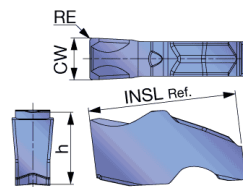
Newly developed clamping system provides higher tool rigidity, increased stability and reliability for deep grooving and parting-off.

- 1 - Insert bottom ensures secure edge position for excellent repeatability
- 2 - Secure pocket designed with three contact faces for stability
- 3 - Smooth uninterrupted chip flow thanks to two variations of effective 3D chipbreakers



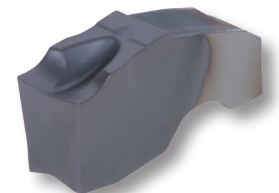
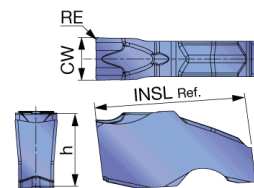
QGM Single-ended insert, 1st choice for grooving & parting

Designation	SSC	CW	CWTOL	RE	INSL	h	OFFER PRICE PER INSERT
QGM2-020 AH7025	2	2	0.05	0.2	11	5.3	£8.13
QGM3-020 AH7025	3	3	0.05	0.2	11	5.3	£8.51
QGM4-030 AH7025	4	4	0.05	0.3	13	7.3	£8.69
QGM5-030 AH7025	5	5	0.05	0.3	13	7.3	£9.72



QGS Single-ended insert, lower cutting force and superior sharpness

Designation	SSC	CW	CWTOL	RE	INSL	h	OFFER PRICE PER INSERT
QGS2-020 AH7025	2	2	0.05	0.2	11	5.3	£8.13
QGS3-020 AH7025	3	3	0.05	0.2	11	5.3	£8.51
QGS4-030 AH7025	4	4	0.05	0.3	13	7.3	£8.69
QGS5-030 AH7025	5	5	0.05	0.3	13	7.3	£9.72



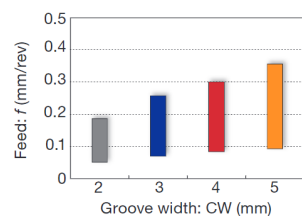
STANDARD CUTTING CONDITIONS

ISO	Workpiece material	Hardness	Grade	Cutting speed Vc (m/min)
P	Steels C45, 34CrMo4, etc.	< 300 HB	AH7025	50 - 180
M	Stainless steel X10CrNiS18-9, etc.	< 200 HB	AH7025	50 - 120
K	Gray cast iron GG25, 250, etc.	-	AH7025	50 - 180
	Ductile cast irons GGG45, 450-10S, etc.	-	AH7025	50 - 120
S	Superalloys Inconel718, etc.	< HRC 40	AH7025	20 - 60
	Titanium alloys Ti-6Al-4V, etc.	< HRC 40	AH7025	20 - 80



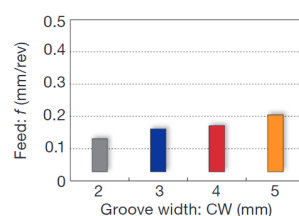
QGM

Standard feed



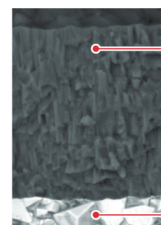
QGS

Standard feed



GRADE

AH7025



AH7025 uses the latest coating technology of a nano-scale multi-layered AlTiN PVD coating with high Al content, featuring

- Coating hardness increased by 20%
- A multi-layered coating structure impedes micro-crack propagation, reducing insert failures
- Enhanced adhesion strength between the coating and carbide substrate layer

High wear and fracture resistant carbide substrate for optimal grooving performance



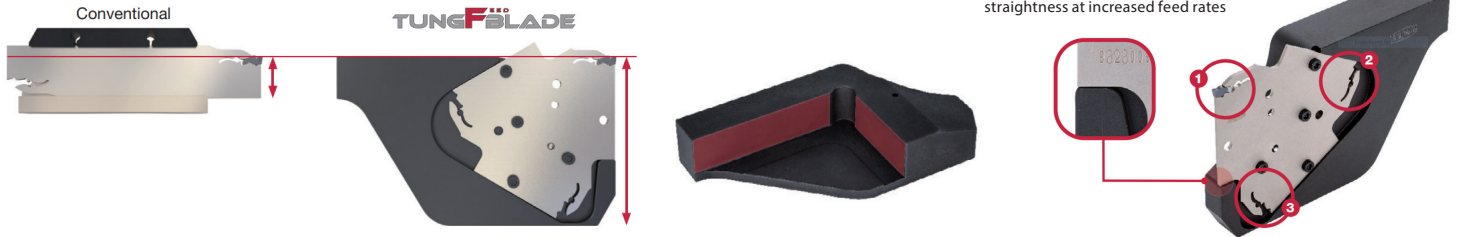


TUNGFEED BLADE THE ULTIMATE SOLUTION FOR HIGH FEED GROOVING AND PARTING-OFF

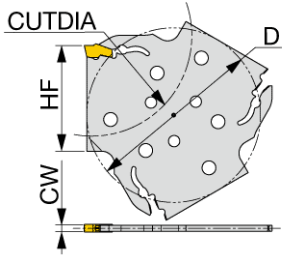
TungFeed-Blade now available for high productive deep grooving and parting operations

- With much thicker support than existing grooving blades, tool deflection and chatter are minimized even at higher feed rates

- The block is clamped by contacting two surfaces - A thick support beneath the insert allows the tool to produce grooves with high surface quality and straightness at increased feed rates



QSG Parting-off and external grooving blade



QSG52-*T : D= 48.3 mm
QSG82-*T : D= 69.3 mm
QSG120-*T: D= 88 mm

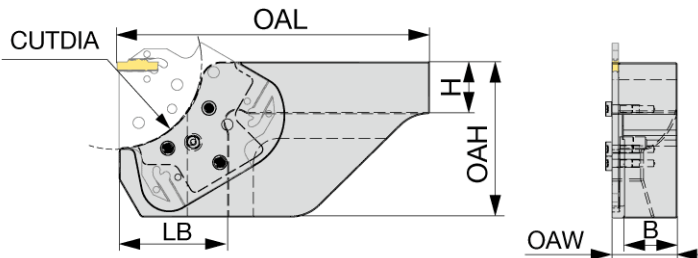
Introduction Deal
Buy 20 Inserts
Get **BLADE FREE**

Introduction Deal
Buy 10 Inserts
& Block Get
BLADE FREE

Designation	CW	CUTDIA	SSC	H F	INSERT	HOLDER	STANDARD PRICE	PRICE WITH INSERTS 20	PRICE WITH 10xINSERTS+BLOCK
QSG52-2T	2	52	2	27	QG_2	CHTBR/L...-52	£ 67.96	FREE	FREE
QSG82-2T	2	82	2	42	QG_2	CHTBR/L...-82	£ 73.85	FREE	FREE
QSG52-3T	3	52	3	27	QG_3	CHTBR/L...-52	£ 67.96	FREE	FREE
QSG82-3T	3	82	3	42	QG_3	CHTBR/L...-82	£ 73.85	FREE	FREE
QSG120-3T	3	120	3	61	QG_3	CHTBR/L...-120	£ 96.56	FREE	FREE
QSG52-4T	4	52	4	27	QG_4	CHTBR/L...-52	£ 67.96	FREE	FREE
QSG82-4T	4	82	4	42	QG_4	CHTBR/L...-82	£ 73.85	FREE	FREE
QSG120-4T	4	120	4	61	QG_4	CHTBR/L...-120	£ 96.56	FREE	FREE
QSG120-5T	5	120	5	61	QG_5	CHTBR/L...-120	£ 96.56	FREE	FREE



CHTBR/L Tool block for CHGP and QSG blades



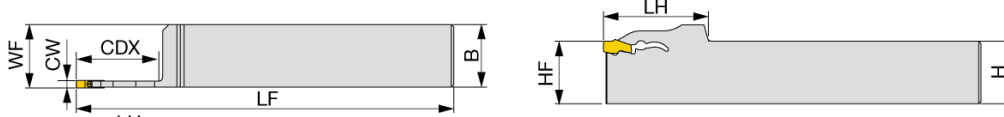
Designation	HAND	CUTDIA	OAH	H	B	OAW	OAL	L B	Blade	STANDARD PRICE
CHTBR/L2020-52	R/L	52	50	20	20.5	26.5	100	37	CHGP52-*T, QSG52-*T	£156.47
CHTBR/L2525-52	R/L	52	50	25	25.5	31.5	125	37	CHGP52-*T, QSG52-*T	£164.08
CHTBR/L2020-82	R/L	82	75	20	20.5	26.5	140	53	CHGP82-*T, QSG82-*T	£156.47
CHTBR/L2525-82	R/L	82	75	25	25.5	31.5	150	53	CHGP82-*T, QSG82-*T	£164.08
CHTBR/L2525-120	R/L	120	100	25	25.5	31.5	165	67	QSG120-*T	£189.46
CHTBR/L3232-120	R/L	120	100	32	32.5	38.5	165	67	QSG120-*T	£199.58



The blade clamping screw heads protrude out for as much as 3.1 mm over the insert cutting edge point. Maintain the clearance from the chucking device to avoid interference.



QSER/L External toolholder for grooving and parting

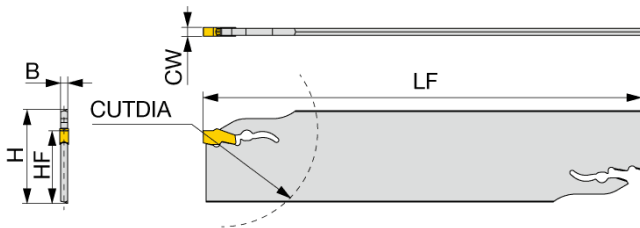


Designation	HAND	C W	CDX	SSC	H	B	LF	LH	H F	W F	INSERT	STANDARD PRICE	PRICE WITH 20 INSERTS
QSER/L2020-2T26	R/L	2	26	2	20	20	125	36	20	20.1	QG_2	£ 89.05	FREE
QSER/L2020-2T33	R/L	2	33	2	20	20	125	42	20	20.1	QG_2	£ 89.05	FREE
QSER/L2525-2T26	R/L	2	26	2	25	25	150	36	25	25.1	QG_2	£ 94.10	FREE
QSER/L2525-2T33	R/L	2	33	2	25	25	150	42	25	25.1	QG_2	£ 94.10	FREE
QSER/L2020-3T26	R/L	3	26	3	20	20	125	36	20	20.3	QG_3	£ 89.05	FREE
QSER/L2020-3T33	R/L	3	33	3	20	20	125	42	20	20.3	QG_3	£ 89.05	FREE
QSER/L2525-3T26	R/L	3	26	3	25	25	150	36	25	25.3	QG_3	£ 94.10	FREE
QSER/L2525-3T33	R/L	3	33	3	25	25	150	42	25	25.3	QG_3	£ 94.10	FREE
QSER/L2020-4T33	R/L	4	33	4	20	20	125	42	20	20.4	QG_4	£ 89.05	FREE
QSER/L2525-4T33	R/L	4	33	4	25	25	150	42	25	25.4	QG_4	£ 94.10	FREE
QSER/L2525-5T33	R/L	5	33	5	25	25	150	42	25	25.5	QG_5	£ 94.10	FREE

Introduction Deal
Buy 20 Inserts
Get **HOLDER FREE**



QSP Blade for external deep grooving and parting



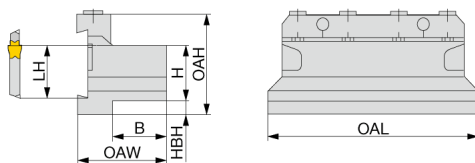
Introduction Deal
Buy 20 Inserts
Get **BLADE FREE**

Introduction Deal
Buy 10 Inserts
& Block Get
BLADE FREE

Designation	C W	CUTDIA	SSC	H	B	L F	H F	INSERT	STANDARD PRICE	PRICE WITH 20 INSERTS	PRICE WITH 10xINSERTS+BLOCK
QSP26-2D	2	50	2	26	1.8	150	21.4	QG_2	£ 76.99	FREE	FREE
QSP32-2D	2	66	2	32	1.8	150	24.8	QG_2	£ 83.94	FREE	FREE
QSP26-3D	3	75	3	26	2.4	150	21.4	QG_3	£ 76.99	FREE	FREE
QSP32-3D	3	120	3	32	2.4	150	24.8	QG_3	£ 83.94	FREE	FREE
QSP26-4D	4	80	4	26	3.2	150	21.4	QG_4	£ 76.99	FREE	FREE
QSP32-4D	4	120	4	32	3.2	150	24.9	QG_4	£ 83.94	FREE	FREE
QSP32-5D	5	120	5	32	4	150	24.9	QG_5	£ 83.94	FREE	FREE

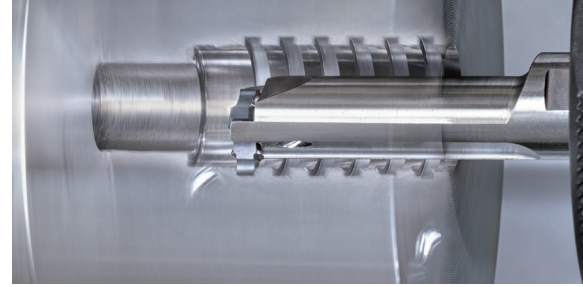


CTBU Tool block for CGP and QSP blades



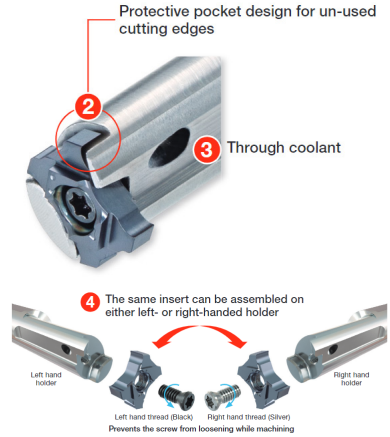
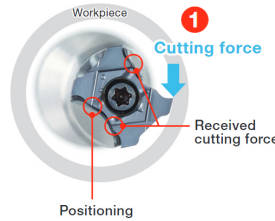
Designation	H	B	OAL	LH	HBH	OAH	OAW	STANDARD PRICE
CTBU20-26	20	21	86	21.4	9	43	38	£145.23
CTBU25-26	25	23	110	21.4	5	45	43	£152.36
CTBU20-32	20	19	100	24.8	13	50	38	£145.23
CTBU25-32	25	23	110	24.8	8	50	42	£152.36
CTBU32-32	32	29	110	24.8	5	54	48	£157.71





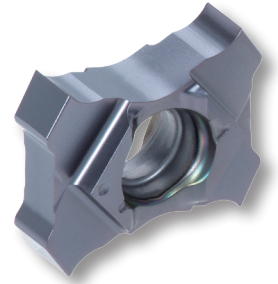
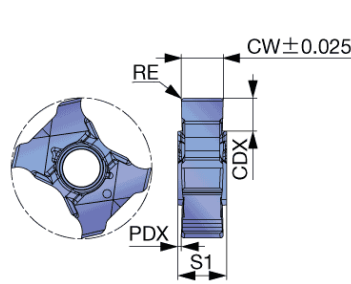
AN INDUSTRY FIRST! FOUR EDGED ID GROOVING INSERT FOR PRE HOLE $\varnothing 10.5$ MM AND LARGER

Unique clamp design provides maximum tool rigidity and true positioning of insert and high repeatability, ensuring high part quality.

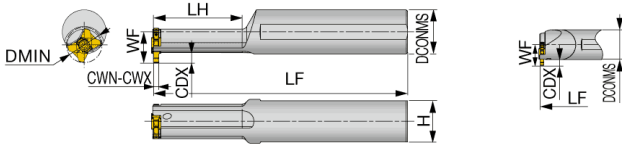


TCIG Grooving insert with 4 cutting edges

Designation	CW	RE	CDX	S1	PDX	PACK SIZE	OFFER PRICE PER INSERT
TCIG10-150-010 AH725	1.5	0.1	2	3.5	1	5	£ 15.40
TCIG10-200-010 AH725	2	0.1	2	3.5	0.75	5	£ 15.40
TCIG10-250-020 AH725	2.5	0.2	2	3.5	0.5	5	£ 15.40
TCIG10-300-020 AH725	3	0.2	2	3.5	0.25	5	£ 15.87
TCIG12-150-010 AH725	1.5	0.1	3	3.5	1	5	£ 17.72
TCIG12-200-020 AH725	2	0.2	3	3.5	0.75	5	£ 17.72
TCIG12-250-020 AH725	2.5	0.2	3	3.5	0.5	5	£ 17.72
TCIG12-300-020 AH725	3	0.2	3	3.5	0.25	5	£ 18.26



A/E-STCIR/L Internal grooving toolholder



Introduction Deal
Buy 10 Inserts
Get **STEEL** Holder
FREE

A*STCIR/L

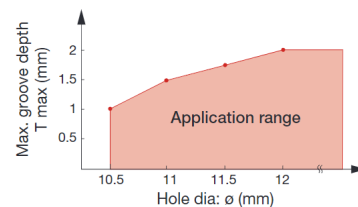
Introduction Deal
Buy 10 Inserts
Get **CARBIDE** Holder
Half Price

E*STCIR/L

Designation	HAND	MAT'L	CWN	CWX	DMIN	SSC	DCONMS	L F	L H	H	W F	INSERT	STANDARD PRICE	PRICE WITH 10 INSERTS
D105-A12H-STCIR10	R	Steel	1.5	3	10.5	10	12	100	25	11	8.3	...TCIG10	£117	FREE
D105-A12H-STCIL10	L	Steel	1.5	3	10.5	10	12	100	25	11	8.3	...TCIG10	£117	FREE
D120-A12H-STCIR10	R	Steel	1.5	3	12	10	12	100	31	11	8.3	...TCIG10	£117	FREE
D120-A12H-STCIL10	L	Steel	1.5	3	12	10	12	100	31	11	8.3	...TCIG10	£117	FREE
D150-E12K-STCIR10	R	Carbide	1.5	3	15	10	12	125	-	11	8.3	...TCIG10	£189	£94.50
D150-E12K-STCIL10	L	Carbide	1.5	3	15	10	12	125	-	11	8.3	...TCIG10	£189	£94.50
D130-A16J-STCIR12	R	Steel	1.5	3	13	12	16	110	33	15	11.3	...TCIG12	£129	FREE
D130-A16J-STCIL12	L	Steel	1.5	3	13	12	16	110	33	15	11.3	...TCIG12	£129	FREE
D160-A16J-STCIR12	R	Steel	1.5	3	16	12	16	110	41	15	11.3	...TCIG12	£129	FREE
D160-A16J-STCIL12	L	Steel	1.5	3	16	12	16	110	41	15	11.3	...TCIG12	£129	FREE
D200-E16M-STCIR12	R	Carbide	1.5	3	20	12	16	150	-	15	11.3	...TCIG12	£319	£159.50
D200-E16M-STCIL12	L	Carbide	1.5	3	20	12	16	150	-	15	11.3	...TCIG12	£319	£159.50

STANDARD CUTTING CONDITIONS

ISO	Workpiece material	Hardness	Priority	Cutting speed Vc (m/min)	Feed f (mm/rev)
P	Steels S45C, C45, SCM435, 34CrMo4, etc.	< 300 HB	First choice	50 - 180	0.02 - 0.08
M	Stainless steel SUS303, X10CrNiS18-9, etc.	< 200 HB	First choice	50 - 120	0.02 - 0.08
S	Titanium alloys Ti-6Al-4V, etc.	< HRC 40	First choice	20 - 80	0.02 - 0.08





6-CORNER CBN INSERT FOR MORE RELIABLE, ECONOMICAL AND PRODUCTIVE I.D. TURNING OF HARD PARTS

ADD double-sided CBN inserts with WavyJoint brazing technology for light cutting action of positive inserts

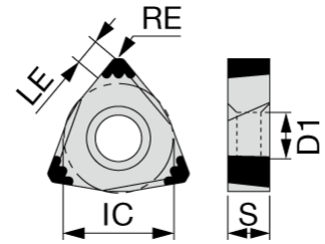
INSERT POSITIVE TYPE

P	Steel		
M	Stainless		
K	Cast iron		
N	Non-ferrous		
S	Superalloy		
H	Hard material	C	CL

C: Continuous cutting
L: Light interrupted cutting

Shape	Designation	Dimension (mm)		Edge prep.			Chipbreaker	Net Price Each Insert	Cost per CBN Corner (6 per Insert)										
		BXA10	BXA20	No. of corners	LE	RE				IC	S	D1	SP	L	LF				
	6QS-WXGQ040302SPR	●	●	6	1.8	0.2	6.35	3.18	2.7	○								£115.90	£19.32
	6QS-WXGQ040302SPL	●	●	6	1.8	0.2	6.35	3.18	2.7	○								£115.90	£19.32
	6QS-WXGQ040304SPR	●	●	6	1.8	0.4	6.35	3.18	2.7	○								£115.90	£19.32
	6QS-WXGQ040304SPL	●	●	6	1.8	0.4	6.35	3.18	2.7	○								£115.90	£19.32
	6QS-WXGQ040308SPR	●	●	6	1.7	0.8	6.35	3.18	2.7	○								£115.90	£19.32
	6QS-WXGQ040308SPL	●	●	6	1.7	0.8	6.35	3.18	2.7	○								£115.90	£19.32
	6QS-WXGU040304R-HP	●	●	6	1.8	0.4	6.35	3.18	2.7				○					£139.09	£23.18
	6QS-WXGU040304L-HP	●	●	6	1.8	0.4	6.35	3.18	2.7				○					£139.09	£23.18
	6QS-WXGU040308R-HP	●	●	6	1.7	0.8	6.35	3.18	2.7				○					£139.09	£23.18
	6QS-WXGU040308L-HP	●	●	6	1.7	0.8	6.35	3.18	2.7				○					£139.09	£23.18

Introduction Deal
Buy 5 Inserts
Get Steel or Carbide Bar
FREE



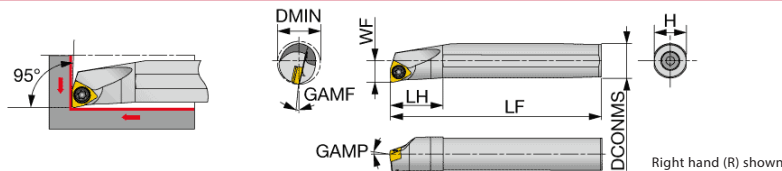
STANDARD CUTTING CONDITIONS

ISO	Grade	Edge preparation	Workpiece condition	Cutting speed Vc (m/min)	Depth of cut ap (mm)	Feed f (mm/rev)
H	BXA10	No symbol	Continuous	100 - 230	0.05 - 0.5	0.03 - 0.3
			Light interrupted	100 - 230	0.05 - 0.5	0.03 - 0.2
	BXA20	-HP	Continuous	100 - 230	0.05 - 0.2	0.03 - 0.2
			Interrupted	60 - 180	0.05 - 0.5	0.03 - 0.2
		No symbol	Continuous	60 - 180	0.05 - 0.5	0.03 - 0.3
			Interrupted	60 - 180	0.05 - 0.5	0.03 - 0.2
	-HP	Continuous	60 - 180	0.05 - 0.2	0.03 - 0.2	



TOOLHOLDERS

A/E-SWLXR/L For trigon insert with 6 edges



Designation	HAND	Material	DMIN	DCONMS	WF	LF	LH	H	GAMP	GAMF	RE**	Insert	STANDARD PRICE	PRICE WITH 5 INSERTS
A10K-SWLXR/L04-D120	R/L	Steel	12	10	6	125	20	9	-10	-16	0.4	WXGU0403**L/R (...)	£78.65	FREE
A12M-SWLXR/L04-D140	R/L	Steel	14	12	7	150	24	11	-10	-14	0.4	WXGU0403**L/R (...)	£78.86	FREE
A16Q-SWLXR/L04-D180	R/L	Steel	18	16	9	180	32	15	-10	-11	0.4	WXGU0403**L/R (...)	£82.16	FREE
A20R-SWLXR/L04-D220	R/L	Steel	22	20	11	200	36	18	-10	-10	0.4	WXGU0403**L/R (...)	£105.37	FREE
E10M-SWLXR/L04-D120	R/L	Carbide	12	10	6	150	25	9	-10	-16	0.4	WXGU0403**L/R (...)	£195.85	FREE
E12Q-SWLXR/L04-D140	R/L	Carbide	14	12	7	180	27	11	-10	-14	0.4	WXGU0403**L/R (...)	£237.07	FREE
E16R-SWLXR/L04-D180	R/L	Carbide	18	16	9	200	32	15	-10	-11	0.4	WXGU0403**L/R (...)	£324.90	FREE
E20S-SWLXR/L04-D220	R/L	Carbide	22	20	11	250	36	18	-10	-10	0.4	WXGU0403**L/R (...)	£469.26	FREE

Recommended torque 0.9 N-m for clamping **RE: The holder measurements are true with this insert radius
Note: Use the right hand toolholder (R) for the left hand insert (L). Use the left hand toolholder (L) for the right hand insert (R)





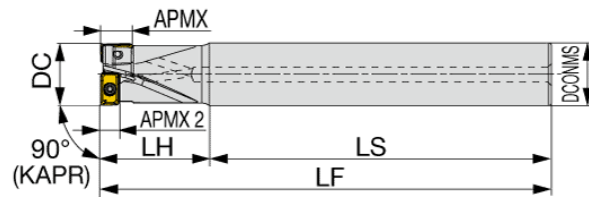
ALL-ROUND CUTTER WITH CENTER CUTTING CAPABILITY FOR ULTIMATE MACHINING VERSATILITY — FROM SHOULDER MILLING TO HOLE MAKING

Introduction Deal
Buy 20 Inserts
Get Body FREE

A single insert has cutting edges for both bottom and peripheral surfaces.
Four total cutting edges for better cost per insert

CUTTERS

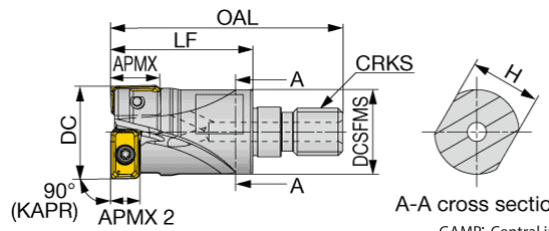
EVLX08/10/12 Multi-function endmill, shank type, with center cutting edge



GAMP: Central insert -2.6° ~ -4.4°, Peripheral insert +6.1° ~ +7.1°
GAMF: Central insert +0.2° ~ +1.3°, Peripheral insert 15.7° ~ -15°

Designation	APMX	APMX 2	DC	CICT	DCONMS	LS	LH	LF	Inserts	STANDARD PRICE	PRICE WITH 20 INSERTS
EVLX08M016C16.0R02	7	4	16	2	16	100	30	130	...LXMU08	£199	FREE
EVLX08M016C16.0R02L	7	4	16	2	16	130	50	180	...LXMU08	£203	FREE
EVLX08M017C16.0R02L	7	4	17	2	16	155	25	180	...LXMU08	£203	FREE
EVLX10M020C20.0R02	9	4	20	2	20	110	35	145	...LXMU10	£221	FREE
EVLX10M020C20.0R02L	9	4	20	2	20	130	60	190	...LXMU10	£225	FREE
EVLX10M021C20.0R02L	9	4	21	2	20	160	30	190	...LXMU10	£225	FREE
EVLX12M025C25.0R02	11	6	25	2	25	105	45	150	...LXMU12	£229	FREE
EVLX12M025C25.0R02L	11	6	25	2	25	150	75	225	...LXMU12	£234	FREE
EVLX12M026C25.0R02L	11	6	26	2	25	190	35	225	...LXMU12	£234	FREE

HVLX08/10/12-M Multi-function endmill, modular type (TungFlex), with center cutting edge

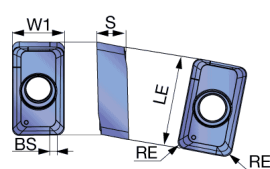


GAMP: Central insert -2.6° ~ -4.4°, Peripheral insert +6.1° ~ +7.1°
GAMF: Central insert +0.2° ~ +1.3°, Peripheral insert 15.7° ~ -15°

Designation	APMX	APMX 2	DC	CICT	OAL	LF	H	DCSFMS	CRKS	Inserts	STANDARD PRICE	PRICE WITH 20 INSERTS
HVLX08M016M08R02	7	4	16	2	42	25	10	14.5	M8	LXMU08...	£199	FREE
HVLX10M020M10R02	9	4	20	2	49	30	15	17.8	M10	LXMU10...	£221	FREE
HVLX12M025M12R02	11	6	25	2	57	35	17	23	M12	LXMU12...	£229	FREE

INSERT

LXMU-MM



Grades
- AH3225: Superior resistance to wear and fracture, ideal for steel and stainless steel
- AH8015: Wear-resistant grade ideal for hardened steel and cast iron
- AH120: Excellent edge chipping resistance, suited for cast iron
Chipbreaker
- MM type: Versatile geometry for low cutting forces

Grade	Star	Circle
P Steel	★	☆
M Stainless	★	
K Cast iron		★
N Non-ferrous		
S Superalloys	☆	★
H Hard materials		★

Designation	RE	APMX	AH3225	AH120	AH8015	Net Price Each
LXMU080304PER-MM	0.4	7	•	•	•	£12.61
LXMU10T308PER-MM	0.8	9	•	•	•	£14.32
LXMU120408PER-MM	0.8	11	•	•	•	£15.71





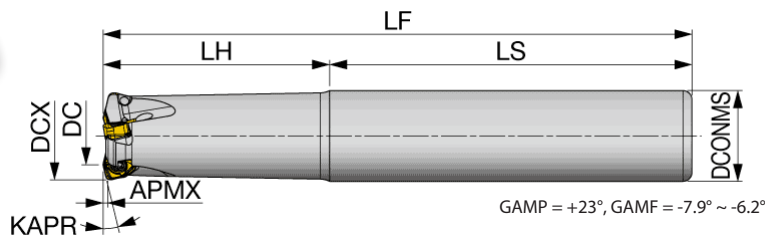
HIGH PERFORMANCE AND PROFITABILITY IN HIGH-FEED MILLING OPERATIONS

- The cutter features a small approach angle, providing smooth access into the material, making it an ideal tool for long overhang setups.
- Steep ramping capability makes the cutter ideal for pocketing and cavity milling applications.
- Large effective cutter diameter leaves less uncut material.

Introduction Deal
Buy 10 Inserts
per Pocket
Get Body FREE
Max of 50 inserts

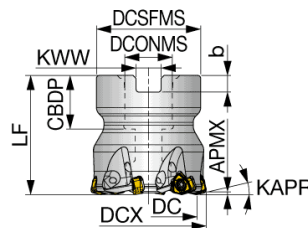
CUTTERS

EXWX03 High feed endmill, shank type, with screw clamp system, for 6-corner double sided inserts



Designation	APMX	DCX	Z	DC	DCONMS	LS	LH	LF	KAPR	STANDARD PRICE	#Inserts for FREE
EXWX03M016C16.0R02	1	16	2	8.9	16	70	30	100	°12	£190	20
EXWX03M016C16.0R02L	1	16	2	8.9	16	100	50	150	°12	£193	20
EXWX03M020C20.0R03	1	20	3	12.8	20	80	50	130	°12	£237	30
EXWX03M020C20.0R03L	1	20	3	12.8	20	80	80	160	°12	£242	30
EXWX03M025C25.0R04	1	25	4	17.8	25	80	60	140	°12	£275	40
EXWX03M025C25.0R04L	1	25	4	17.8	25	80	100	180	°12	£280	40
EXWX03M032C32.0R05	1	32	5	24.7	32	80	70	150	°12	£294	50
EXWX03M032C32.0R05L	1	32	5	24.7	32	80	120	200	°12	£300	50

TXWX03 High feed mill, with screw clamp system, for 6-corner double sided inserts

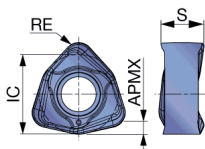
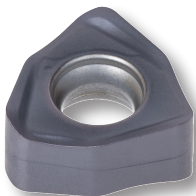


GAMP = +23°, GAMF = -6.2° ~ -6.1°

Designation	APMX	DCX	Z	DC	DCSFMS	DCONMS	CBDP	LF	b	KWW	KAPR	STANDARD PRICE	#Inserts for FREE
TXWX03M040B16.0R06	1	40	6	32.7	35	16	18	40	5.6	8.4	°12	£332	50
TXWX03M050B22.0R08	1	50	8	42.7	47	22	20	50	6.3	10.4	°12	£382	50

INSERT

WXMU0303-MM



Double-sided 6-edged insert

Grades

- AH3225: Provides superior resistance to wear and fracture, ideal for steel and stainless steel
- AH8015: Wear resistant grade, suited for hardened hardened steel and cast iron and cast iron

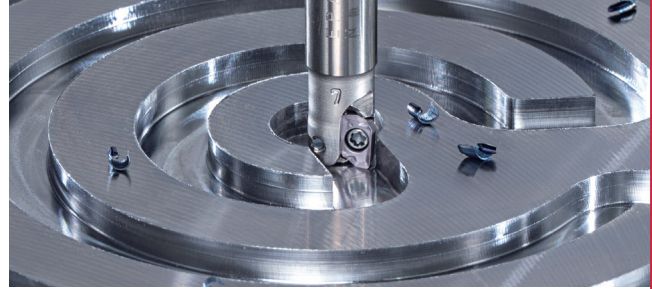
Chipbreaker

- MM type: Versatile geometry for low cutting forces

Grade	Material	AH3225	AH8015
P	Steel	★	☆
M	Stainless	★	★
K	Cast iron	☆	★
N	Non-ferrous	☆	☆
S	Superalloy	☆	★
H	Hard materials	☆	★

Designation	RE	APMX	AH3225	AH8015	Net Price Each
WXMU0303ZER-MM	1.2	1	•	•	£11.34





NEW SIZE -04 INSERTS FOR ENHANCED SHOULDER MILLING CAPABILITY

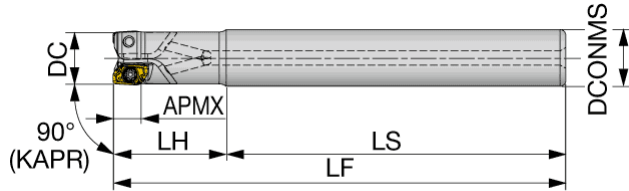
The unique V-bottom shape inserts enables the cutter body to have a thicker core size and insert backing for higher tool rigidity.

- Size-04 inserts can be used for minimum cutter diameters from 6 mm.- Large chip pockets for excellent chip evacuation.
- Light cutting action with high edge-line security thanks to large rake angle and strong cutting edge design.

Introduction Deal
Buy 10 Inserts
per Pocket
Get Body FREE

CUTTER

EPAV04 High-end square shoulder endmill, with screw clamp system



GAMP = +6.0°~+7.6°, GAMF = -37.1°~-32.4°

Designation	APMX	DC	Z	DCONMS	LS	LH	LF	STANDARD PRICE	#Inserts for FREE
EPAV04M006C06.0R01	4	6	1	6	48	12	60	£132	10
EPAV04M008C08.0R02	4	8	2	8	48	12	60	£149	20
EPAV04M008C08.0R02L	4	8	2	8	60	20	80	£152	20
EPAV04M010C10.0R02	4	10	2	10	60	20	80	£157	20
EPAV04M010C10.0R03	4	10	3	10	60	20	80	£168	30
EPAV04M010C10.0R02L	4	10	2	10	65	35	100	£160	20
EPAV04M012C12.0R03	4	12	3	12	60	20	80	£165	30
EPAV04M012C12.0R04	4	12	4	12	60	20	80	£176	40
EPAV04M012C12.0R03L	4	12	3	12	85	35	120	£168	30
EPAV04M016C16.0R04	4	16	4	16	70	20	90	£179	40
EPAV04M016C16.0R05	4	16	5	16	70	20	90	£192	50
EPAV04M016C16.0R04L	4	16	4	16	105	35	140	£183	40

INSERT

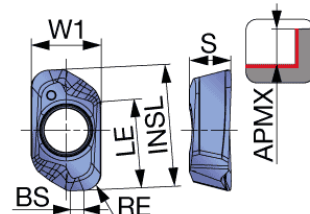
AVMT04-MM

- Grades
- AH3225: Superior resistance to wear and fracture, ideal for steel and stainless steel
 - AH120: Excellent edge chipping resistance, suited for cast iron

P	Steel	☆	★
M	Stainless	☆	★
K	Cast iron	★	
N	Non-ferrous		
S	Superalloys	★	☆
H	Hard materials	★	

- Chipbreakers
- MM type: Versatile geometry for low cutting forces

Designation	RE	APMX	AH3225	AH120	Net Price Each
AVMT040204PPER-MM	0.4	4	•	•	£5.97
AVMT040208PPER-MM	0.8	4	•	•	£5.97





TUNGALOY
ADD FORCE
ACCELERATED LINES

Request your
176 page
Catalogue

- GROOVING
- PARTING-OFF
- TURNING
- MILLING
- HOLEMAKING

Tungaloy UK Limited

Gallan Park, A5 Watling Street
Cannock, Staffordshire, WS11 0XG

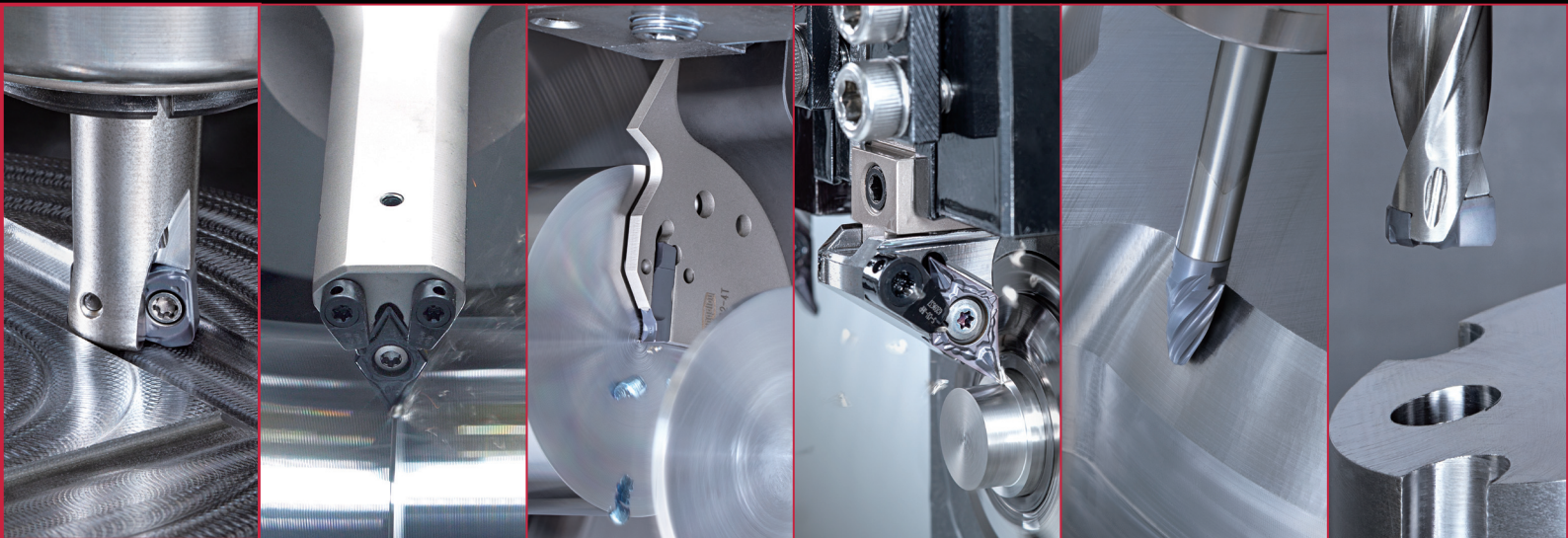
Phone: 0121 400 0231

Email: salesinfo@tungaloyuk.co.uk



we improve...
we evolve...
we ADD

Tungaloy Accelerated Lines - Leading in Innovation



Member IMC Group
Tungaloy
INDUSTRY 4.0

www.tungaloy.com/uk



Tungaloy UK Limited

Gallan Park, Watling Street,
Cannock, WS11 0XG

T: 0121 400 0231

E: salesinfo@tungaloyuk.co.uk

www.tungaloy.com/uk

Engineering Support Available

- Onsite and Remote Engineering Support
- Product Recommendation & Application
- Cost Per Part & Process Improvement
- New Machine Tooling Packages
- Full Turnkey Solutions



Turn



Groove



Mill



Drill



Toolhold

Follow us:

Twitter & Facebook: @TungaloyUK

www.linkedin.com/company/tungaloy-uk

www.youtube.com - search "Tungaloy UK"

