



we improve...
we evolve...
we **ADD**



ADDFORCE PROMOTION



Valid from 1 October, 2021 to 31 March, 2022

www.tungaloy.com/uk | salesinfo@tungaloyuk.co.uk | T: 0121 400 0231

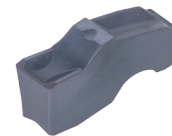
Valid from 1 October, 2021 to 31 March, 2022

EXCELLENT STABILITY FOR DEEP GROOVING AND PARTING-OFF DUE TO UNIQUE INSERT CLAMP

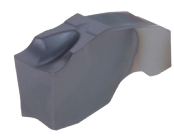
Newly developed clamping system provides higher tool rigidity, increased stability and reliability for deep grooving and parting-off.

BUY 20 inserts
AND
GET 1 blade OR holder

FREE
of charge!



QGM
The first choice chipbreaker for grooving and parting-off



QGS
Sharp cutting edge for lower cutting force

BUY 10 inserts
AND **1** block

AND
GET 1 blade OR holder

FREE
of charge!



QSER...



QSP...

Insert:
QGM..., QGS... (AH7025)
CW = 2 ~ 5 mm

Toolholder, Blade:
QSER... (Holder)
H = 20 / 25 mm
QSP... (Blade)
H = 26 / 32 mm
CTBU... (Block)
H = 20 / 25 / 32 mm



CTBU...



Valid from 1 October, 2021 to 31 March, 2022

AN INDUSTRY FIRST! FOUR EDGED ID GROOVING INSERT FOR PRE HOLE \varnothing 10.5 MM AND LARGER

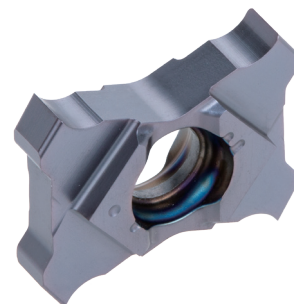
Unique clamp design provides maximum tool rigidity and true positioning of insert and high repeatability, ensuring high part quality.

BUY **10** inserts

AND

GET **1** steel shank holder

FREE
of charge!



BUY **10** inserts

AND

GET **1** carbide shank holder at

50 %
secondary discount!

TCIG10
Low cutting force chip breaker prevents vibration and provides fine surface finish

Insert:

TCIG10... (AH725)

CW = 1.5 ~ 2.5 mm

Toolholder:

A*STCIR/L (Steel shank)

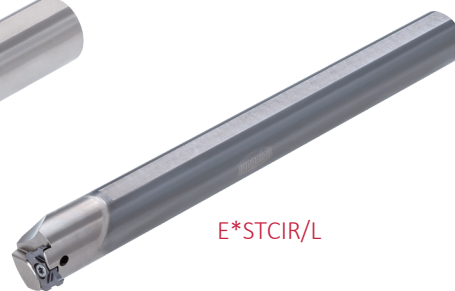
DCONMS = \varnothing 12 mm

E*STCIR/L (Carbide shank)

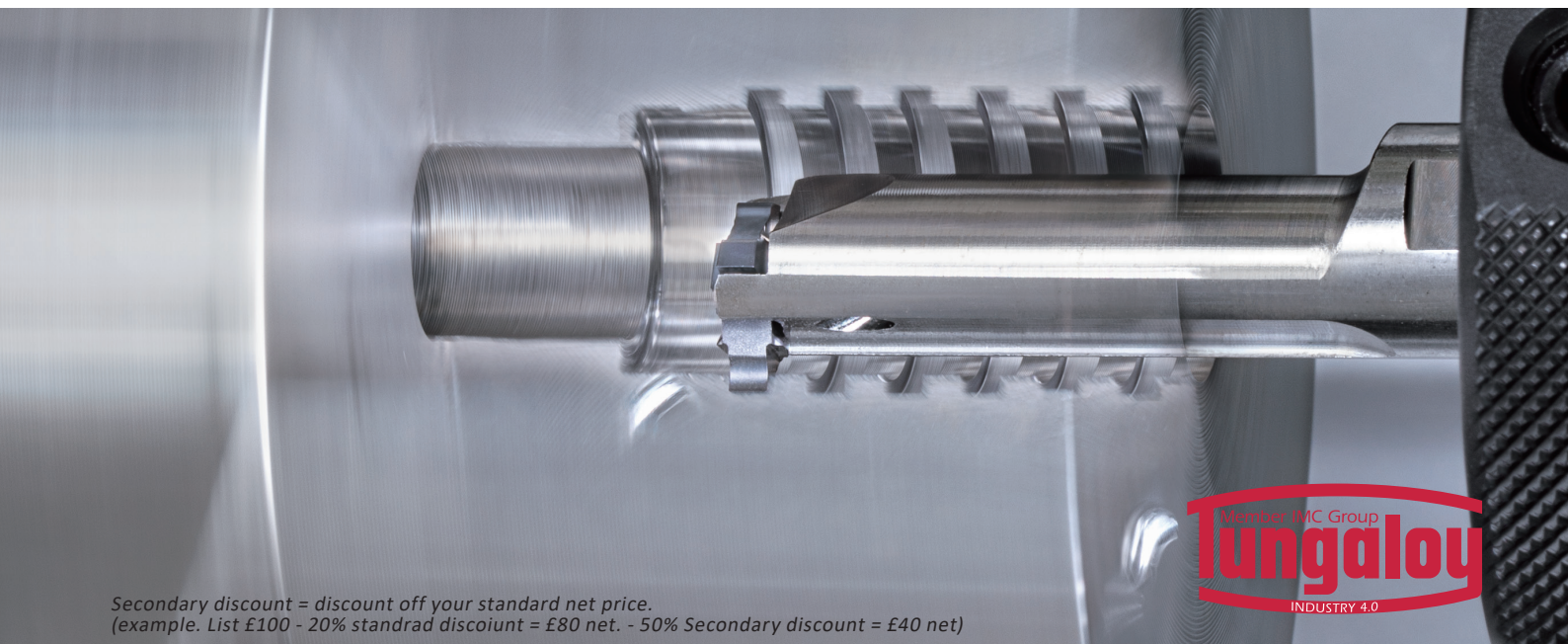
DCONMS = \varnothing 12 mm



A*STCIR/L



E*STCIR/L



Valid from 1 October, 2021 to 31 March, 2022

TCF18 INSERTS AND HOLDERS FOR SMALL-DIAMETER FACE GROOVING

Face grooving insert for $\phi 6$ mm minimum groove diameter

BUY **10** inserts

AND

GET **1** holder at

60 %
secondary
discount!

BUY **10** inserts

AND

GET **1** CHP holder at

40 %
secondary
discount!

Insert:

TCF18L... (SH725)

CW = 0.5 ~ 2.5 mm

Toolholder:

JS**-STCFL18

DCONMS = $\phi 16 \sim \phi 25.4$ mm

STCFVR**18

H = 10 / 12 / 16 mm

STCL**18

H = 10 / 12 / 16 / 20 / 25 mm

STCL**18-CHP

H = 20 / 25 mm



TCF18L...

Sharp cutting edge and insert clamping rigidity provide superior surface finish.



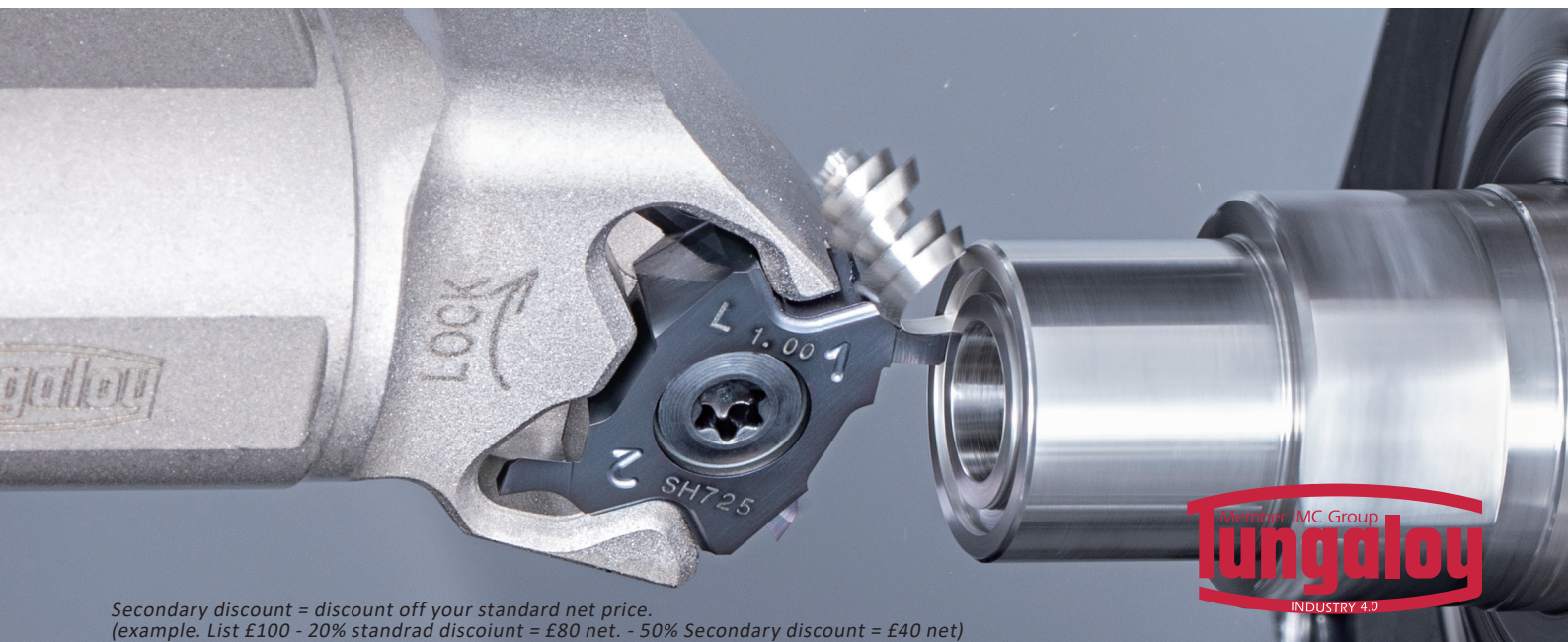
JS**-STCFL18



STCFVR**18



STCL**18-CHP



Valid from 1 October, 2021 to 31 March, 2022

COST-EFFICIENT GROOVING AND PARTING TOOL SERIES NOW OFFERS TCL38 INSERT FOR **UP TO 10 MM GROOVE DEPTH**

Multi-purpose grooving insert with economical 4-cutting edges

BUY 10 inserts

AND

GET 1 holder at

60 %
secondary
discount!

BUY 10 inserts

AND

GET 1 CHP holder at

40 %
secondary
discount!

Insert:

TCL38... (AH7025)

CW = 1.5 ~ 4 mm

Toolholder:

STCR/L**38...

H = 20 / 25 / 32 mm

STCR/L**38-CHP

H = 25 mm



TCL38...

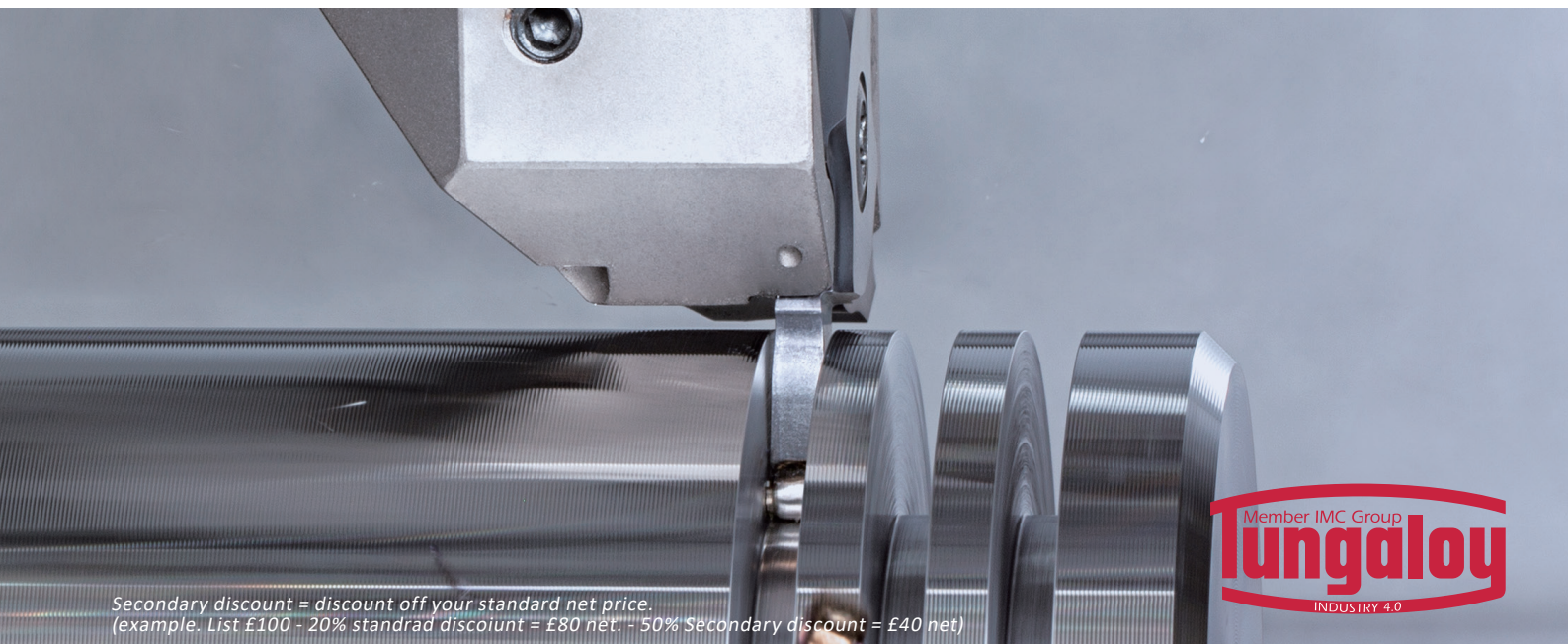
Provides sharp cutting edge and low cutting force that eliminate burr formation and chatter.



STCR/L38...**



STCR/L38-CHP...**



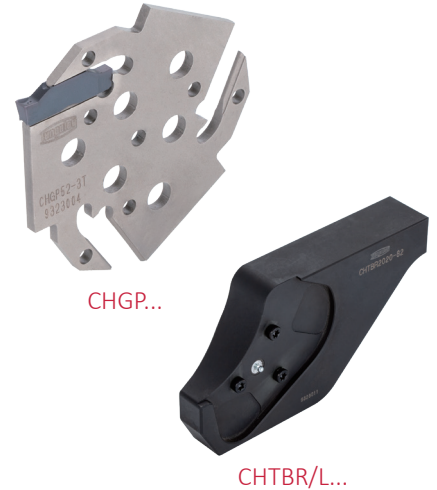
Secondary discount = discount off your standard net price.
(example. List £100 - 20% standrad discount = £80 net. - 50% Secondary discount = £40 net)

Valid from 1 October, 2021 to 31 March, 2022

THE ULTIMATE SOLUTION FOR *HIGH FEED GROOVING AND PARTING-OFF*

Strong holder design ensures excellent stability and productivity during demanding applications.

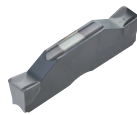
<p>BUY 20 inserts AND GET 1 blade</p>	<p>FREE of charge!</p>
<p>BUY 10 inserts AND 1 block AND GET 1 blade</p>	<p>FREE of charge!</p>



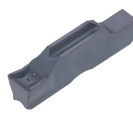
Insert:
DGM..., SGM..., DGS..., SGS..., DGL...
(AH7025)
CW = 2 ~ 4 mm

Blade:
CHGP...
CUTDIA = $\varnothing 52 / \varnothing 82$ mm

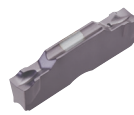
Block:
CHTBR/L...
H = 20 / 25 mm



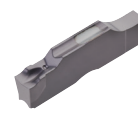
DGM...
(Two cornered type)



SGM...
(One cornered type)



DGS...
(Two cornered type)



SGS...
(One cornered type)



DGL...
Specially designed chipbreaker for machining of gummy material

The first choice for grooving and parting-off. Smooth chip evacuation well-designed edge with high strength

Lower cutting force with extremely sharp cutting edge



AH6225

Valid from 1 October, 2021 to 31 March, 2022



SUPERIOR CRATER WEAR RESISTANCE ELIMINATES BUILT UP EDGE

AH6225 for stainless steel machining provides improved machining performance and efficiency in a wide application range.

BUY **40** inserts

AND

GET **10** inserts

FREE
of charge!

Insert:

Negative type

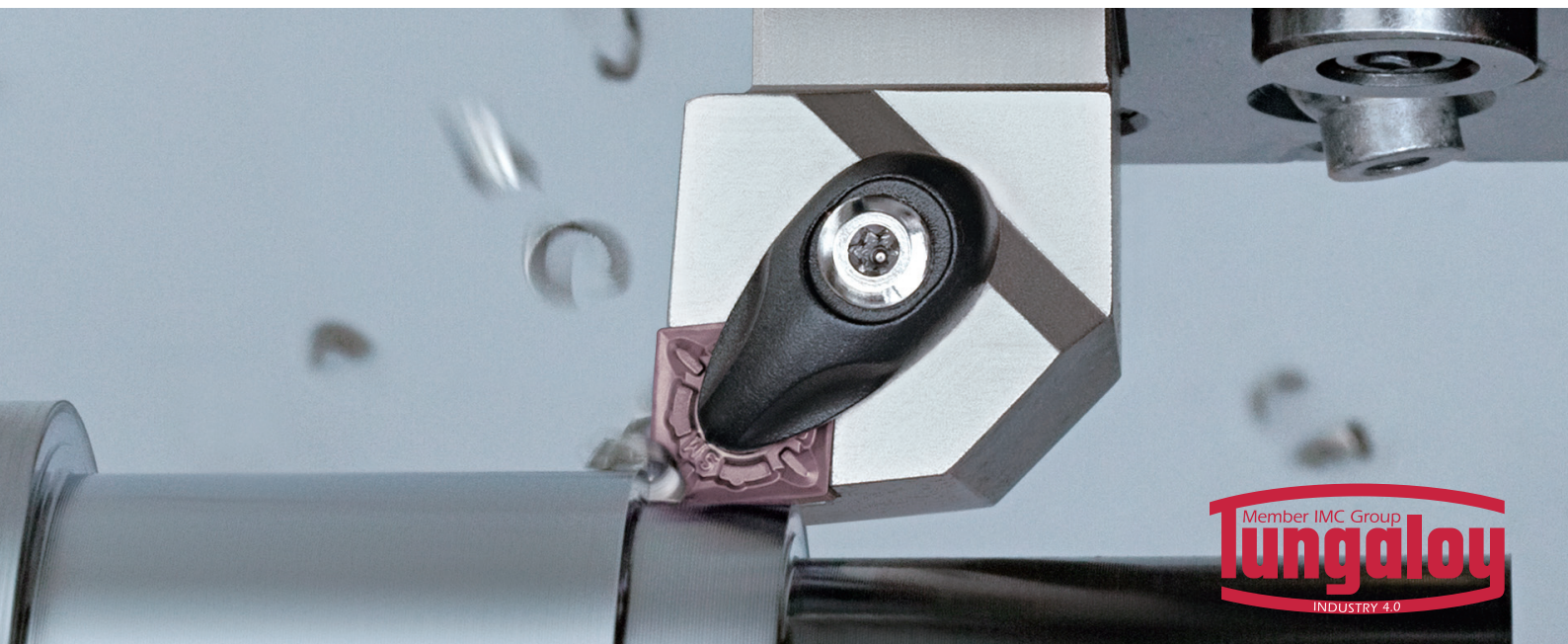
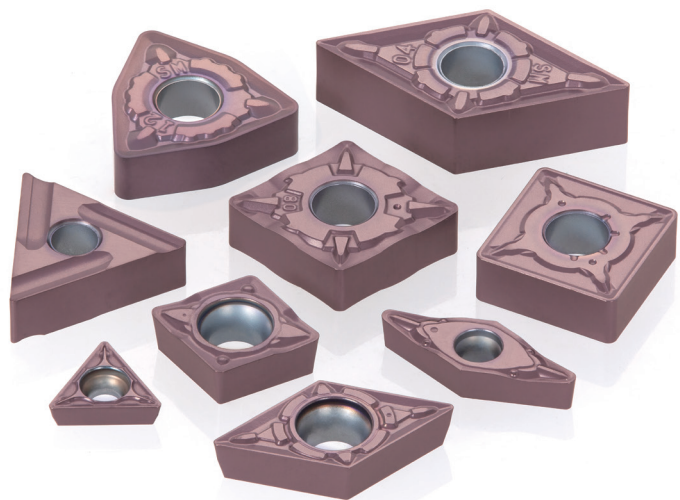
CNMG..., DNMG..., SNMG..., TNMG...,

VNMG..., WNMG...

Positive type

CCMT..., CPMT..., DCMT..., SCMT..., TCMT...,

TPMT..., VBMT..., VCMT...



Valid from 1 October, 2021 to 31 March, 2022

DOUBLE-SIDED POSITIVE INSERT WITH SHARP CUTTING EDGE CAN BE USED ON COOLANT THROUGH TOOLHOLDERS

Optimized two streams of coolant jets to maximize productivity

BUY **20** inserts

AND

GET **1** CHP holder at

40 %
secondary
discount!

Insert:

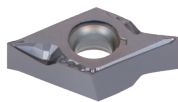
DXGU..., DXMU..., VXGU..., WXGU...

Grade: AH725, AH8015, GT9530, NS9530,
SH725, T9215, T9225, KS05F

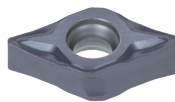
Toolholder:

JS**-CHP

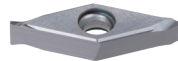
H = 10 / 12 / 16 mm



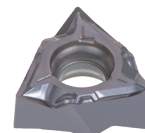
DXGU...
Double sided
55deg rhombic
inserts



DXMU...
Double sided 55
deg rhombic M
class insert



VXGU...
Double sided
35deg rhombic
inserts



WXGU...
Double sided
80deg trigon
inserts



Secondary discount = discount off your standard net price.
(example. List £100 - 20% standrad disoiunt = £80 net. - 50% Secondary discount = £40 net)

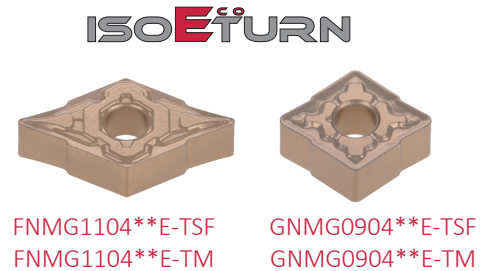
NEW GNMG AND FNMG GEOMETRIES PROVIDE EXCELLENT CHIP CONTROL AND CHIP EVACUATION

Small-sized turning inserts for best production economy with low cost per edge

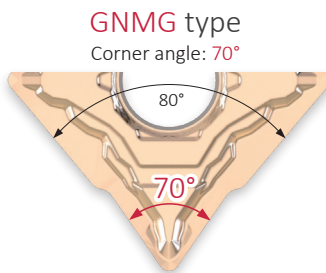
BUY 40 inserts
AND
GET 10 inserts

FREE of charge!

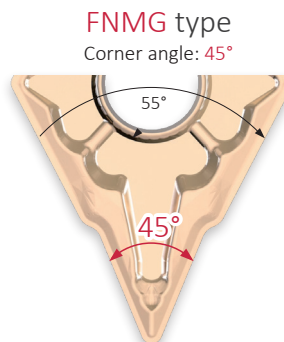
Insert:
FNMG... (45°), GNMG... (70°), YNMG... (25°)
Grade: T9215, T9225, T9235, NS9530, GT9530, AH8015



YNMG1604**-ZF
YNMG1604**-ZM



GNMG0904 insert with 70° corners:
good alternative to CNMG with 80° corners



FNMG1104 insert with 45° corners: good alternative to DNMG with 55° corners



Valid from 1 October, 2021 to 31 March, 2022

PS AND PM CHIPBREAKERS ARE NOW AVAILABLE ON NEGATIVE INSERTS FOR STEEL TURNING

New PS and PM chipbreakers complement the current TSF and TM. For improved crater wear resistance and chip control during turning at light cutting depths or at high feed rates.

BUY **40** inserts

AND

GET **10** inserts

FREE
of charge!

Insert:

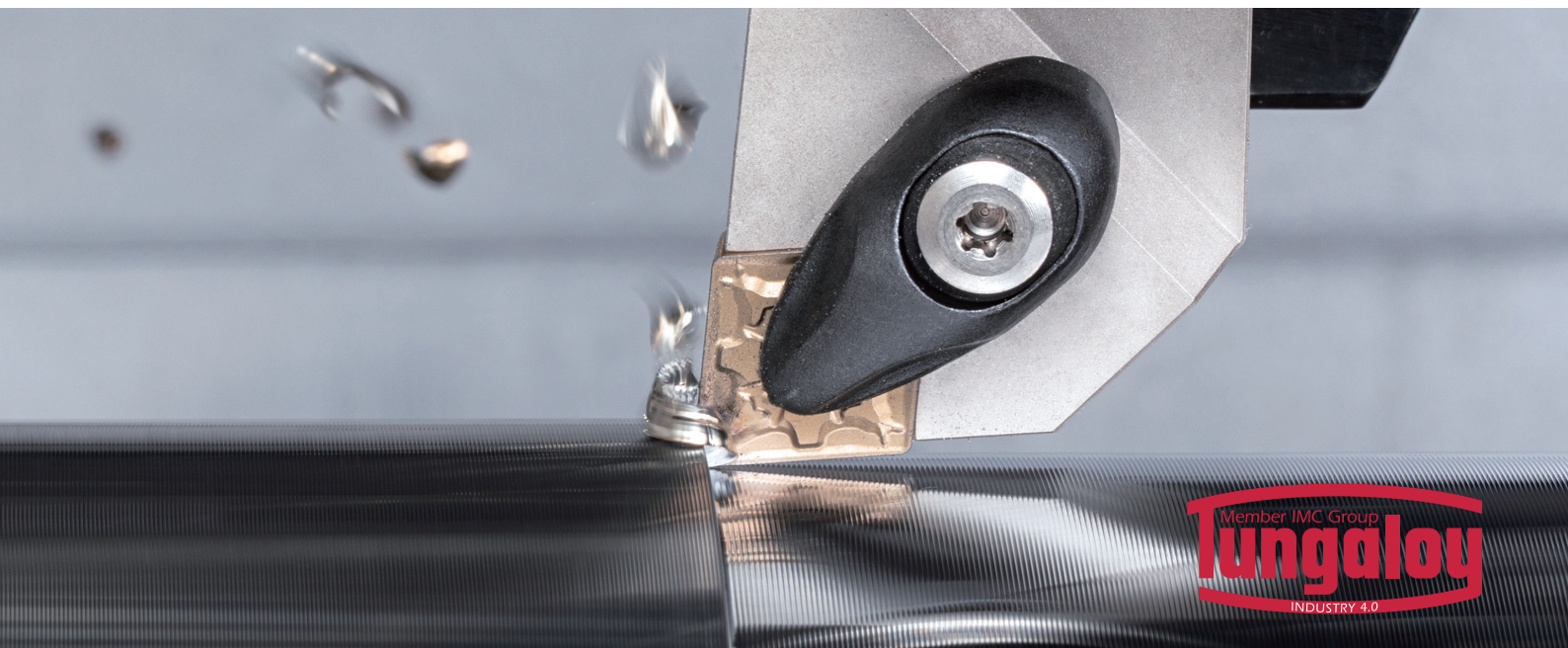
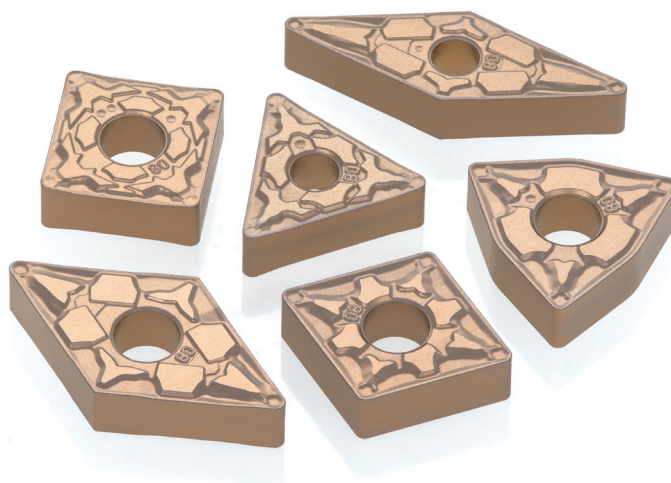
Chipbreaker: PS, PM

Negative type

CNMG..., DNMG..., SNMG..., TNMG...,

VNMG..., WNMG...

Grade: T9215, T9225



SMALL DIAMETER HIGH FEED MILLING SOLUTION

Highly successful DoFeed series now available in smaller 8 mm diameter milling cutter.
AddDoFeed double sided negative insert features a large rake angle with optimal inclination that allows good chip control and smooth chip evacuation.

BUY **10** inserts per pocket

AND

GET **1** cutter

FREE
of charge!

Minimum purchase of 20, Maximum purchase of 50 inserts

Insert:

LNMU02-MM (AH3225, AH8015, AH130)

Max. ap = 0.5 mm

Shank type:

EXN02R... (Short type)

EXN02R**L (Long type)

DCX = \varnothing 8- \varnothing 25 mm

Modular type:

HXN02R...

DCX = \varnothing 8- \varnothing 25 mm



LNMU02-MM

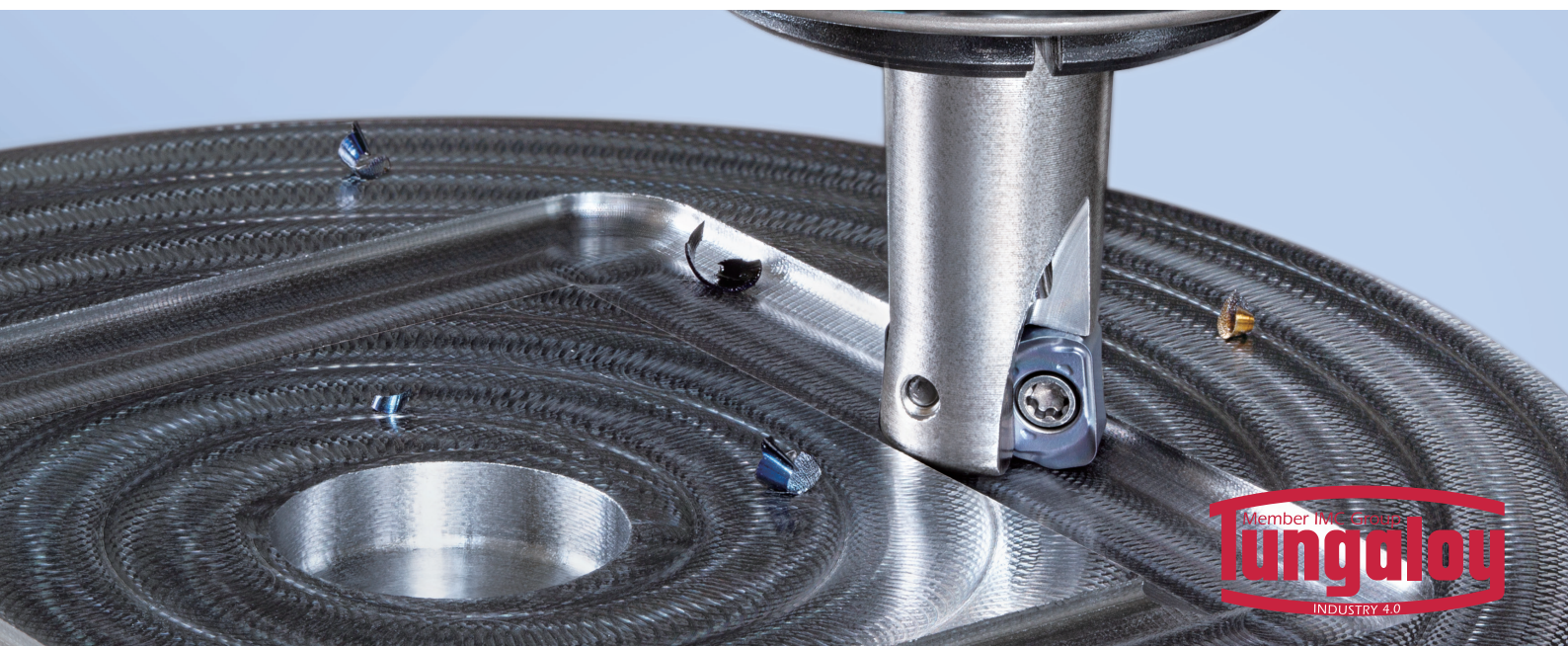
Double-sided insert with 4 cutting edges



EXN02R...
EXN02R**L



HXN02R...



EXTREMELY COST-EFFICIENT SHOULDER MILL SERIES UNVEILS CUTTERS *IN SMALLER DIAMETERS THAN EVER BEFORE*

Tung-Tri 04 boasts an innovative insert geometry, featuring a super high rake for a small diameter cutter, which significantly reduces cutting forces while eliminating chatter and edge chipping.

BUY **10** inserts per pocket

AND

GET **1** cutter

FREE
of charge!

Minimum purchase of 20, Maximum purchase of 50 inserts

Insert:

TOMT04-MM (AH3225, AH8015, AH120)

Max.ap = 3.5 mm

RE = 0.4, 0.8 mm

Shank type:

EPA04R... (Short type)

DC = $\varnothing 8 \sim \varnothing 25$ mm

EPA04R**L (Long type)

DC = $\varnothing 10 \sim \varnothing 25$ mm

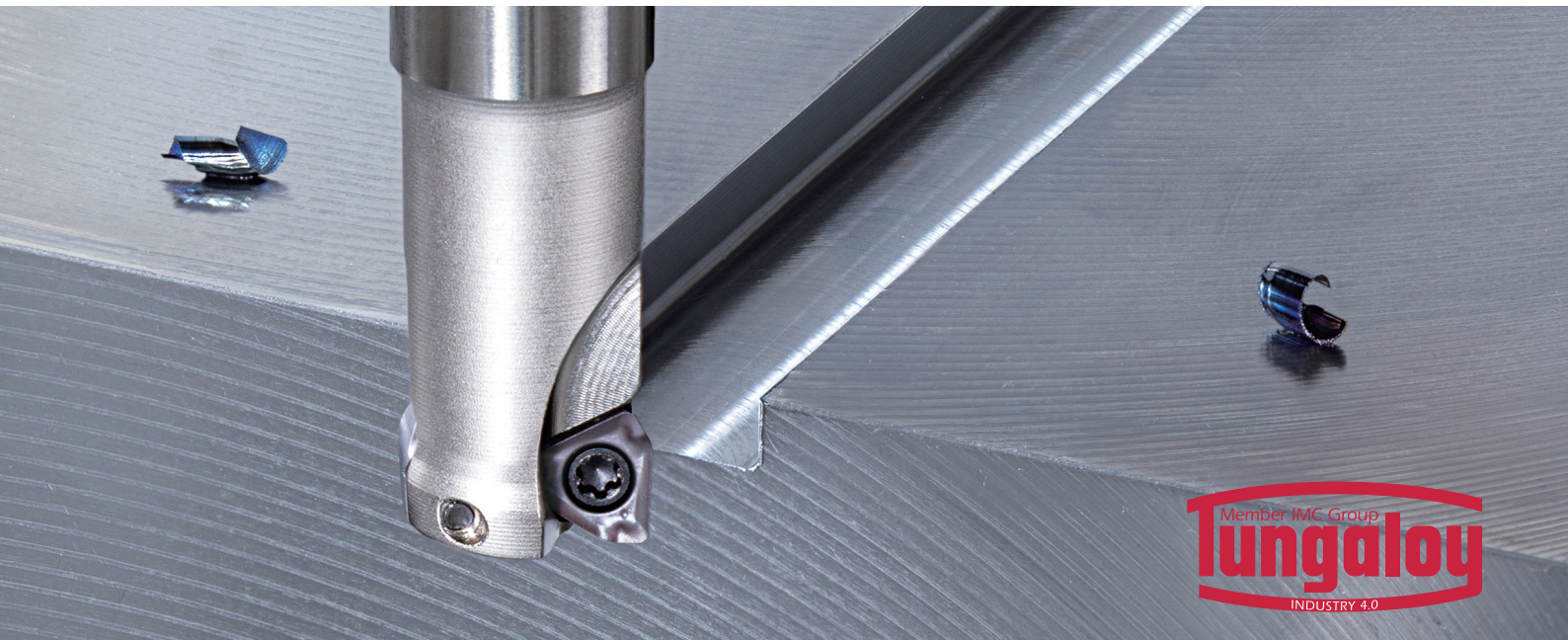


TOMT04-MM

Single-sided,
3 cornered
insert with MM
chipbreaker



EPA04...



VERSATILE SHOULDER MILLING CUTTER SERIES NOW OFFERS **SIZE 12 INSERT WITH UNIQUE V-SHAPED BOTTOM** FOR MAXIMUM PRODUCTIVITY

The use of unique V shaped bottom inserts enables the cutter to have higher tool rigidity and carry a greater number of inserts compared with conventional indexable shoulder milling cutters.

BUY 10 inserts per pocket

AND

GET 1 cutter

FREE
of charge!

Minimum purchase of 20, Maximum purchase of 50 inserts

Insert:

AVMT12-MM (AH3225, T3225, T1215, AH120)

Max.ap = 11.5 mm, RE = 0.4 ~ 3 mm

AVGT12-AM (KS05F)

Max.ap = 11.5 mm, RE = 0.4, 0.8 mm

Shank type:

EPAV12M... (Short type)

DC = $\phi 12$ - $\phi 32$ mm

EPAV12M**L (Long type)

DC = $\phi 16$ - $\phi 32$ mm

Bore type:

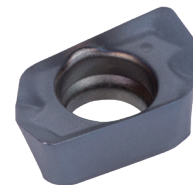
TPAV12M...

DC = $\phi 50$, $\phi 63$ mm

Modular type:

HPAV12M...

DC = $\phi 16$ ~ $\phi 40$ mm



AVMT12-MM

Single-sided insert with 2 cutting edges for general purpose



AVGT12-AM

Single-sided insert with 2 cutting edges for non-ferrous materials



EPAV12M...



TPAV12M...



HPAV12M...



NOW OFFERS AN EXPANDED RANGE OF **MILLING HEAD SIZES AND SHAPES** ALONG WITH TWO NEW GRADES

Choose the best head-shank combination for your endmilling operation. Minimize setup time while maximizing your productivity.

BUY 6 heads
AND
GET 1 steel shank holder

FREE of charge!

BUY 6 heads
AND
GET 1 carbide shank holder at

50 % secondary discount!



VFX
High-feed milling head with 4 and 6 flutes



VEH
Square head, with 4 flutes, variable pitch, variable helix

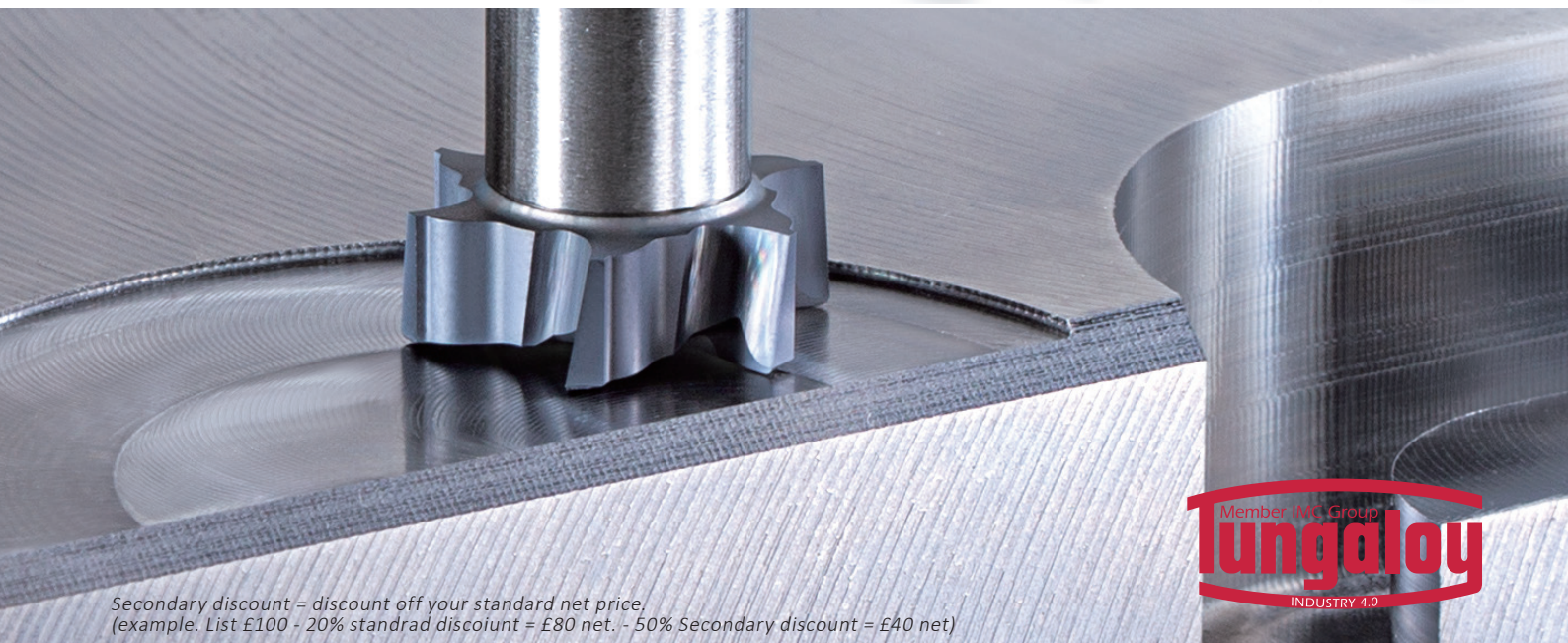
Head:

- | | |
|--------------------|-----------------|
| VBD (Ball) | VED (Square) |
| VBE (Ball) | VEE (Square) |
| VCA (Chamfering) | VEH (Square) |
| VCP (Chamfering) | VFM (Face) |
| VCW (Chamfering) | VFX (High feed) |
| VDS (Spot drill) | VST (Slot) |
| VDP (Center drill) | VTB (Slot) |

Grade: AH715, AH725, AH735, AH750

Shank type:

- VER, VSC, VSSD, VSTD, VTSD



INTERCHANGEABLE HEAD DRILL SYSTEM IMPROVES PRODUCTIVITY

Excellent cutting performance and tool life due to new head geometries and innovative grade AH9130
Tool change time is significantly reduced with simple and easy clamping system.

<p>BUY 4 drill heads</p> <p>AND</p> <p>GET 1 drill body of up to 3.5xD at</p>	<p>50 % secondary discount!</p>
<p>BUY 6 drill heads</p> <p>AND</p> <p>GET 1 drill body of up to 6xD at</p>	<p>50 % secondary discount!</p>
<p>BUY 8 drill heads</p> <p>AND</p> <p>GET 1 drill body of up to 8xD at</p>	<p>50 % secondary discount!</p>



DMC
Self centering point and double margins ensure excellent hole diameter accuracy and roundness



DMP
General purpose for various materials and machining operations

*Promotion applicable for DMC and DMP heads only

Drill head:
DMC... (AH9130)
DC = $\phi 6 \sim \phi 25.9$ mm
DMP... (AH9130)
DC = $\phi 6.8 \sim \phi 25.9$ mm

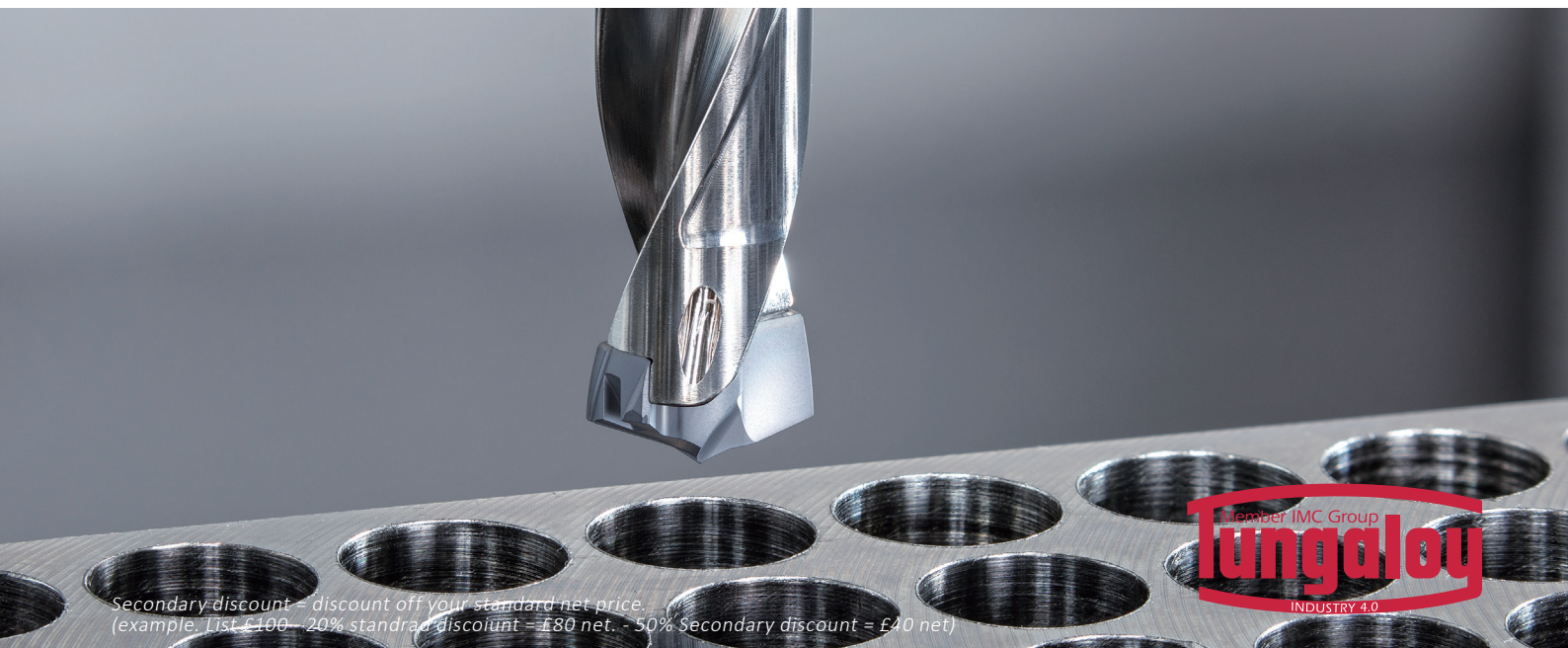
Drill bodies:
TID-F... (L/D = 1.5, 3, 5, 8)
DC = $\phi 6 \sim \phi 25.9$ mm
TID-R... (L/D = 3.5, 6, 8)
DC = $\phi 6 \sim \phi 19.9$ mm
TIDC... (L/D = 3, 5)
DC = $\phi 7.5 \sim \phi 19.9$ mm



TID-F...

TID-R...

TIDC...



Secondary discount = discount off your standard net price.
(example: List £100 - 20% standard discount = £80 net. - 50% Secondary discount = £40 net)



Tungaloy UK Limited

Gallan Park, A5 Watling Street
Cannock, Staffordshire, WS11 0XG

Phone: 0121 400 0231

Email: salesinfo@tungaloyuk.co.uk

Follow us:

Twitter & Facebook: @TungaloyUK

www.linkedin.com/company/tungaloy-uk

www.youtube.com - search "Tungaloy UK"

