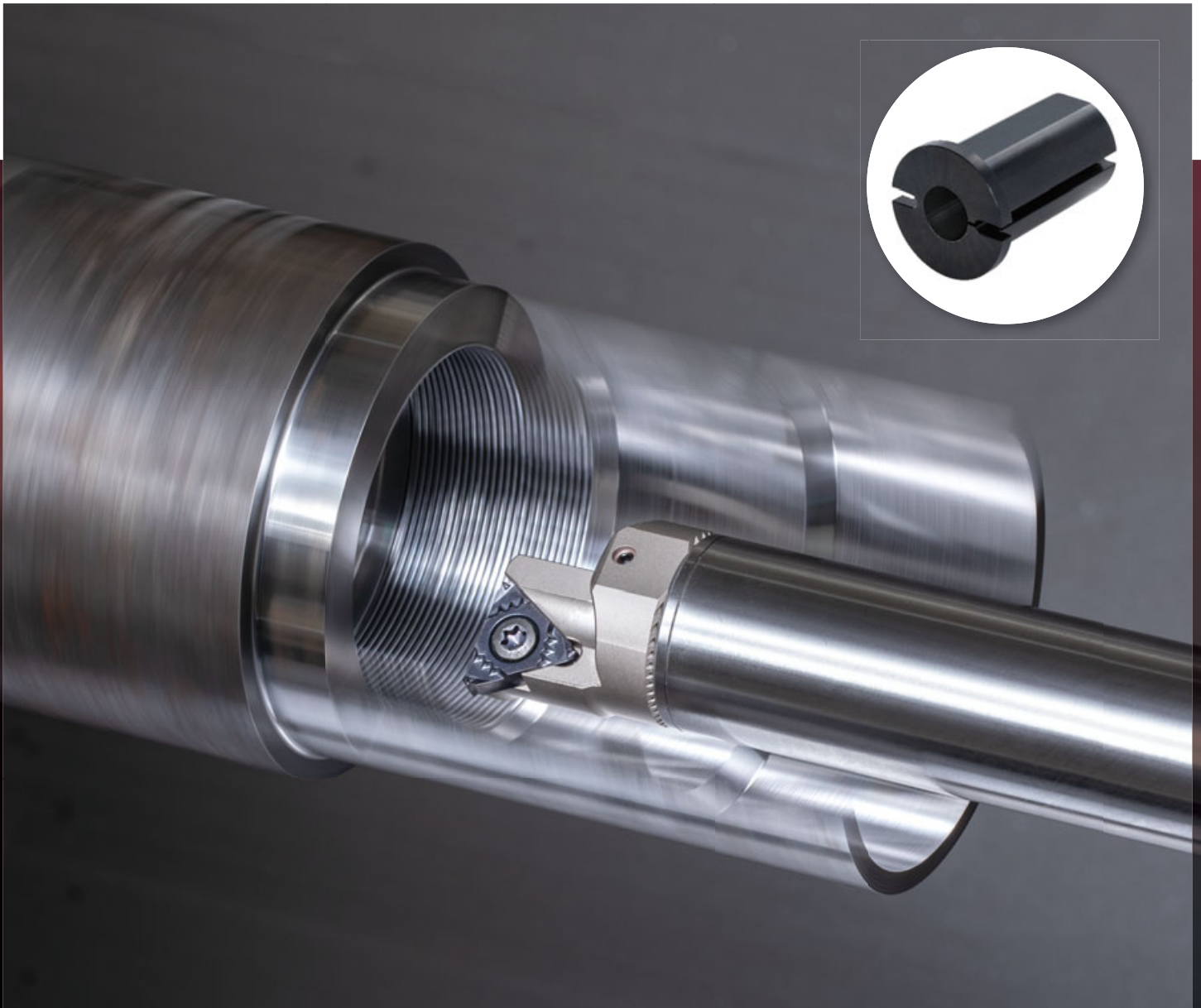




Narzędzia do wytaczania wewnętrznego
BOREMEISTER

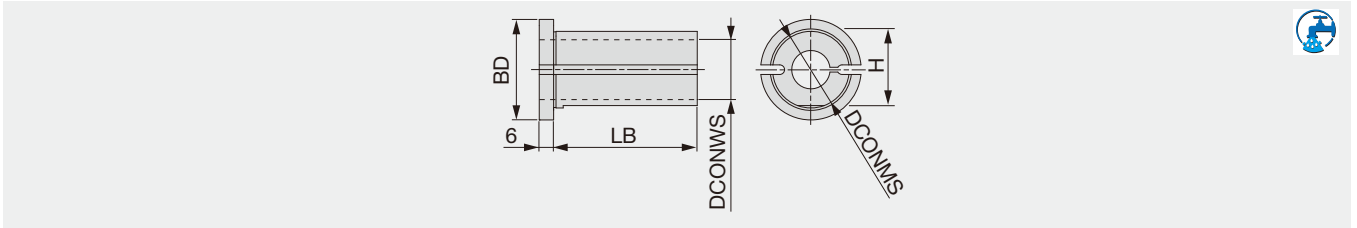
Tungaloy Report No. 517S6-G

Rozszerzenie oferty tulei dzielonych do wytaczaków antywibracyjnych



Tuleja RSL

Tuleje dzielone do wytaczaków antywibracyjnych.



Oznaczenie	DCONWS	DCONMS	BD	LB	H
RSL-32-16-L66	16	32	42	60	31
RSL-32-20-L66	20	32	42	60	31
RSL-32-25-L66	25	32	42	60	31
RSL-40-16-L76	16	40	50	70	38.5
RSL-40-20-L76	20	40	50	70	38.5
RSL-40-25-L76	25	40	50	70	38.5
New RSL-40-32-L106	32	40	50	100	38.5
New RSL-50-32-L126	32	50	60	120	48.5
New RSL-50-40-L126	40	50	60	120	48.5
New RSL-60-32-L156	32	60	70	150	58.5
New RSL-60-40-L156	40	60	70	150	58.5
New RSL-60-50-L156	50	60	70	150	58.5



tungaloy.com

follow us at:

facebook.com/tungaloyjapan

twitter.com/tungaloyjapan

www.youtube.com/tungaloycorporation

Distributed by:



Tungaloy APP & SNS

FIND US ON THE CLOUD!
machiningcloud.com



AS9100 Certified
78006
2015.11.04
ISO 14001 Certified
EC97J1123
1997.11.26