

PROMOTIONS

2023 B



we improve...
we evolve...
we **ADD**



Valid from July 1st to December 15th, 2023



tungaloy.com/us

UNIQUELY DESIGNED INSERTS FOR HIGH VERSATILITY, ECONOMY AND PRODUCTIVITY

Front Turning, Back Turning, Profiling, and Face Turning with ONE SINGLE TOOL

BUY 20 inserts

AND

GET 1 holder

FREE
of charge!

Promo code: TG181

BUY 20 inserts

AND

GET 1 CHP holder

50 %
additional
discount!

Promo code: TG181

6C-TOMG

6 corners
80° degrees



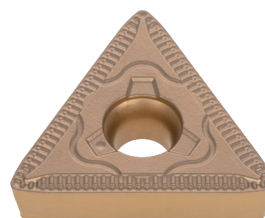
6V-TOMG

6 corners
35° degrees



3C-TCMT

3 corners (positive insert)
60° degrees



► Watch Video

🌐 Product Page

MODULAR HEAD TURNING TOOLHOLDER SYSTEM FOR SWISS MACHINES

Significantly reduces machine downtime for changing tools and setups

BUY 1 head and **10** inserts

AND

GET 1 shank

FREE
of charge!

Promo code: TG182*

* - not fulfillable on webshop, must contact customer service

Head:

QC12-, QC16-

External Turning

Back Turning

Grooving & Parting

Threading

Y-axis External

Y-axis Grooving

Y-axis Threading

Shanks:

Straight type

H = 12, 16 mm,

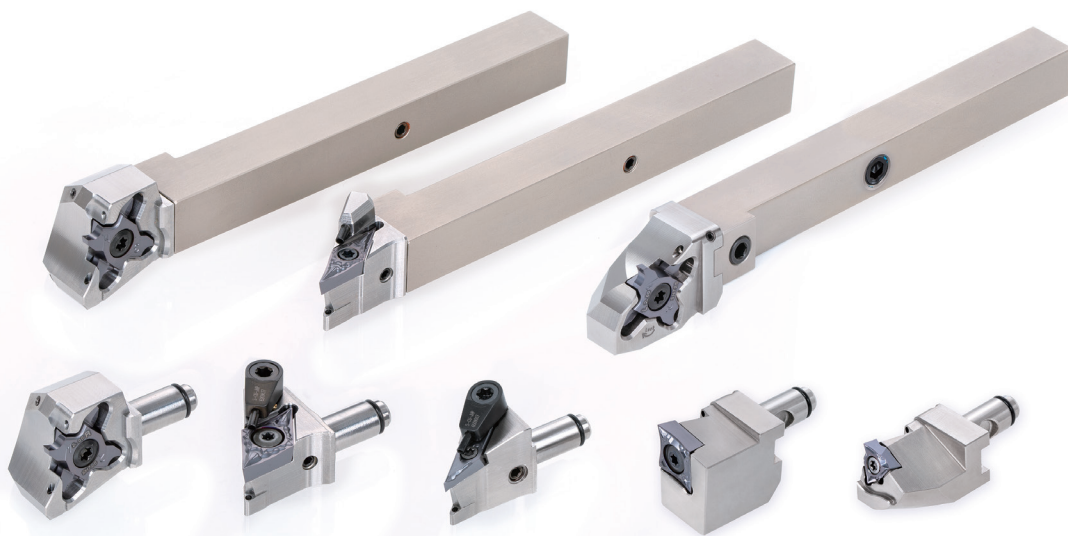
0.500", 0.625"

Stepped-head type

12x16, 16x20,

0.500"x0.625",

0.625"x0.750"



► Watch Video

🌐 Product Page

Y-AXIS TURNING TOOL WITH PSC CONNECTION FOR MULTITASKING MACHINES

ADD high productivity combined with multiple processes & tools into a single operation

BUY 1 shank

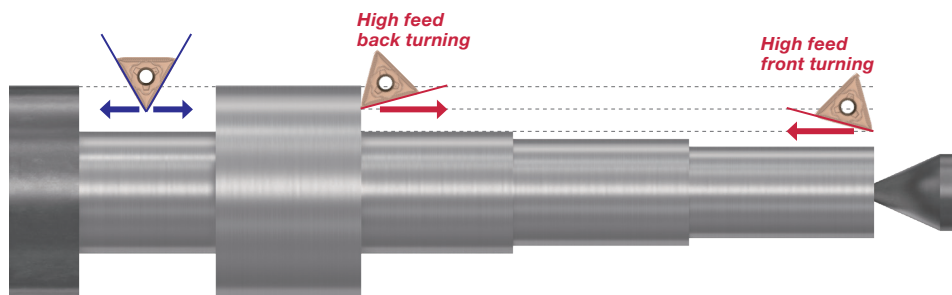
AND

GET 10 corresponding inserts

50 %
additional
discount!
Promo code: **TG183**

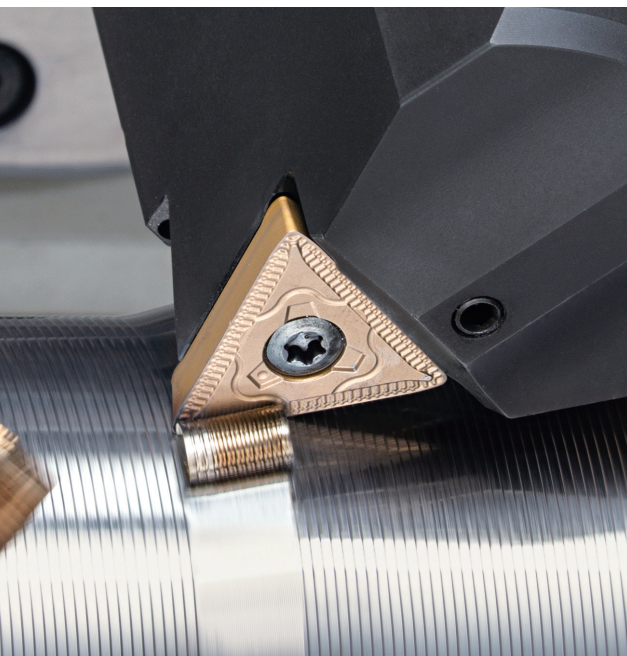
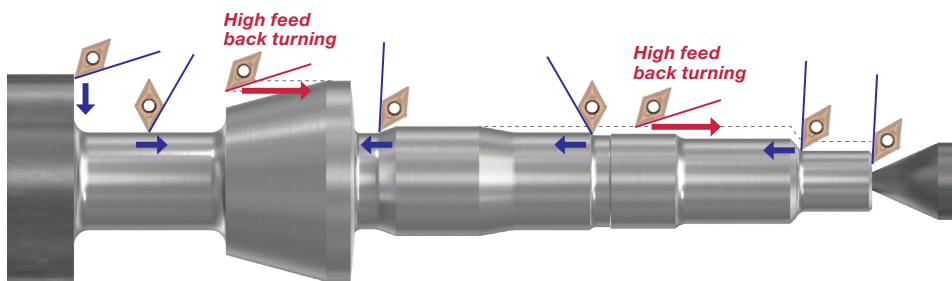
TCMT type

Single sided, 3 cutting edges
Max feed rate 2 mm/rev



DCMT type

Single sided, 2 cutting edges
Max feed rate 2 mm/rev



► Watch Video

🌐 Product Page

MULTI-PURPOSE GROOVING INSERT WITH ECONOMICAL 4-CUTTING EDGES

New **TCL38 insert** capable of up to 0.394" groove depth, making it an effective tool for cutting off thick-walled tubes, as well as precision grooving operations.

BUY 5 TCL38 inserts

AND

GET 1 toolholder

60 %
additional
discount!

Promo code: **TG186**

BUY 5 TCL38 inserts

AND

GET 1 **CHP** toolholder

40 %
additional
discount!

Promo code: **TG186**



Insert:

TCL38

CW = 0.059" - 0.157",
1.5mm - 4mm

Grade:

AH7025

Toolholder:

STC38,**

STC-38-CHP**

H = 0.750", 1.000", 1.250",
20mm, 25mm, 32mm

► Watch Video

🌐 Product Page

UNIQUE 4-EDGED INSERT FOR SMALL INTERNAL GROOVING OPERATIONS

The innovative clamping system eliminates insert movement caused by cutting forces.

BUY 10 inserts

AND

GET 1 steel shank

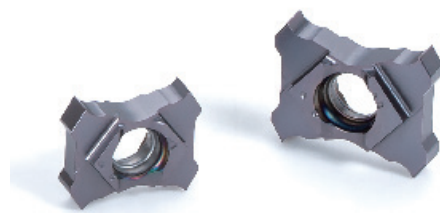
FREE
of charge!
Promo code: TG187

BUY 10 inserts

AND

GET 1 carbide shank

50 %
additional
discount!
Promo code: TG187



Insert:

TCIG10..., TCIG12...
CW = 0.020" - 0.118",
0.5 - 3 mm

Max. cutting depth
CDX = 0.118", 3 mm

Min. grooving dia:
DMIN = ø0.413",
ø10.5 mm

Toolholder:

A/E-STCIR/L
Shank dia. = ø0.500", ø0.625"
ø12, ø16 mm



► Watch Video

🌐 Product Page

MULTI-FUNCTIONAL SYSTEM FOR DIVERSE GROOVING NEEDS

Multi-functional tool series offering a wide range of grades, geometries and holder variations for maximum performance with minimum tool investments

BUY 10 inserts
with **AH8005** and **AH6235** grades
AND
GET 1 corresponding
holder

50 %
additional
discount!
Promo code: **TG184**

Including **CHP** holder

Grades:

AH8005, AH6235

Monoblock toolholder:

For external Grooving

CTER/L, CGER/L, CTEFR/L, JCTER/L, CTER/L-CHP



► Watch Video

🌐 Product Page

INNOVATIVE CLAMPING SYSTEM ASSURES STABILITY IN PARTING OFF OPERATIONS

Parting-off, grooving and threading tool series with rigid insert clamping. Perfect for machining bar stock of $\varnothing 0.787"$ ($\varnothing 20$ mm) or smaller

BUY 10 inserts

AND

GET 1 toolholder

FREE
of charge!
Promo code: TG188

BUY 10 inserts

AND

GET 1 CHP toolholder

50 %
additional
discount!
Promo code: TG188



Insert:

JXPS (with 3D chipbreaker)

CW = 0.024", 0.031", 0.039", 0.059", 0.079"
(0.6, 0.8, 1, 1.5, 2 mm)

Max. cutting depth

CDX = 0.138", 0.256", 0.335", 0.413"
(3.5, 6.5, 8.5, 10.5 mm)

Insert:

JXPG (sharp edge)

CW = 0.039", 0.059", 0.079"
(1, 1.5, 2 mm)

Max. cutting depth

CDX = 0.138", 0.256", 0.335", 0.413"
(3.5, 6.5, 8.5, 10.5 mm)

Insert:

JXDX (PCD insert)

CW = 0.079", 0.098" (2, 2.5 mm)

Max. cutting depth

CDX = 0.236", 0.256", 0.276"
(6, 6.5, 7 mm)

Insert:

JXTG (for Threading)

Thread angle: 60°

TPI Thread Per Inch:

JXTG***-000 = 64 -127

JXTG***005 = 25 - 64

JXTG***010 = 16 -25

Toolholder:

All

► Watch Video

🌐 Product Page

EXTREMELY RIGID POCKET DESIGN FOR THE MOST DEMANDING CUTTING CONDITIONS

Strong holder design ensures tool stability and productivity gains during demanding cutting conditions.

BUY 20 inserts

AND

GET 1 blade

FREE
of charge!

Promo code: TG189

BUY 10 inserts
+ 1 block

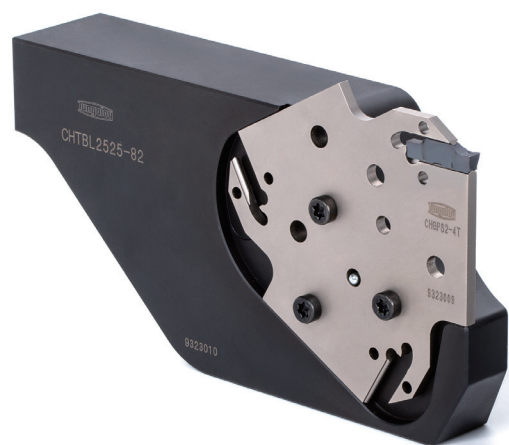
AND

GET 1 blade

FREE
of charge!

Promo code: TG190*

* - not fulfillable on webshop, must contact customer service



Insert:

TungCut

DGM, DGS, DTE, DTM, DTX, SGM, SGS

AddForceCut

QGM, QGS, QTX

Blade:

TungCut

CHGP

CW = 0.079", 0.118", 0.157" (2, 3, 4 mm)

AddForceCut

QSG

CW = 0.079", 0.118", 0.157", 0.197" (2, 3, 4, 5 mm)

ToolBlock:

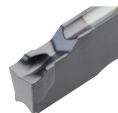
CHTBR/L

CHTBR/L-CHP

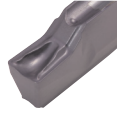
SGM/DGM



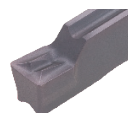
SGS/DGS



DTX



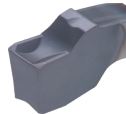
DTM



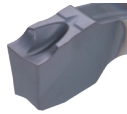
DTE



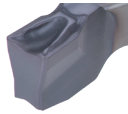
QGM



QGS



QTX



► Watch Video

🌐 Product Page

VERSATILITY MEETS EFFICIENCY

Innovative four-edged inserts provide ultimate machining flexibility and economy. All-round cutter with center cutting capability provides ultimate machining versatility

BUY 10 inserts per pocket

AND

GET 1 cutter

FREE
of charge!

Promo code: **TG185**

Insert:

LXMU-MM (AH120, AH3225, AH8015)

Shank type:

EVLX08/10/12...

Short type: DC = $\varnothing 0.625$ " - $\varnothing 1.000$ ",
 $\varnothing 16$ mm - $\varnothing 25$ mm

EVLX08/10/12L**

Long type: DC = $\varnothing 0.625$ " - $\varnothing 1.000$ ",
 $\varnothing 16$ mm - $\varnothing 26$ mm

Modular type:

HVLX08/10/12...

DC = $\varnothing 16$ - $\varnothing 25$ mm

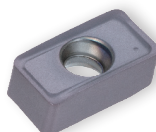
LXMU-MM



Size 08:

APMX = 0.276"

Tool dia. = $\varnothing 0.625$ "



Size 10:

APMX = 0.354"

Tool dia. = $\varnothing 0.750$ "



Size 12:

APMX = 0.433"

Tool dia. = $\varnothing 1.000$ "

► Watch Video

🌐 Product Page

COMPLETE SOLUTION FOR SHOULDER MILLING WITH OUTSTANDING PERFORMANCE AND COST-EFFECTIVE INSERTS

Economical shoulder milling cutter with 3 cutting edged insert with wide range of sizes, grades and diameters

BUY 10 inserts per pocket
AND
GET 1 cutter

FREE
of charge!
Promo code: TG192

Maximum purchase of 50 inserts is required to receive free cutter.
Limited up to diameter 5".

Insert:

TOMT04/06/10/15-MM/MJ/NMJ
(AH120, AH3135, AH3225, AH8015,
T1215, T3225)
APMX = 0.138", 0.236", 0.394", 0.591"

TOET06/10/15-MJ (AH3135, AH3225)
APMX = 0.236", 0.394", 0.591"

TOGT06/10/15-AJ (KS05F)
APMX = 0.236", 0.394", 0.591"

Bore type:

TPA06/10/15
DC = \varnothing 2.000" - \varnothing 5.000",
 \varnothing 32 - \varnothing 125 mm

Shank type:

EPA04
DC = \varnothing 8 - \varnothing 25 mm
EPA06/10/15
DC = \varnothing 0.500" - \varnothing 2.000",
 \varnothing 12 - \varnothing 50 mm

Modular type:

HPA06/10
DC = \varnothing 16 - \varnothing 32 mm



► Watch Video

🌐 Product Page

ROUGH MILLING CUTTER WITH EXCEPTIONAL RELIABILITY FOR TITANIUM ALLOYS AND CAST IRON PARTS

Extended-flute rough milling cutter with double-sided inserts for maximum productivity and cost efficiency

BUY 50 inserts
AND
GET 1 cutter

FREE
of charge!
Promo code: TG194*

Cutter requires both inserts: SXHU and AXHU

* - not fulfillable on webshop, must contact customer service

Insert:
SXHU, AXHU

Metric Cutter:
LPSX10 / LPSX10**C
DC = $\varnothing 50$, $\varnothing 54$, $\varnothing 66$ mm
APMX = 54, 76.5 mm

Inch Cutter:
LPSX10U
DC = $\varnothing 2.000$ ", $\varnothing 2.500$ ", $\varnothing 3.000$ "
APMX = up to 3.000"

SXHU...



Peripheral insert
8 cutting edges

AXHU...



Bottom insert
4 cutting edges

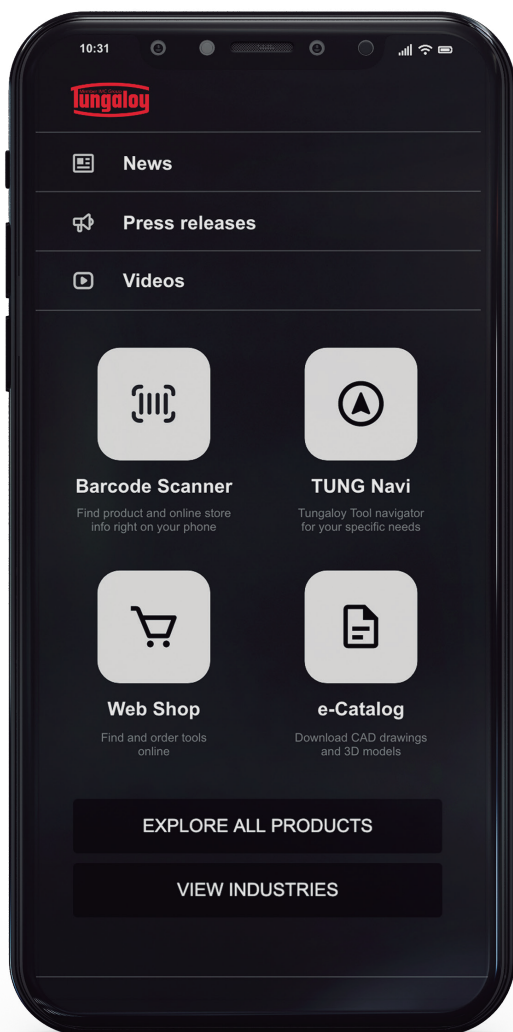


► Watch Video

🌐 Product Page

TUNGALOY THE APP

Get access to everything!



Push up Notifications

Barcode Scanner

Access to:

News

Press Releases

Technical Articles

Videos

Webshop

e-Catalog

TungNavi

Products

Industries

Insert Converter

and much more....





Tungaloy-NTK America, Inc.
3726 North Ventura Drive
Arlington Heights, IL 60004
tungaloy.com/us

Distributed by:



Jun. 2023 (TJ)