

we improve...  
we evolve...  
we **ADD**



# ADDFORCE PROMOTION

มีผลตั้งแต่วันที่ 1 ตุลาคม 2564 ถึง 31 มีนาคม 2565



[www.tungaloy.com/th](http://www.tungaloy.com/th)

มีผลตั้งแต่วันที่ 1 ตุลาคม 2564 ถึง 31 มีนาคม 2565

## EXCELLENT STABILITY FOR DEEP GROOVING AND PARTING-OFF DUE TO UNIQUE INSERT CLAMP

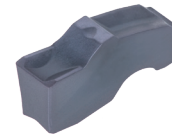
Newly developed clamping system provides higher tool rigidity, increased stability and reliability for deep grooving and parting-off.

<p><b>ชื่อ</b> 20 เบ็ดมิด</p> <p><b>ฟรี</b> 1 ใบมีดเบรค หรือ 1 ตามมิด</p>	<p><b>ฟรี</b> <b>ทันที!</b></p>
---	-------------------------------------

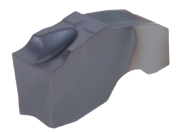
<p><b>ชื่อ</b> 10 เบ็ดมิด และ 1 บล็อก</p> <p><b>ฟรี</b> 1 ใบมีดเบรค หรือ 1 ตามมิด</p>	<p><b>ฟรี</b> <b>ทันที!</b></p>
---	-------------------------------------

Insert:  
QGM..., QGS... (AH7025)  
CW = 2 ~ 5 mm

Toolholder, Blade:  
QSER... (Holder)  
H = 20 / 25 mm  
QSP... (Blade)  
H = 26 / 32 mm  
CTBU... (Block)  
H = 20 / 25 / 32 mm



**QGM**  
The first choice chipbreaker for grooving and parting-off



**QGS**  
Sharp cutting edge for lower cutting force



**QSER...**



**QSP...**



**CTBU...**



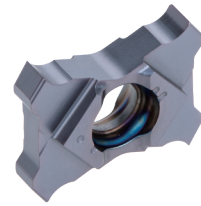
# AN INDUSTRY FIRST! FOUR EDGED ID GROOVING INSERT FOR PRE HOLE $\varnothing$ 10.5 MM AND LARGER

Unique clamp design provides maximum tool rigidity and true positioning of insert and high repeatability, ensuring high part quality.

ชื่อ 10 เม็ดมิด

ฟรี 1 ตามมิดเหล็กกล้า

**ฟรี**  
**ทันที!**



**TCIG10**

Low cutting force  
chip breaker  
prevents vibration  
and provides fine  
surface finish

ชื่อ 10 เม็ดมิด

ลด 1 ตามมิดคาร์ไบด์

**ลดทันที!**  
**50%**

**Insert:**

TCIG10... (AH725)

CW = 1.5 ~ 2.5 mm

**Toolholder:**

A\*STCIR/L (Steel shank)

DCONMS =  $\varnothing$ 12 mm

E\*STCIR/L (Carbide shank)

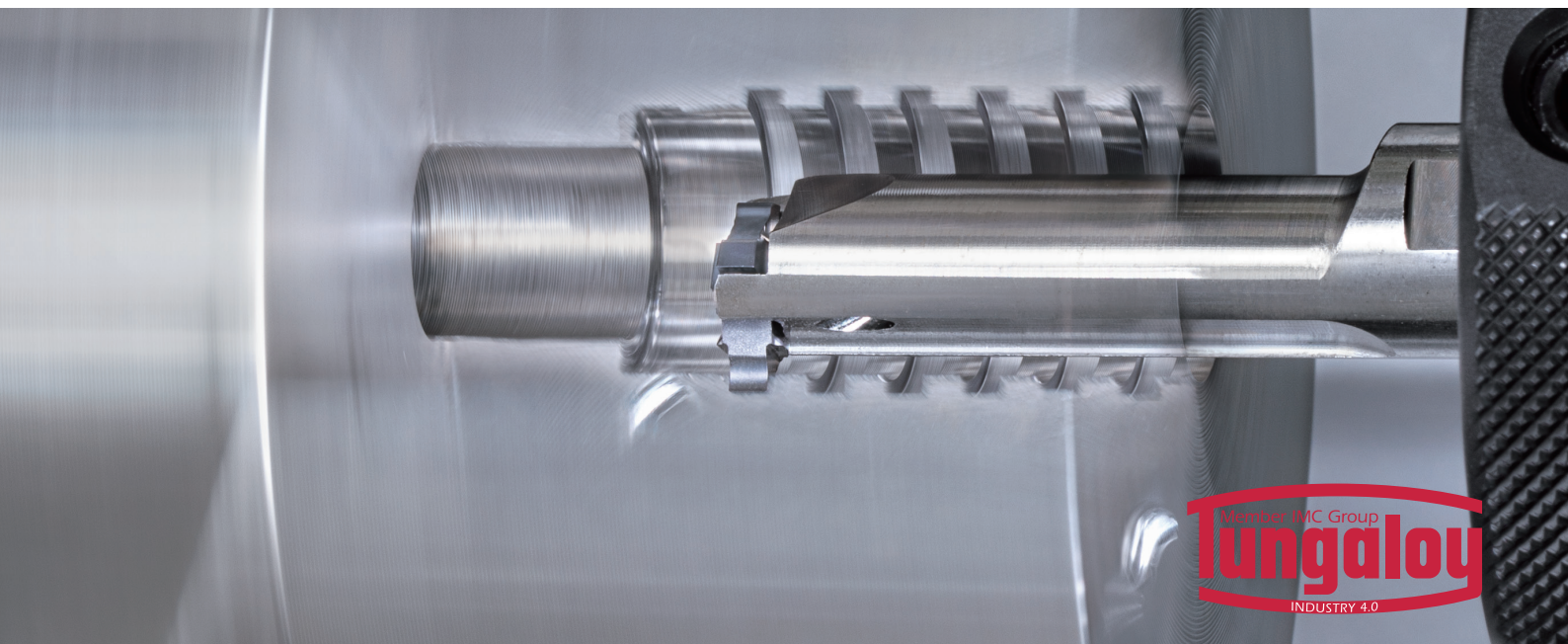
DCONMS =  $\varnothing$ 12 mm



A\*STCIR/L



E\*STCIR/L



## TCF18 INSERTS AND HOLDERS FOR SMALL-DIAMETER FACE GROOVING

Face grooving insert for  $\phi 6$  mm minimum groove diameter

ชื่อ 10 เม็ดมีด

ลด 1 ตำแหน่ง

ลดทันที!  
**60%**

ชื่อ 10 เม็ดมีด

ลด 1 ตำแหน่งชนิด  
มีรูน้ำหล่อเย็น CHP

ลดทันที!  
**40%**

Insert:

TCF18L... (SH725)

CW = 0.5 ~ 2.5 mm

Toolholder:

JS\*\*-STCFL18

DCONMS =  $\phi 16 \sim \phi 25.4$  mm

STCFVR\*\*18

H = 10 / 12 / 16 mm

STCL\*\*18

H = 10 / 12 / 16 / 20 / 25 mm

STCL\*\*18-CHP

H = 20 / 25 mm



TCF18L...

Sharp cutting edge and insert clamping rigidity provide superior surface finish.



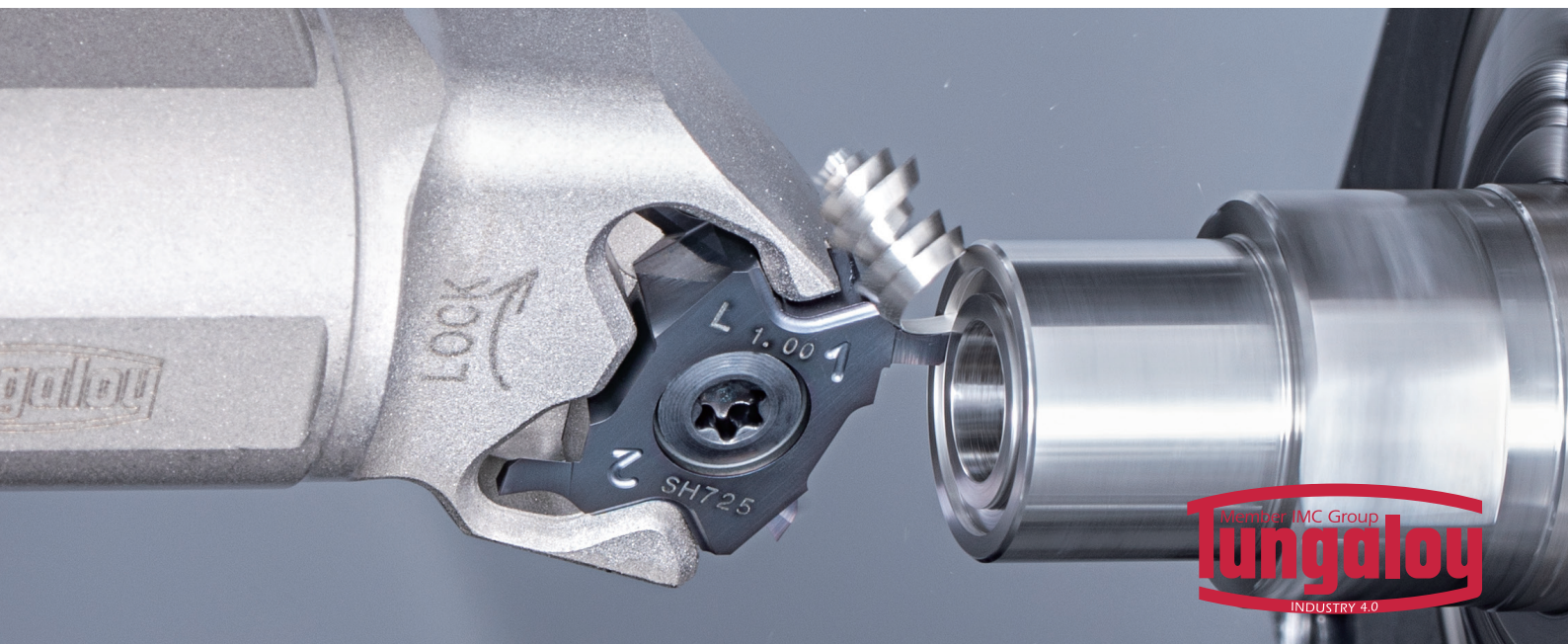
JS\*\*-STCFL18



STCFVR\*\*18



STCL\*\*18-CHP



## COST-EFFICIENT GROOVING AND PARTING TOOL SERIES NOW OFFERS TCL38 INSERT FOR **UP TO 10 MM GROOVE DEPTH**

Multi-purpose grooving insert with economical 4-cutting edges

ชื่อ	10 เบ็ดมิด	ลดทันที! <b>60%</b>
ลด	1 ตามมิด	

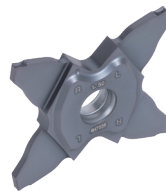
ชื่อ	10 เบ็ดมิด	ลดทันที! <b>40%</b>
ลด	1 ตามมิดชนิด มีรูนํ้าหล่อเย็น CHP	



STCR/L\*\*38...

Insert:  
TCL38... (AH7025)  
CW = 1.5 ~ 4 mm

Toolholder:  
STCR/L\*\*38...  
H = 20 / 25 / 32 mm  
STCR/L\*\*38-CHP  
H = 25 mm



TCL38...

Provides sharp cutting edge and low cutting force that eliminate burr formation and chatter.



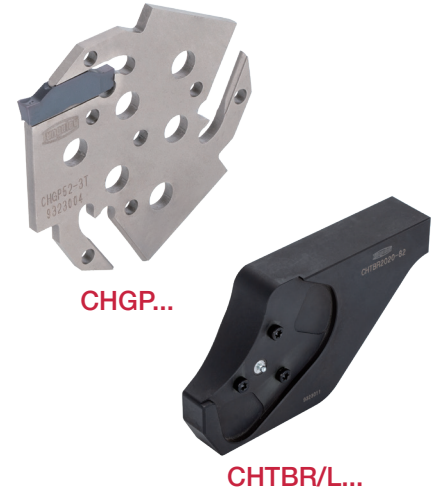
STCR/L\*\*38-CHP...



## THE ULTIMATE SOLUTION FOR *HIGH FEED GROOVING AND PARTING-OFF*

Strong holder design ensures excellent stability and productivity during demanding applications.

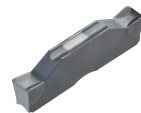
<p><b>ซ็อก</b> 20 เบ็ดมิด</p> <p><b>ฟรี</b> 1 ด้ามมิด</p>	<p><b>ฟรี</b> ทันที!</p>
<p><b>ซ็อก</b> 10 เบ็ดมิด และ 1 บล็อก</p> <p><b>ฟรี</b> 1 ด้ามมิด</p>	<p><b>ฟรี</b> ทันที!</p>



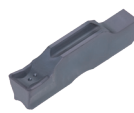
**Insert:**  
DGM..., SGM..., DGS..., SGS..., DGL...  
(AH7025)  
CW = 2 ~ 4 mm

**Blade:**  
CHGP...  
CUTDIA =  $\phi 52 / \phi 82$  mm

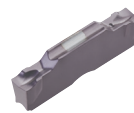
**Block:**  
CHTBR/L...  
H = 20 / 25 mm



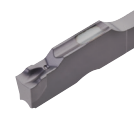
**DGM...**  
(Two cornered type)



**SGM...**  
(One cornered type)



**DGS...**  
(Two cornered type)



**SGS...**  
(One cornered type)



**DGL...**

The first choice for grooving and parting-off. Smooth chip evacuation well-designed edge with high strength

Lower cutting force with extremely sharp cutting edge

Specially designed chipbreaker for machining of gummy material



# AH6225

มีผลตั้งแต่วันที่ 1 ตุลาคม 2564 ถึง 31 มีนาคม 2565

TUNGALOY  
**ADDFORCE**  
ACCELERATED TURNING & THREADING

## SUPERIOR CRATER WEAR RESISTANCE ELIMINATES BUILT UP EDGE

AH6225 for stainless steel machining provides improved machining performance and efficiency in a wide application range.

ชื่อ 40 เบ็ดมิด

ฟรี 10 เบ็ดมิด

ฟรี  
ทันที!

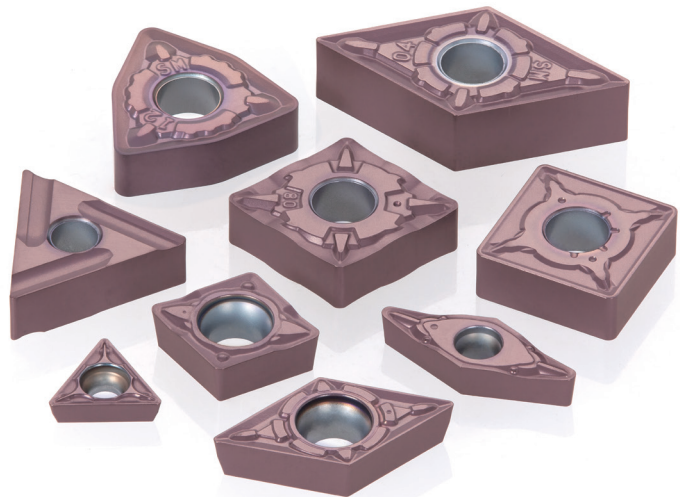
Insert:

Negative type

CNMG..., DNMG..., SNMG..., TNMG...,  
VNMG..., WNMG...

Positive type

CCMT..., CPMT..., DCMT..., SCMT...,  
TCMT..., TPMT..., VBMT..., VCMT...



Member IMC Group  
**Tungaloy**  
INDUSTRY 4.0

# DOUBLE-SIDED POSITIVE INSERT WITH SHARP CUTTING EDGE CAN BE USED ON COOLANT THROUGH TOOLHOLDERS

Optimized two streams of coolant jets to maximize productivity

ชื่อ 20 เบ็ดมิด  
ลด 1 ด้านมิดชนิด  
มีรูน้ำหล่อเย็น CHP

ลดทันที!  
**40%**

Insert:

DXGU..., DXMU..., VXGU..., WXGU...

Grade: AH725, AH8015, GT9530, NS9530,  
SH725, T9215, T9225, KS05F

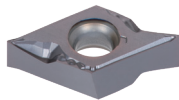
Toolholder:

JS\*\*-CHP

H = 10 / 12 / 16 mm

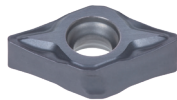


JS\*\*-CHP



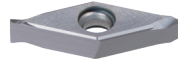
DXGU...

Double sided  
55deg rhombic  
inserts



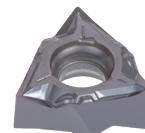
DXMU...

Double sided 55  
deg rhombic M  
class insert



VXGU...

Double sided  
35deg rhombic  
inserts



WXGU...

Double sided  
80deg trigon  
inserts





## NEW GNMG AND FNMG GEOMETRIES PROVIDE EXCELLENT CHIP CONTROL AND CHIP EVACUATION

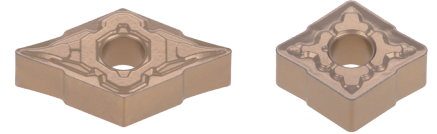
Small-sized turning inserts for best production economy with low cost per edge

ชื่อ 40 เม็ดมิด

ฟรี 10 เม็ดมิด

ฟรี  
ทันที!

ISO ETURN

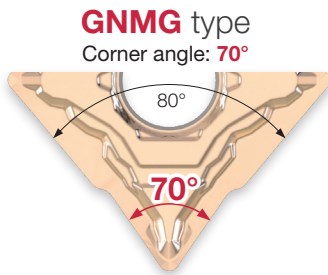


FNMG1104\*\*E-TSF GNMG0904\*\*E-TSF  
FNMG1104\*\*E-TM GNMG0904\*\*E-TM

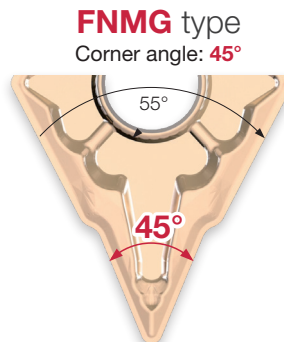
Insert:

FNMG... (45°), GNMG... (70°), YNMG... (25°)

Grade: T9215, T9225, T9235, NS9530, GT9530, AH8015



**GNMG0904** insert with 70° corners:  
good alternative to CNMG with 80° corners



**FNMG1104** insert with 45° corners:  
good alternative to DNMG with 55° corners



YNMG1604\*\*-ZF  
YNMG1604\*\*-ZM



## PS AND PM CHIPBREAKERS ARE NOW AVAILABLE ON NEGATIVE INSERTS FOR STEEL TURNING

New PS and PM chipbreakers complement the current TSF and TM. For improved crater wear resistance and chip control during turning at light cutting depths or at high feed rates.

ชื่อ 40 เม็ดมัด

ฟรี 10 เม็ดมัด

ฟรี  
ทันที!

Insert:

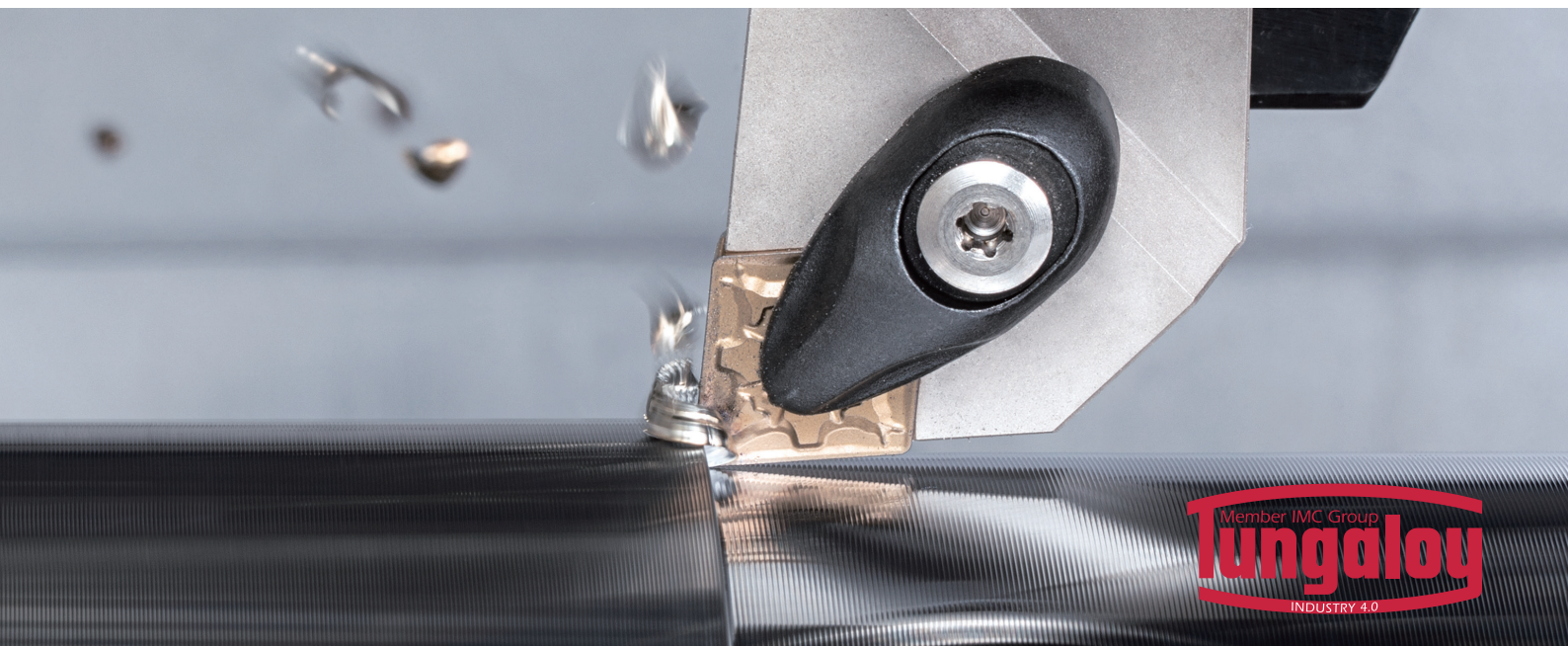
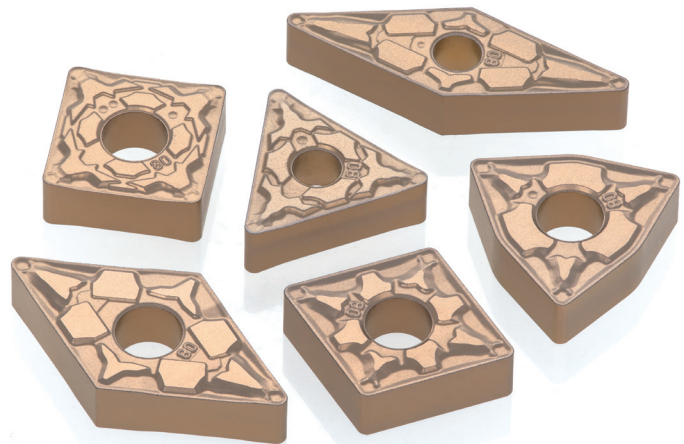
Chipbreaker: PS, PM

Negative type

CNMG..., DNMG..., SNMG..., TNMG...,

VNMG..., WNMG...

Grade: T9215, T9225



## SMALL DIAMETER HIGH FEED MILLING SOLUTION

Highly successful DoFeed series now available in smaller 8 mm diameter milling cutter. AddDoFeed double sided negative insert features a large rake angle with optimal inclination that allows good chip control and smooth chip evacuation.

ซื้อ 10 เม็ดมัดต่อ  
พ็อกเก็ต  
ฟรี 1 ตามมัด

ฟรี  
ทันที!

Maximum purchase of 50 inserts required

Insert:

LNMU02-MM (AH3225, AH8015, AH130)

Max. ap = 0.5 mm

Shank type:

EXN02R... (Short type)

EXN02R\*\*L (Long type)

DCX =  $\varnothing 8$  -  $\varnothing 25$  mm

Modular type:

HXN02R...

DCX =  $\varnothing 8$  -  $\varnothing 25$  mm



LNMU02-MM

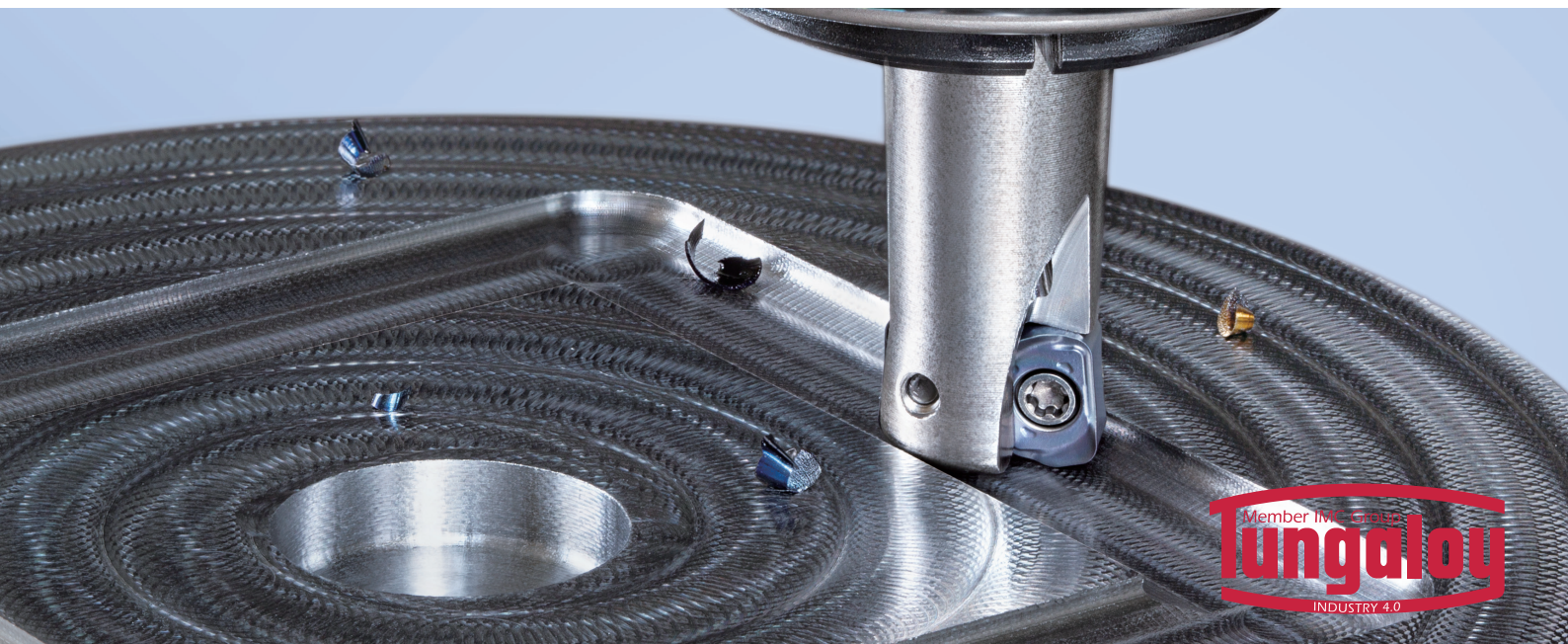
Double-sided insert  
with 4 cutting edges



EXN02R...  
EXN02R\*\*L



HXN02R...



## EXTREMELY COST-EFFICIENT SHOULDER MILL SERIES UNVEILS CUTTERS *IN SMALLER DIAMETERS THAN EVER BEFORE*

Tung-Tri 04 boasts an innovative insert geometry, featuring a super high rake for a small diameter cutter, which significantly reduces cutting forces while eliminating chatter and edge chipping.

ซื้อ 10 เม็ดมัดต่อ  
พ็อกเก็ต  
ฟรี 1 ตามมัด

ฟรี  
ทันที!

Maximum purchase of 50 inserts required

**Insert:**

TOMT04-MM (AH3225, AH8015, AH120)

Max.ap = 3.5 mm

RE = 0.4, 0.8 mm

**Shank type:**

EPA04R... (Short type)

DC =  $\varnothing 8 \sim \varnothing 25$  mm

EPA04R\*\*L (Long type)

DC =  $\varnothing 10 \sim \varnothing 25$  mm

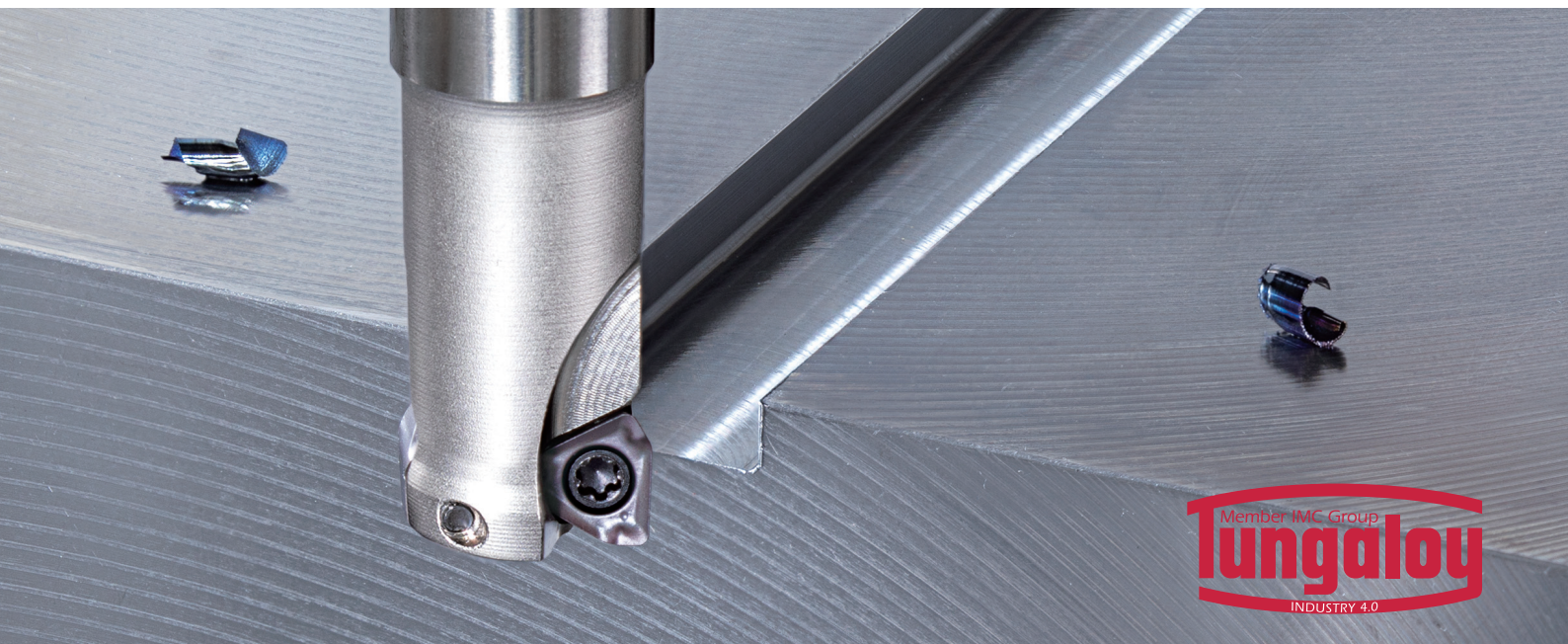


**TOMT04-MM**

Single-sided,  
3 cornered  
insert with MM  
chipbreaker



**EPA04...**



# VERSATILE SHOULDER MILLING CUTTER SERIES NOW OFFERS **SIZE 12 INSERT WITH UNIQUE V-SHAPED BOTTOM** FOR MAXIMUM PRODUCTIVITY

The use of unique V shaped bottom inserts enables the cutter to have higher tool rigidity and carry a greater number of inserts compared with conventional indexable shoulder milling cutters.

ซื้อ 10 เม็ดมัดต่อ  
พ็อกเก็ต  
ฟรี 1 ตามมัด

ฟรี  
ทันที!

Maximum purchase of 50 inserts required

Insert:

**AVMT12-MM (AH3225, T3225, T1215, AH120)**

Max.ap = 11.5 mm, RE = 0.4 ~ 3 mm

**AVGT12-AM (KS05F)**

Max.ap = 11.5 mm, RE = 0.4, 0.8 mm

Shank type:

**EPAV12M... (Short type)**

DC =  $\phi 12$  -  $\phi 32$  mm

**EPAV12M\*\*L (Long type)**

DC =  $\phi 16$  -  $\phi 32$  mm

Bore type:

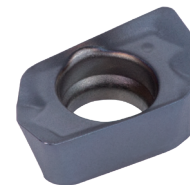
**TPAV12M...**

DC =  $\phi 50$ ,  $\phi 63$  mm

Modular type:

**HPAV12M...**

DC =  $\phi 16$  ~  $\phi 40$  mm



**AVMT12-MM**

Single-sided insert with 2 cutting edges for general purpose



**AVGT12-AM**

Single-sided insert with 2 cutting edges for non-ferrous materials



**EPAV12M...**



**TPAV12M...**



**HPAV12M...**



## NOW OFFERS AN EXPANDED RANGE OF **MILLING HEAD SIZES AND SHAPES** ALONG WITH TWO NEW GRADES

Choose the best head-shank combination for your endmilling operation. Minimize setup time while maximizing your productivity.

ซื้อ 6 หัวกัด

ฟรี 1 ด้ามบิดเหล็กกล้า

**ฟรี**  
**ทันที!**

ซื้อ 6 หัวกัด

ลด 1 ด้ามบิดคาร์ไบด์

**ลดทันที!**  
**50%**



**VFX**  
High-feed milling head with 4 and 6 flutes



**VEH**  
Square head, with 4 flutes, variable pitch, variable helix

**Head:**

- |                    |                 |
|--------------------|-----------------|
| VBD (Ball)         | VED (Square)    |
| VBE (Ball)         | VEE (Square)    |
| VCA (Chamfering)   | VEH (Square)    |
| VCP (Chamfering)   | VFM (Face)      |
| VCW (Chamfering)   | VFX (High feed) |
| VDS (Spot drill)   | VST (Slot)      |
| VDP (Center drill) | VTB (Slot)      |

Grade: AH715, AH725, AH735, AH750

**Shank type:**

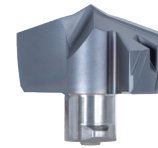
- VER, VSC, VSSD, VSTD, VTSD



## INTERCHANGEABLE HEAD DRILL SYSTEM IMPROVES PRODUCTIVITY

Excellent cutting performance and tool life due to new head geometries and innovative grade AH9130  
Tool change time is significantly reduced with simple and easy clamping system.

ชื่อ	4 หัวเจาะ	ลดทันที! <b>50%</b>
ลด	ด้านส่วน ในช่วง L/D (1.5XD-3.5XD)	
ชื่อ	6 หัวเจาะ	ลดทันที! <b>50%</b>
ลด	ด้านส่วน ในช่วง L/D (5XD-6XD)	
ชื่อ	8 หัวเจาะ	ลดทันที! <b>50%</b>
ลด	ด้านส่วน ในช่วง L/D (8XD)	



**DMC**  
Self centering point  
and double margins  
ensure excellent hole  
diameter accuracy  
and roundness



**DMP**  
General purpose  
for various  
materials and  
machining  
operations

\*Promotion applicable for DMC and DMP heads only

**Drill head:**

**DMC...** (AH9130)  
DC =  $\phi 6 \sim \phi 25.9$  mm  
**DMP...** (AH9130)  
DC =  $\phi 6.8 \sim \phi 25.9$  mm

**Drill bodies:**

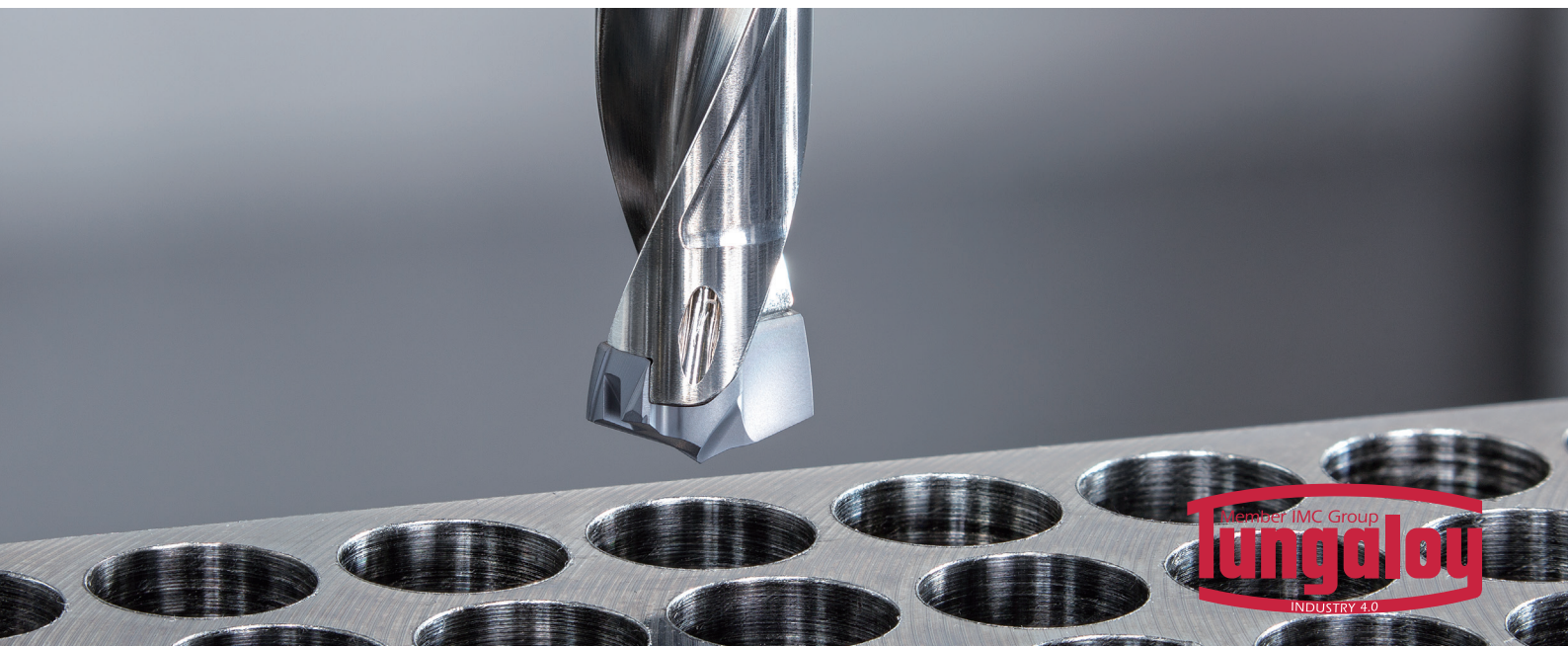
**TID-F...** (L/D = 1.5, 3, 5, 8)  
DC =  $\phi 6 \sim \phi 25.9$  mm  
**TID-R...** (L/D = 3.5, 6, 8)  
DC =  $\phi 6 \sim \phi 19.9$  mm  
**TIDC...** (L/D = 3, 5)  
DC =  $\phi 7.5 \sim \phi 19.9$  mm



TID-F...

TID-R...

TIDC...



## Tungaloy Corporation (Head office)

11-1 Yoshima-Kogyodanchi  
Iwaki-city, Fukushima 970-1144 Japan  
Phone: +81-246-36-8501  
Fax: +81-246-36-8542  
www.tungaloy.co.jp

## Tungaloy America, Inc.

3726 N Ventura Drive  
Arlington Heights, IL 60004, U.S.A.  
Phone: +1-888-554-8394  
Fax: +1-888-554-8392  
www.tungaloy.com/us

## Tungaloy Canada

432 Elgin St. Unit 3  
Brantford, Ontario N3S 7P7, Canada  
Phone: +1-519-758-5779  
Fax: +1-519-758-5791  
www.tungaloy.com/ca

## Tungaloy de Mexico S.A.

C Los Arellano 113,  
Parque Industrial Siglo XXI,  
Aguascalientes, AGS, Mexico 20290  
Phone: +52-449-929-5410  
Fax: +52-449-929-5411  
www.tungaloy.com/mx

## Tungaloy do Brasil Ltda.

Avd. Independencia N4158 Residencial Flora  
13280-000 Vinhedo, São Paulo, Brasil  
Phone: +55-19-38262757  
Fax: +55-19-38262757  
www.tungaloy.com/br

## Tungaloy Germany GmbH

An der Alten Ziegelei 1  
D-40789 Monheim, Germany  
Phone: +49-2173-90420-0  
Fax: +49-2173-90420-19  
www.tungaloy.de

## Tungaloy France S.A.S.

ZA Courtaboeuf - Le Rio  
1 rue de la Terre de feu  
F-91952 Courtaboeuf Cedex, France  
Phone: +33-1-6486-4300  
Fax: +33-1-6907-7817  
www.tungaloy.com/fr

## Tungaloy Italia S.r.l.

Via E. Andolfato 10  
I-20126 Milano, Italy  
Phone: +39-02-252012-1  
Fax: +39-02-252012-65  
www.tungaloy.com/it

## Tungaloy Czech s.r.o.

Turanka 115  
CZ-627 00 Brno, Czech Republic  
Phone: +420-532 123 391  
Fax: +420-532 123 392  
www.tungaloy.com/cz

## Tungaloy Ibérica S.L.

C/Miquel Servet, 43B, Nau 7  
Pol. Ind. Bufalvent  
ES-08243 Manresa (BCN), Spain  
Phone: +34 93 113 1360  
Fax: +34 93 876 2798  
www.tungaloy.com/es

## Tungaloy Scandinavia AB

Bultgatan 38  
442 40 Kungälv, Sweden  
Phone: +46-462119200  
Fax: +46-462119207  
www.tungaloy.com/se

## Tungaloy Rus, LLC

Andropova avenue, h.18/7,  
11 floor, office 3, 115432,  
Moscow, Russia  
Phone: +7-499-683-01-80  
Fax: +7-499-683-01-81  
www.tungaloy.com/ru

## Tungaloy Polska Sp. z o.o.

Ul. Iryszowa 1, 55-040 Bielany  
Wroclawskie, Poland  
Phone: +48 607 907 237  
www.tungaloy.com/pl

## Tungaloy U.K. Ltd

Gallan Park, Watling Street,  
Cannock, WS110XG, UK  
Phone: +44 121 4000 231  
Fax: +44 121 270 9694  
www.tungaloy.com/uk

## Tungaloy Hungary Kft

Erzsébet királyné útja 125  
H-1142 Budapest, Hungary  
Phone: +36 1 781-6846  
Fax: +36 1 781-6866  
www.tungaloy.com/hu

## Tungaloy Turkey

Dudullu, OSB 4. Cad No:4  
34776 Umraniye Istanbul, TURKEY  
Phone: +90 216 540 04 67  
Fax: +90 216 540 04 87  
www.tungaloy.com/tr

## Tungaloy Benelux b.v.

Tjalk 70  
NL-2411 NZ Bodegraven, Netherlands  
Phone: +31 172 630 420  
Fax: +31 172 630 429  
www.tungaloy.com/nl

## Tungaloy Croatia

Ulica bana Josipa Jelačića 87,  
10430, Samobor, Croatia  
Phone: +385 1 3326 604  
Fax: +385 1 3327 683  
www.tungaloy.com/hr

## Tungaloy Cutting Tool (Shanghai) Co., Ltd.

Rm No 401 No.88 Zhabei  
Jiangchang No.3 Rd  
Shanghai 200436, China  
Phone: +86-21-3632-1880  
Fax: +86-21-3621-1918  
www.tungaloy.com/cn

## Tungaloy Cutting Tools (Taiwan) Co., Ltd.

9F, No.293, Zhongyang Rd,  
Xinzhuan Dist, New Taipei City,  
24251 Taiwan  
Phone: +886-2-8521-9986  
Fax: +886-2-8521-8935  
www.tungaloy.com/tw

## Tungaloy Cutting Tools (Thailand) Co., Ltd.

Interlink tower 4th Fl.  
1858/5-7 Bangna-Trad Road  
km.5 Bangna, Bangna, Bangkok 10260  
Thailand  
Phone: +66-2-751-5711  
Fax: +66-2-751-5715  
www.tungaloy.com/th

## Tungaloy Singapore (Pte.), Ltd.

62 Ubi Road 1, #06-11 Oxley BizHub 2  
Singapore 408734  
Phone: +65-6391-1833  
Fax: +65-6299-4557  
www.tungaloy.com/sg

## Tungaloy Vietnam

LE04.38, Lexington Residence  
67 Mai Chi Tho St., Dist. 2,  
Ho Chi Minh City, Vietnam  
Phone: +84-2837406660  
www.tungaloy.com/sg

## Tungaloy India Pvt. Ltd.

Indiabulls Finance Centre,  
Unit # 902-A, 9th Floor,  
Tower 1, Senapati Bapat Marg,  
Elphinstone Road (West),  
Mumbai-400013, India  
Phone: +91-22-6124-8804  
Fax: +91-22-6124-8899  
www.tungaloy.com/in

## Tungaloy Korea Co., Ltd

#1312, Byucksan Digital Valley 5-cha  
Beotkkot-ro 244, Geumcheon-gu  
153-788 Seoul, Korea  
Phone: +82-2-2621-6161  
Fax: +82-2-6393-8952  
www.tungaloy.com/kr

## Tungaloy Malaysia Sdn Bhd

50 K-2, Kelana Mall, Jalan SS6/14  
Kelana Jaya, 47301  
Petaling Jaya, Selangor Darul Ehsan  
Malaysia  
Phone: +603-7805-3222  
Fax: +603-7804-8563  
www.tungaloy.com/my

## Tungaloy Australia Pty Ltd

Unit 68 1470 Ferntree Gully Road  
Knoxfield 3180 Victoria, Australia  
Phone: +61-3-9755-8147  
Fax: +61-3-9755-6070  
www.tungaloy.com/au

## PT. Tungaloy Indonesia

Kompleks Grand Wisata Block AA-10 No.3-5  
Cibitung  
Bekasi 17510, Indonesia  
Phone: +62-21-8261-5808  
Fax: +62-21-8261-5809  
www.tungaloy.com/id



www.tungaloy.com

follow us at:

facebook.com/tungaloyjapan

twitter.com/tungaloyjapan

www.youtube.com/tungaloycorporation



AS9100 Certified  
78006  
2015.11.04  
ISO14001 Certified  
EC97J1123  
1997.11.26

Distributed by: