

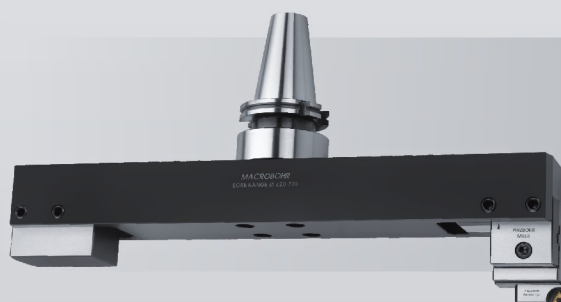
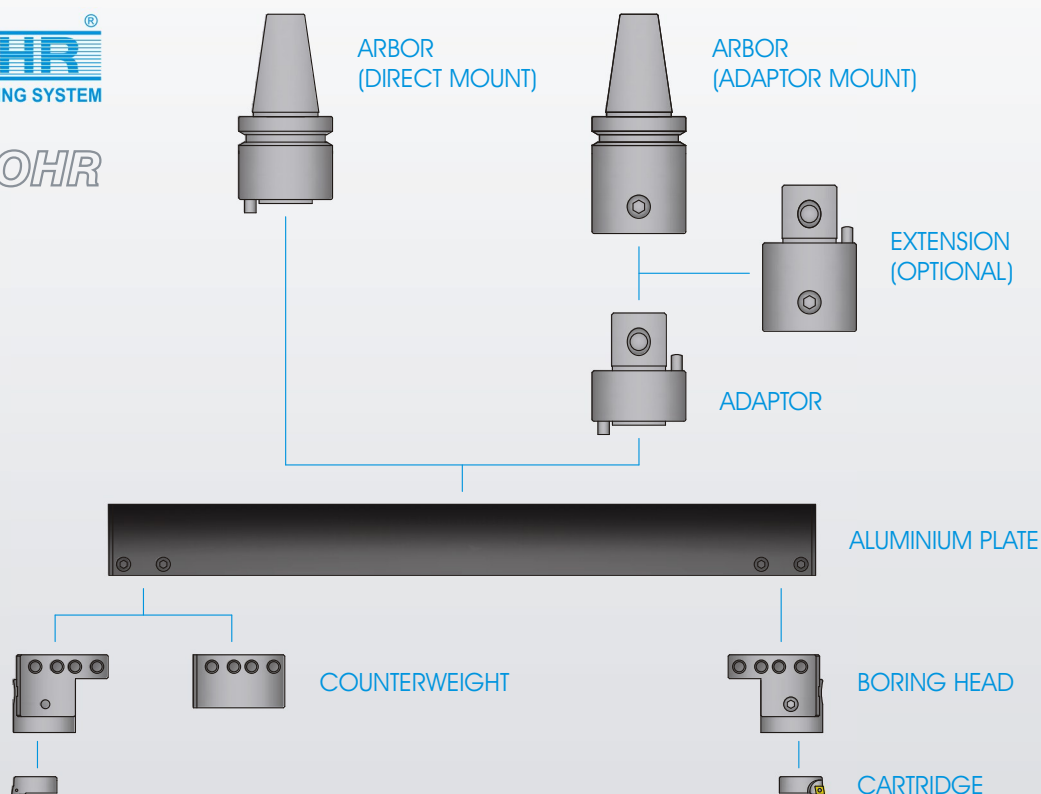
MACROBOHR

Lightweight tools line for large diameter boring

- HIGH STRENGTH ALUMINIUM PLATES
- MODULAR BORING SYSTEM

from Ø 220 mm up to 1020 mm





LIGHTWEIGHT TOOLS LINE

- High strength aluminium plates to reduce tool weight.

MODULAR BORING SYSTEM

- 8 aluminium plates allow boring from Ø220 mm up to 1020 mm.
- Arbor, boring head and counterweight are fully indexable on all aluminium plates.
- Each aluminium plate features a bore range of 100 mm, allowing finish, rough and external boring.
- Cartridges choice among several standard insert geometries.
- Arbors and accessories available for most machine spindles in order to meet each user needs.

EASY ADJUSTMENT

- Boring head is radially adjusted with a readout precision of 0.002 mm on diameter.
- Boring head and counterweight do have 2 radial positions on the aluminium plates to maximize bore range.

SECURE ASSEMBLY

- Boring head and counterweight fix aluminium plate by axial pressure tapered screws, providing high rigidity to perform a stable boring and avoid vibrations.
- Pre-load device keeping boring head displacement perpendicularity with the rotation axis.

BEST RELIABILITY

- Hard coated aluminium and nickel-chrome alloy steel to ensure the accuracy and repeatability of all components.