

โปรแกรมชั้น Q3-Q4 2024



Leading in Innovation



ตั้งแต่วันที่ 1 กรกฎาคม ถึง 15 ธันวาคม 2024
www.tungaloy.com

EFFICIENCY AND PROFITABILITY TO YOUR SMALL BORING OPERATIONS AS SMALL AS Ø0.6 MM

New SH725 PVD grade provides a good combination of wear and fracture resistance, ensuring long tool life and wear prediction.

ซื้อ 4 ด้ามคว้าน
โซลิดคาร์ไบด์
ลด 1 ด้ามจับ

ส่วนลด
25%

Solid Carbide bars (Grade SH725):

J/TBTR/L...
J/TBPR...
J/TBUR...
J/TBCR...
J/TBBR...
J/TBIR...
J/TBSR...
J/TBRR...
J/TBFR/L...
J/TBGR/L....

Sleeve:

JBBS...
JBBS-4N



video



e-catalog



INTERNAL GROOVING AND THREAD TURNING TOOL SERIES FOR BORES AS SMALL AS Ø5 MM

It offers unmatched precision and edge repeatability, thanks to its unique clamping system for rigid stability.
Featuring the latest PVD insert grade, SH7025, for superior surface quality and process security.

ชื่อ 10 เบ็ดมิด
แถม 1 ด้ามจับ

ฟรี

Inserts (Grade SH7025):

MGR...
MTR...

Toolholder:

A/E-SMR...



MGR
Grooving



MGR
Profiling (Full R)



MTR
Threading



A/E-SMR...



video



e-catalog



DEEP FACE GROOVING OF UP TO 10 MM DAXN AND UP TO 9 MM GROOVE DEPTH IS POSSIBLE

Extremely rigid insert clamping ensures tool stability during deep face grooving operations.

Sharp cutting edge, **combined with SH7025, the latest PVD grade**, provides long tool life and superior surface quality.

ซึ่ 10 เม็ดมิด
แณม 1 ด้านจับ

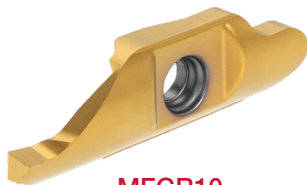
ฟรี

Inserts (Grade SH7025):

MFGR...

Toolholder:

A-MFR10...



MFGR10



e-catalog



DOUBLE-ENDED SMALL-SIZE INTERNAL GROOVING INSERTS WITH EXCEPTIONAL FEATURES

Enhanced chatter resistance is achieved through optimized screw placement, which strengthens the insert clamping capability. Larger pockets facilitate more effective and smooth chip evacuation.

ชื่อ 20 เบ็ดมิด
แถม 1 หัวโมดูลาร์
หรือตามจับ

ฟรี

Inserts:
DGS*S
DTR*S

Head:
S-CTIRS-H...

Toolholder:
CTIR**S



DGS*S

Lower cutting force and
superior sharpness
CW = 2, 3 mm



DTR*S

Full radius type
CW = 2, 3 mm



video



e-catalog



HIGH PRECISION GROOVING AND THREADING TOOL SERIES FOR CNC AUTOMATIC LATHES

Perfect for grooving and threading bar stocks of 12 mm or smaller diameters

ซื้อ 10 เม็ดมิด
แถม 1 ด้ามจับ

ฟรี

ซื้อ 10 เม็ดมิด
ลด หัวโมดูลาร์หรือด้ามจับ
ชนิดมีรูนํ้าหล่อเย็น

ส่วนลด
50%

Insert:

VGP08/10 (for Grooving)

CW = 0.33 - 1 mm

Insert:

VGT10F (for Threading)

Pitch = 0.4 - 2 mm

TPI = 12 - 64

Cutting edge angle = 55°, 60°

Toolholder:

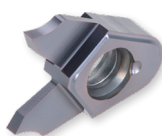
SVER/L...

SVER/L-CHP...

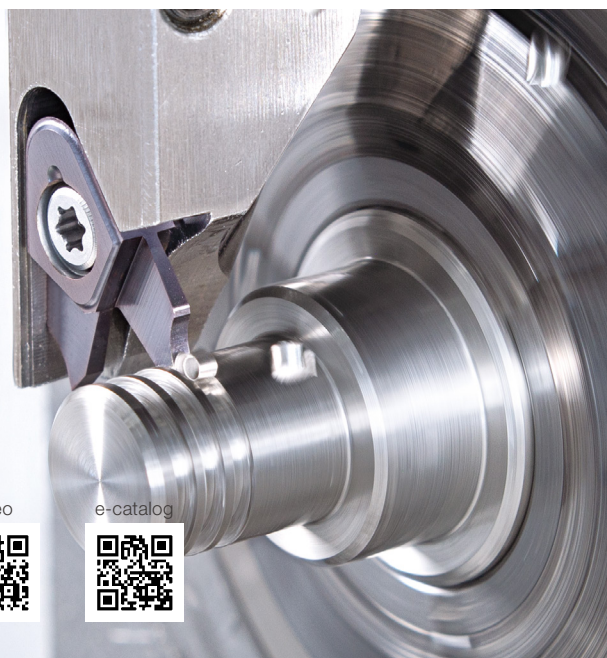
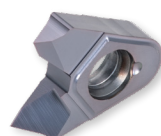
Head:

QC-SVER/L-CHP...

VGP08/10



VGT10F



video



e-catalog



Member IMC Group
Tungaloy

INNOVATIVE TURNING TOOL SERIES FOR CNC AUTOMATIC LATHES AND CAM-DRIVEN LATHES

Ideal for machining small parts of 12 mm or smaller diameters

ชื่อ 10 เบ็ดมิด
แถม 1 ด้ามจับ

ฟรี

Inserts:

JVPN**R/L (for Grooving and Parting-off)

CW = 0.5, 0.6, 0.8, 1 mm

JVFN45R/L (for Front Turning)

JVBN45/70 (Back Turning)*

JVTN (Threading)*

JVGN (Grooving)*

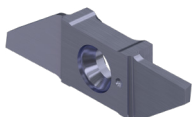
JVNR/L (Blank insert)

Toolholder:

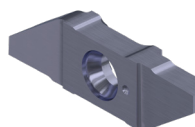
0606, 0707, 0808, and 1010 type

*available from Sept. 2024

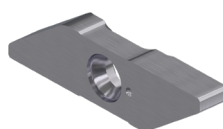
JVPN**R/L



JVFN45R/L



JVNR/L



video



e-catalog



HIGH FEED MILLING CUTTERS ENABLING LONG OVERHANG APPLICATIONS AND EXTENDED TOOL LIFE

Optimal depth of cut can be selected in machining various work materials

ข้อ 10 เบ็ดมิด
ต่อพื้คกต

ลด 1 หัวคัตเตอร์

ส่วนลด
50%

Limited up to diameter 125 mm

Inserts (Grades: AH3135, AH3225, AH120, AH130 AH8015):

SWMT09/15**ZER
SWMT09/15**UER

Cutter bodies:

Bore type:

TXSW09/15

DCX = $\varnothing 40 - \varnothing 125$ mm

Shank type:

EXSW09

DCX = $\varnothing 25 - \varnothing 32$ mm

Modular type:

HXSW09

DCX = $\varnothing 25 - \varnothing 32$ mm



SWMT09/15ZER**

Max. depth of cut

– SWMT09**ZER: 1.5 mm

– SWMT15**ZER: 2.5 mm



SWMT09/15UER**

Max. depth of cut

– SWMT09**UER: 1 mm

– SWMT15**UER: 2 mm



video

e-catalog



ULTIMATE HIGH FEED MILLING CUTTER SERIES FOR MAXIMUM PRODUCTIVITY

Small diameter high-feed milling cutter for expanded application coverage, featuring cutter bodies as small as $\varnothing 8$ mm

ชื่อ 10 เบ็ดมิด
ต่อพ็อคเกต
แถม 1 หัวคัตเตอร์

ฟรี

Insert (Grades: AH3225, AH130, AH8015):

LNMU02

Cutter bodies:

Shank type:

EXN02R... (Short type)

EXN02R**L (Long type)

DCX = $\varnothing 8$ – $\varnothing 25$ mm

Modular type:

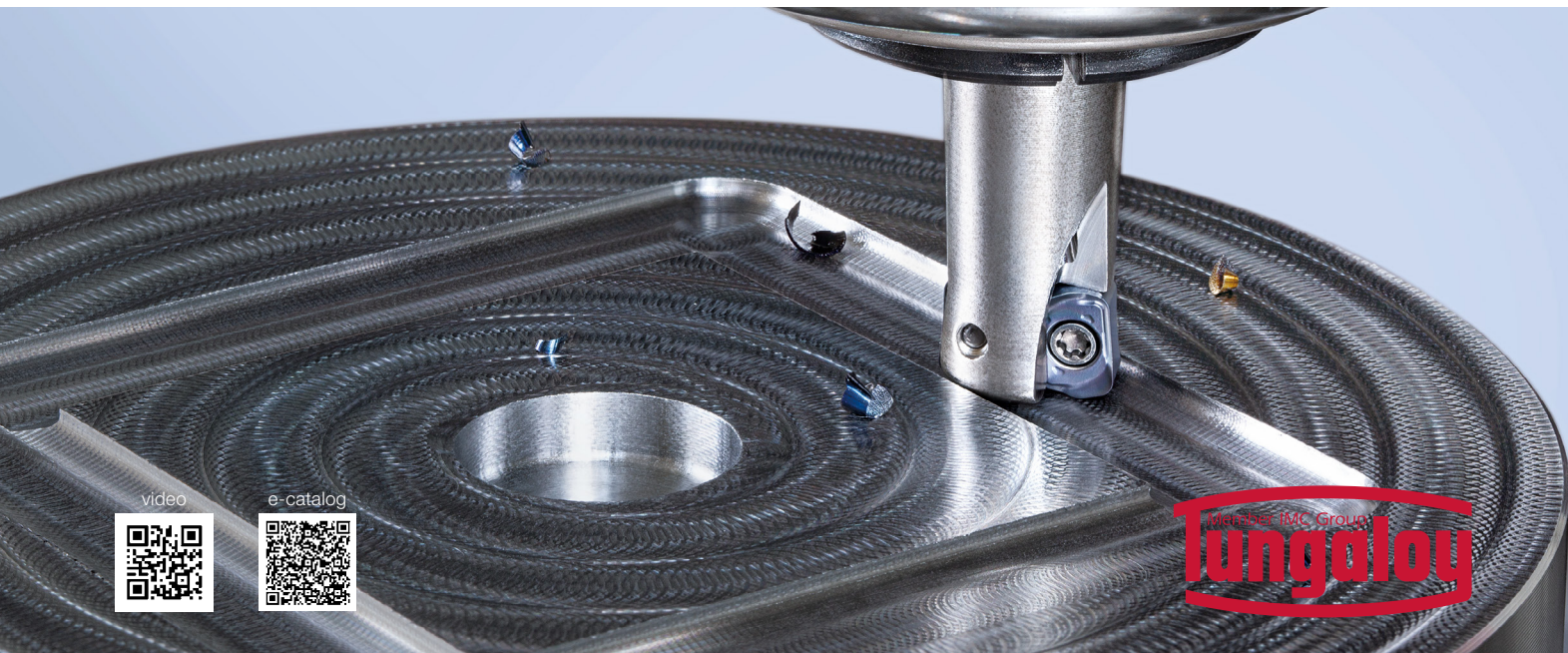
HXN02-M/S

DCX = $\varnothing 8$ – $\varnothing 25$ mm



LNMU02-MM

Double-sided,
4-edged insert
APMX = 0.5 mm



video



e-catalog



Member IMC Group
Tungaloy

COMPLETE SOLUTION FOR SHOULDER MILLING WITH OUTSTANDING PERFORMANCE AND COST-EFFECTIVE INSERTS

Economical shoulder milling cutter with 3 cutting edged insert with wide range of sizes, grades and diameters

ซื้อ 10 เบ็ดมิด
ต่อพ็อคเกต
ลด 1 หัวคัตเตอร์

ส่วนลด
50%

Limited up to diameter 125 mm

Insert (Grade: T1215, KS05F, T3225,
AH8015, AH3135, AH3225, AH120):
TO*T04/06/10/15 - MJ/MM/AJ/NMJ

Cutter bodies:

Bore type:

TPA06/10/15

DC = $\varnothing 32 - \varnothing 125$ mm

Shank type:

EPA04/06/10/15

DC = $\varnothing 8 - \varnothing 50$ mm

Modular type:

HPA06/10-M

DCX = $\varnothing 16 - \varnothing 32$ mm



TO*T04
APMX 3.5 mm

TO*T06
APMX 6 mm

TO*T10
APMX 10 mm

TO*T15
APMX 15 mm



video



e-catalog



FACE MILLING CUTTERS WITH UNIQUE INSERT SHIMS FOR EXTRA TOOL RELIABILITY

Carries double-sided tangential inserts with 4 cutting edges for superior tool reliability.

ชื่อ 10 เบ็ดมิด
ต่อพ็อคเกต

แถม 1 หัวคัตเตอร์

ฟรี

Limited up to diameter 125 mm

Insert (Grades: AH3225, AH8015):

LMMU11/16-MJ

Cutter bodies:

Bore type:

TPM11/16

DC = $\varnothing 50 - \varnothing 125$ mm

TGM16

DC = $\varnothing 100 - \varnothing 125$ mm

Shank type:

EPM11

DC = $\varnothing 32 - \varnothing 80$ mm



TGM16SA**
APMX 12.4 mm
60° cutter

LMMU11/16-MJ



e-catalog



EXCHANGEABLE HEAD DRILL SYSTEM FOR SUPERIOR DRILLING PERFORMANCE AND LONG TOOL LIFE

Quick drill tip change for reduced machine downtime.

Tool inventory and management costs are significantly reduced as there is no need for regrinding.

ซื้อ 6 ดอกสว่าน
ลด 1 ด้านสว่าน
ได้ทั้ง 8xD

ส่วนลด
50%

Drill heads (Grades: AH9130, KS15F):

DMP, DMC, DMF, DMH, DMN

Drill bodies:

TID-F (1.5xD, 3xD, 5xD, 8xD)

TID-R (3.5xD, 6xD, 8xD)

TID-R-E (2xD)

TIDC (3xD, 5xD)

TID-M (2xD, 3xD)

TID-S (2xD)

TID-L-A-M



DMP

Drill dia.:

ø6 - ø25.9 mm

General purpose drilling head ideal for various drilling applications

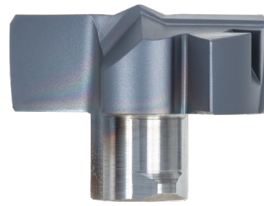


DMC

Drill dia.:

ø6 - ø25.9 mm

High precision drilling head with double-margined drill periphery and self-centering chisel edge



DMF

Drill dia.:

ø6 - ø25.9 mm

180° flat edges for counterboring and flat bottoms



DMH

Drill dia.:

ø6 - ø25.9 mm

General purpose head with enhanced cutting edge



DMN

Drill dia.:

ø6.8 - ø19.5 mm

Drill head with sharp edges for non-ferrous materials

video



e-catalog



DRILL BODIES LINEUP



TIDC
Drill dia.:
ø8.5 - ø19.9 mm
3xD and 5xD

TID-F
Drill dia.:
ø6 - ø25.9 mm
1.5xD, 3xD, 5xD, 8xD

TID-R / TID-R-E
Drill dia.:
ø6 - ø19.9 mm
2xD, 3.5xD, 6xD, 8xD

MODULAR DRILL BODIES LINEUP



video



TID-M
Drill dia.:
ø6 - ø18.9 mm
2xD and 3xD
TungFlex connection

TID-S
Drill dia.:
ø6.5 - ø10.9 mm
2xD
TungMeister connection

video



TID-L-A-M
Drill dia.:
ø6.5 - ø16.9 mm
TungFlex connection
Drilling+Chamfering /
pre-thread Drilling