

ส่วนที่ 2

we improve...  
we evolve...  
we **ADD**

TUNGALOY  
**ADD FORCE**  
ACCELERATED LINES

# ADD FORCE PROMOTION

มีผลตั้งแต่ 1 มกราคม 2565 ถึง 30 มิถุนายน 2565



[www.tungaloy.com/th](http://www.tungaloy.com/th)

มีผลตั้งแต่วันที่ 1 มกราคม 2565 ถึง 30 มิถุนายน 2565

## SUPERB STABILITY AND PRODUCTIVITY FOR DEEP GROOVING AND PARTING-OFF OPERATIONS

ADD highly rigid self-clamping system to improve productivity in deep grooving and parting-off operations

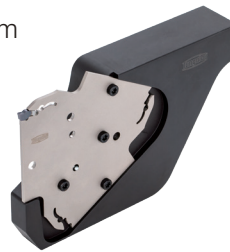
<p>ชื่อ 20 เบ็ดมิด</p> <p>และ</p> <p>ฟรี 1 ใบมิดเบรด</p>	<p><b>ฟรี</b></p> <p><b>ทันที!</b></p>
<p>ชื่อ 10 เบ็ดมิด และ 1 บล็อก</p> <p>และ</p> <p>ฟรี 1 ใบมิดเบรด</p>	<p><b>ฟรี</b></p> <p><b>ทันที!</b></p>



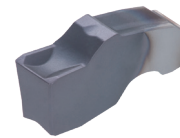
QSG...

**Inserts:**  
QGM...  
QGS...  
CW = 2 - 5 mm  
**Grade:**  
AH7025

**Block:**  
CHTBR/L...  
H = 20, 25 and 32 mm

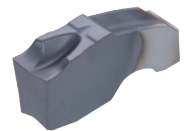


CHTBR/L...



**QGM**

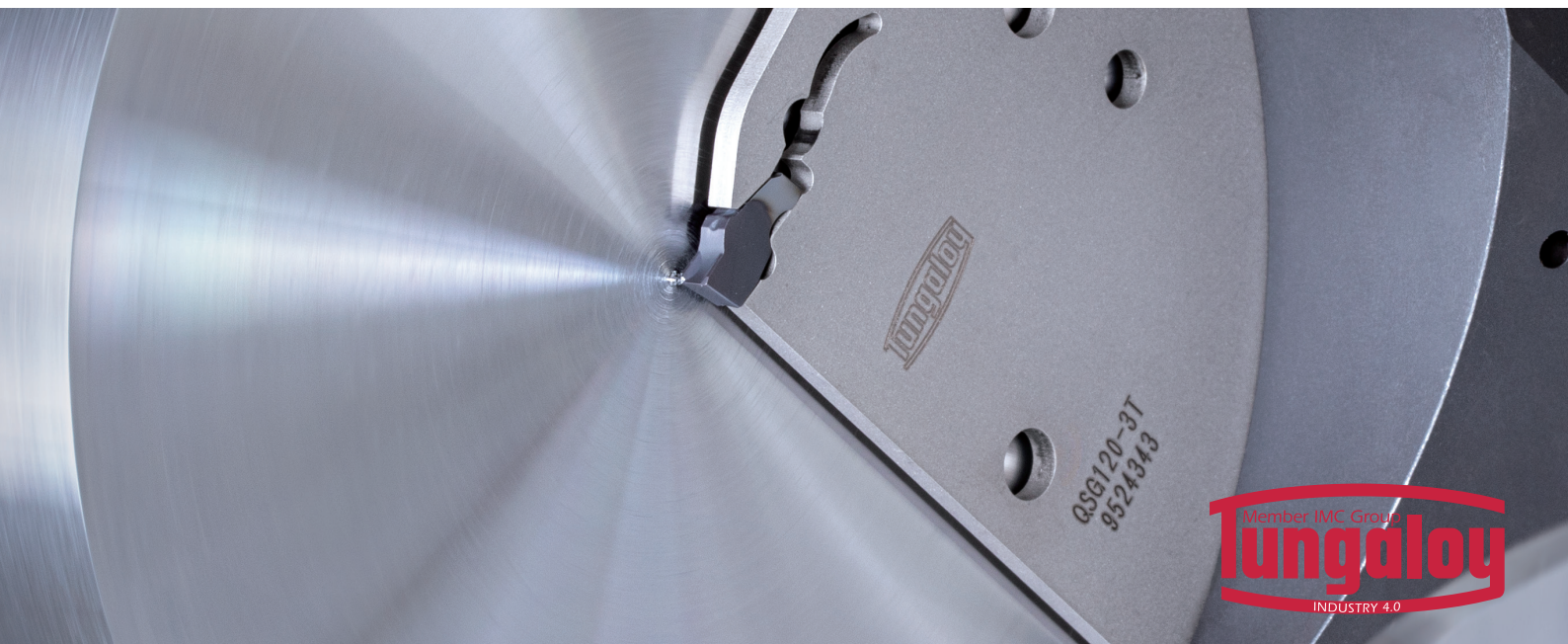
The first choice chipbreaker for grooving and parting-off



**QGS**

Sharp cutting edge for lower cutting force

**Blade:**  
QSG...  
CW = 2 - 5 mm  
Max cut-off diameters:  
CUTDIA =  $\phi$ 52,  $\phi$ 82 and  $\phi$ 120 mm





## 0.6 AND 0.8 MM-WIDE PARTING INSERTS WITH PRESSED 3D CHIPBREAKER

ADD significant reduction of material waste for increased mass-production economy

ชื่อ 20 เบ็ดมิด

และ

ฟรี 1 ตั้มมิด

ฟรี  
ทันที!

ชื่อ 20 เบ็ดมิด

และ

ลด 1 ตั้มมิดชนิดมี  
รูน้าหล่อเย็น CHP

ลดทันที!  
40%



JSXXR/L...



JSXXR/L\*\*-S...

**Inserts:**

JXPS06R/L06F

CW = 0.6 mm

JXPS12R/L08F

CW = 0.8 mm

**Grade:**

SH725

**Toolholders:**

JSXXR/L...

JSXXR/L\*\*-S

JSXXR/L\*\*-CHP

JSXXR\*\*-S-CHP

H = 10, 12, 16 mm

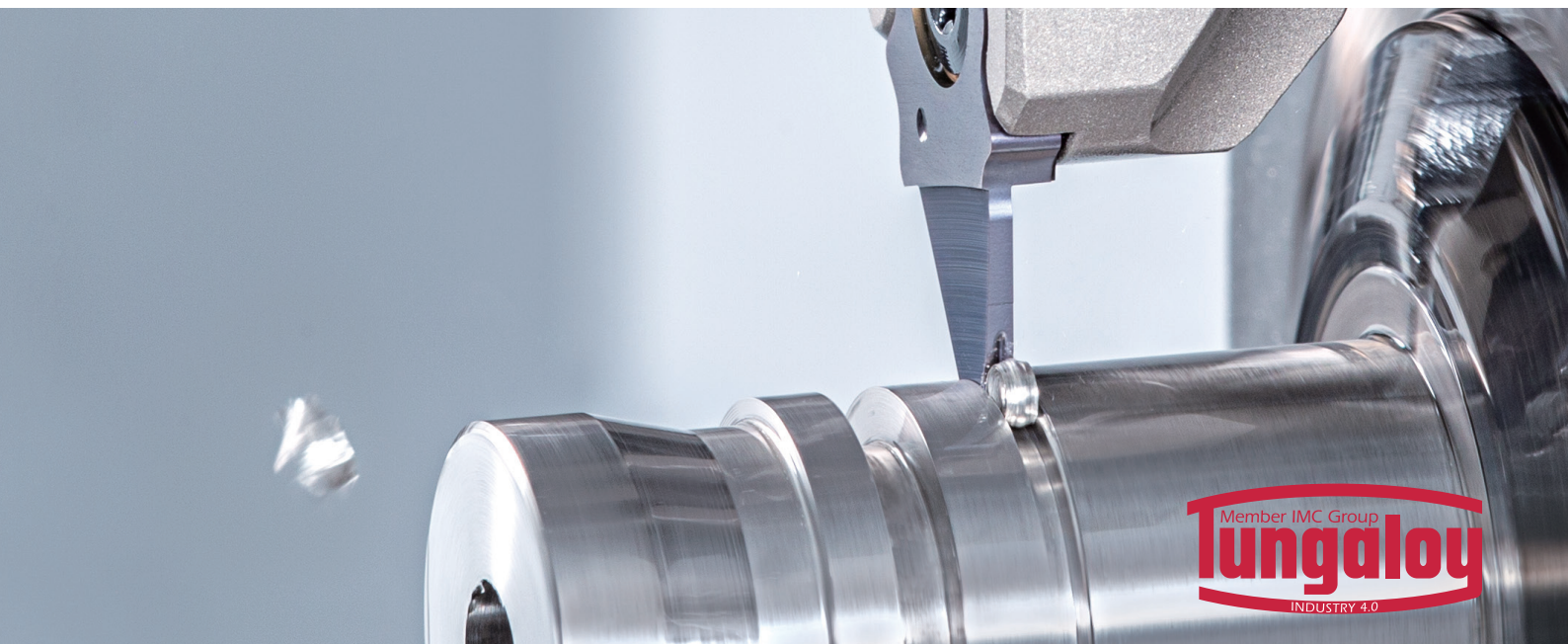


JXPS06\*\*06F



JXPS12\*\*08F

Innovative JXPS chipbreaker enables effective chip control



## 6-CORNER CBN INSERT FOR MORE RELIABLE, ECONOMICAL AND PRODUCTIVE I.D. TURNING OF HARD PARTS

ADD double-sided CBN inserts with **WavyJoint** brazing technology for light cutting action of positive inserts

ชื่อ 5 เ็ด็ดม็ด CBN

และ

ฟรี 1 ด้ามม็ด

ฟรี  
ทันที!

**Inserts:**

**6QS-WXGQ...**

RE = 0.2 - 0.8 mm

**6QS-WXGU\*\*-HP**

RE = 0.4, 0.8 mm

**Grades:**

**BXA20**

**BXA10**

**Toolholders:**

**A-SWLXR/L...**

DCONMS =  $\varnothing$ 10 - 20 mm

**E-SWLXR/L...**

DCONMS =  $\varnothing$ 10 - 20 mm



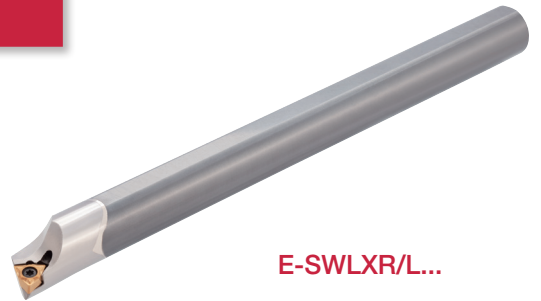
**6QS-WXGQ...**

Double-sided insert with six positive cutting edges for excellent cost-per-edge economy for reduced tool cost.



**6QS-WXGU\*\*-HP**

The HP chipbreaker provides excellent surface quality and good chip control.



**E-SWLXR/L...**



**A-SWLXR/L...**





## NEW SOLID CARBIDE BORING BARS & SLEEVE WITH 4 PERIPHERAL COOLANT JETS FOR MAXIMUM PRODUCTIVITY AND ECONOMY

ADD wear and chipping resistant **SH725** for long and predictable tool life

ชื่อ 10 ด้ามควาน

และ

ฟรี 1 ด้ามมัด

ฟรี  
ทันที!



Solid bars:

TBTR/L...

TBPR...

TBUR...

TBCR...

TBBR...

TBIR...

TBRR...

TBFR...

TBSR...

TBGR...

DMIN =  $\varnothing$ 1 - 15 mm

Grade:

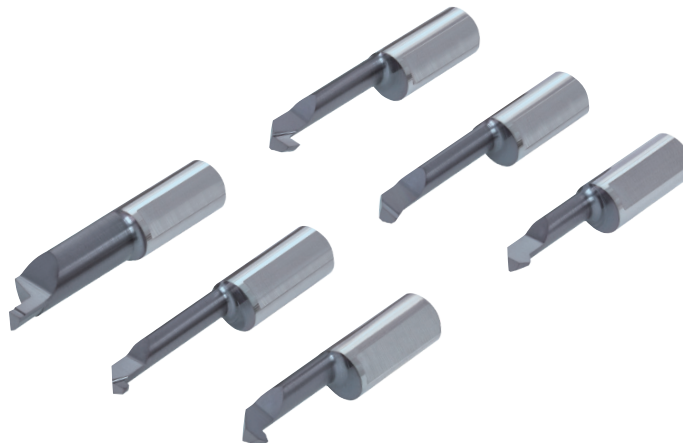
SH725

Sleeve:

JBBS\*\*-4N

DCONMS =  $\varnothing$ 12 -  $\varnothing$ 25.4 mm

DCONWS =  $\varnothing$ 4,  $\varnothing$ 7 mm



## INNOVATIVE MODULAR HEAD SYSTEM FOR SWISS MACHINES

ADD flexibility and productivity to your swiss turning operations

ซื้อ 20 เม็ดมัด

และ

ฟรี 1 หัวโมดูลาร์

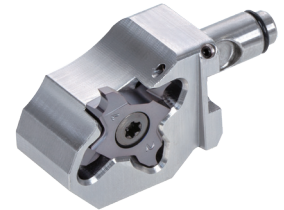
**ฟรี  
ทันที!**

ซื้อ 20 เม็ดมัด

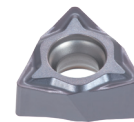
และ

ลด 1 หัวโมดูลาร์ชนิดมี  
รูนำหล่อเย็น CHP

**ลดทันที!  
50%**



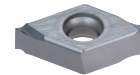
QC12\*\*Y-CHP



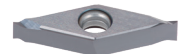
WXGU...



DXMU...



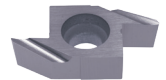
DXGU...



VXGU...



TCP...



J10ER...

### Heads:

QC12...  
QC12\*\*-CHP  
QC12\*\*-Y  
QC12\*\*-Y-CHP

### Grades:

AH725, AH7025, AH8015, NS9530  
KS05F, GT9530, J9530, J740, SH725,  
TH10

\*Promotion applicable grades depend  
on insert shape.

### Inserts:

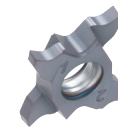
DXGU..., DXMU..., VXGU..., WXGU...  
TCL18R..., TCS18R..., TCP18R/L...  
TCT18F/R/L..., TCG18R/L..., J10ER...



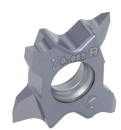
TCL...



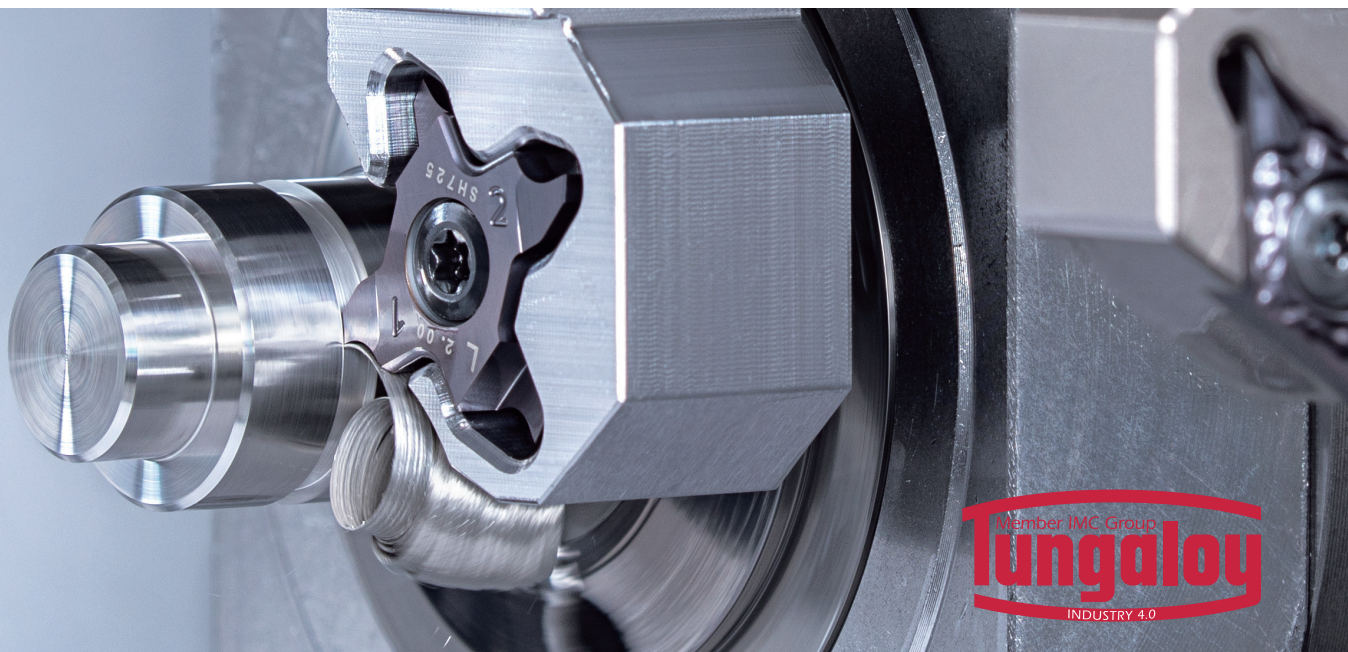
TCS...



TCG...



TCT...





## ZF AND ZM CHIPBREAKERS FOR EXCELLENT CHIP CONTROL IN PROFILING AND TURNING WITH VARYING DEPTHS

ADD small-sized turning inserts for better insert economy and incomparable performances

ชื่อ 40 เม็ดมัด

และ

ฟรี 10 เม็ดมัด

ฟรี  
ทันที!

Inserts:

CNMG0904\*\*E-ZF/ZM

DNMG1104\*\*E-ZF/ZM

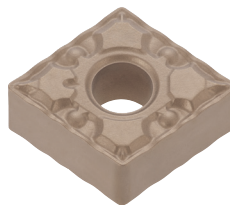
VNMG1204\*\*E-ZF/ZM

WNMG0604\*\*E-ZF/ZM

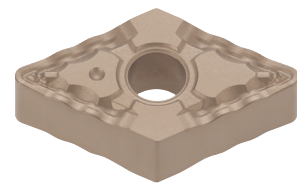
Grades:

T9215

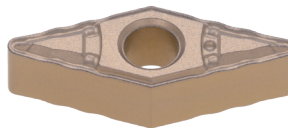
T9225



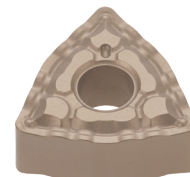
CNMG...



DNMG...



VNMG...



WNMG...



## VERSATILE HIGH-FEED MILLING CUTTER SERIES NOW OFFERS SIZE-03 UER INSERTS FOR EXOTIC MATERIALS

ADD low approach angles for longer tool life in difficult-to-cut materials

ชื่อ 10 เบ็ดมัดต่อ  
พ็อคเก็ต

และ

ฟรี 1 หัวคัตเตอร์

ฟรี  
ทันที!



**LNMU03UER...**  
Double-sided insert  
with 4 cutting edges

**Insert:**

**LNMU03UER-ML/MJ**

APMX = 0.9 mm

**Grade:**

**AH130**

**AH3225**

**AH8015**



**TXN03...**

**Bore type:**

**TXN03...**

DCX =  $\phi 40$  -  $\phi 50$  mm

**Modular type:**

**HXN03...** (with center through coolant hole)

DCX =  $\phi 16$  -  $\phi 32$  mm

**HXN03\*\*-C** (with coolant directly to the tool tips)

DCX =  $\phi 16$  -  $\phi 40$  mm

**Shank type:**

**EXN03...** (Short type, with center through coolant hole)

DCX =  $\phi 16$  -  $\phi 32$  mm

**EXN03\*\*-L** (Long type, with center through coolant hole)

DCX =  $\phi 16$  -  $\phi 32$  mm

**EXN03\*\*-C** (Short type, with coolant directly to the tool tips)

DCX =  $\phi 16$  -  $\phi 40$  mm

**EXN03\*\*-L-C** (Long type, with coolant directly to the tool tips)

DCX =  $\phi 16$  -  $\phi 40$  mm

**EXN03\*\*-N** (Short type, without coolant hole)

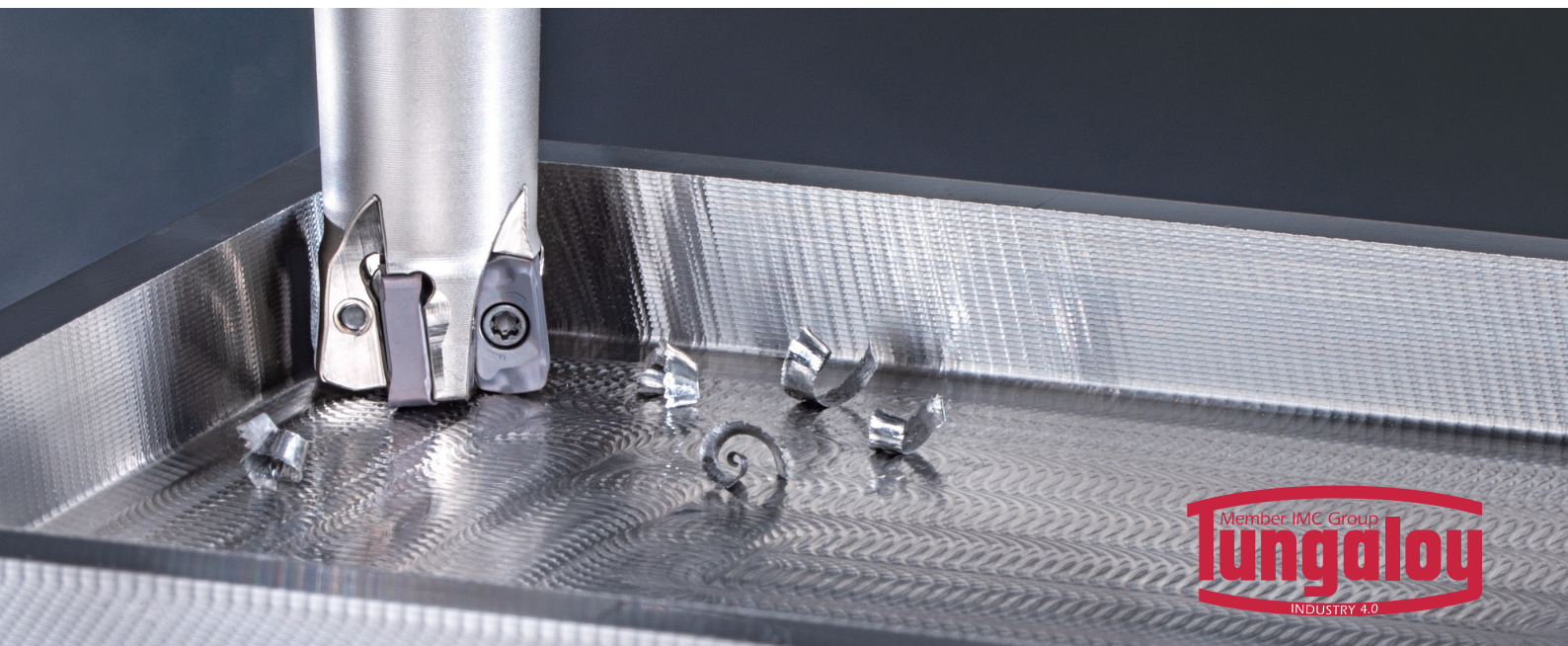
DCX =  $\phi 16$  -  $\phi 32$  mm



**HXN03...**



**EXN03...**





# HIGH PERFORMANCE AND PROFITABILITY IN HIGH-FEED MILLING OPERATIONS

ADD more cutting edges per insert to your machining operations

ซื้อ 10 เม็ดมัดต่อ  
พ็อคเก็ต

และ

ฟรี 1 หัวคัตเตอร์

ฟรี  
ทันที!



**WXMU03-MM**

Economical double-sided inserts with six cutting edges

**Insert:**

**WXMU03-MM**

APMX = 1 mm

**Grades:**

**AH3225**

**AH8015**

**Bore type:**

**TXWX03...**

DCX =  $\varnothing$ 40,  $\varnothing$ 50 mm

**Shank type:**

**EXWX03... (Short type)**

DCX =  $\varnothing$ 16 -  $\varnothing$ 32 mm

**EXWX03\*\*L (Long type)**

DCX =  $\varnothing$ 16 -  $\varnothing$ 32 mm

**Modular type:**

**HXWX03...**

DCX =  $\varnothing$ 16 -  $\varnothing$ 32 mm



**HXWX03...**



**TXWX03...**



**EXWX03...**



## NEW SIZE -04 INSERTS FOR ENHANCED SHOULDER MILLING CAPABILITY

ADD a broadened range of unique V-bottom shape inserts for higher productivity

ชื่อ 10 เบ็ดมิดต่อ  
พ็อกเก็ต

และ

ฟรี 1 หัวคัตเตอร์

ฟรี  
ทันที!

**Insert:**

AVMT04-MM

APMX = 4 mm

**Grades:**

AH120

AH3225

**Shank type:**

EPAV04... (Short type)

DC =  $\varnothing 6$  -  $\varnothing 16$  mm

EPAV04\*\*L (Long type)

DC =  $\varnothing 8$  -  $\varnothing 16$  mm



EPAV04...



AVMT04-MM

Unique V-bottom shape inserts for maximum productivity





**ALL-ROUND CUTTER WITH CENTER CUTTING CAPABILITY FOR ULTIMATE MACHINING VERSATILITY**  
**— FROM SHOULDER MILLING TO HOLE MAKING**

ADD high cost-per-edge economy with four-edged inserts

ชื่อ 10 เบริดมีดต่อ  
พ็อกเก็ต

และ

ฟรี 1 หัวคัตเตอร์

**ฟรี  
ทันที!**



**LXMU\*\*-MM**

Four total cutting edges for highest insert economy

**Insert:**

**LXMU08/10/12-MM**

APMX = 7 - 11 mm

**Grades:**

AH3225

AH8015

AH120

**Shank type:**

**EVLX08/10/12...** (Short type)

DC =  $\phi$ 16 -  $\phi$ 25 mm

**EVLX08/10/12\*\*L** (Long type)

DC =  $\phi$ 16 -  $\phi$ 26 mm

**Modular type:**

**HVLX08/10/12...**

DC =  $\phi$ 16 -  $\phi$ 25 mm



**EVLX...**



**HVLX...**





## AH3225 GRADE FOR IMPROVED MACHINING EFFICIENCY AND ECONOMY

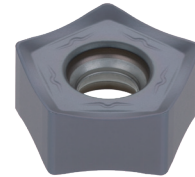
ADD long and predictable tool life with face milling cutters with economical 10 edged inserts

ชื่อ 10 เมีดมีดต่อ  
พ็อกเก็ต

และ

ฟรี 1 หัวคัตเตอร์

ฟรี  
ทันที!



PN\*\*U09...

Double sided  
pentagonal  
insert

**Inserts:**

**PNMU09-MJ**

APMX = 6.4 mm

**PNCU09\*\*-MJ/ML**

APMX = 6.4 mm

**Grade:**

**AH3225**

**Bore type:**

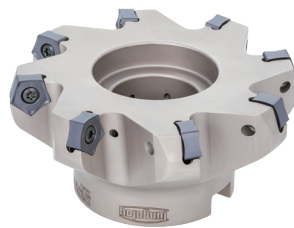
**TEN09R/L...**

DC =  $\varnothing$ 50 -  $\varnothing$ 125 mm

**Shank type:**

**EEN09...**

DC =  $\varnothing$ 32 -  $\varnothing$ 80 mm



TEN09R/L...



EEN09...





# LATEST AH3225 GRADE MAXIMIZES YOUR PRODUCTIVITY AND PROFITS IN SHOULDER MILLING

ADD exceptional reliability and long tool life in steel machining

ชื่อ 10 เบ็ดมัดต่อ  
พ็อคเก็ต

และ

ฟรี 1 หัวคัตเตอร์

ฟรี  
ทันที!



TNMU07...

TNMU12...

1st choice Versatile geometry with good surface finish

**Inserts:**

**TNMU07\*\*-MJ**

APMX = 6.5 mm

**TNMU12\*\*-MJ/NMJ**

APMX = 11 mm

**TNMU12\*\*R\*\*-MJ**

APMX = 11 mm

**TNGU12\*\*R\*\*-MJ**

APMX = 11 mm

**Grade:**

**AH3225**

**Bore type:**

**TPTN07...**

DC =  $\varnothing$ 40,  $\varnothing$ 50 mm

**TPTN12...**

DC =  $\varnothing$ 50 -  $\varnothing$ 125 mm

**Shank type:**

**EPTN07...** (Short type)

DC =  $\varnothing$ 18 -  $\varnothing$ 32 mm

**EPTN07\*\*L** (Long type)

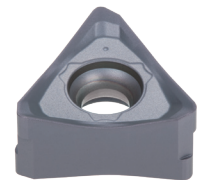
DC =  $\varnothing$ 20,  $\varnothing$ 25 mm

**EPTN12...**

DC =  $\varnothing$ 32,  $\varnothing$ 40 mm



TPTN...

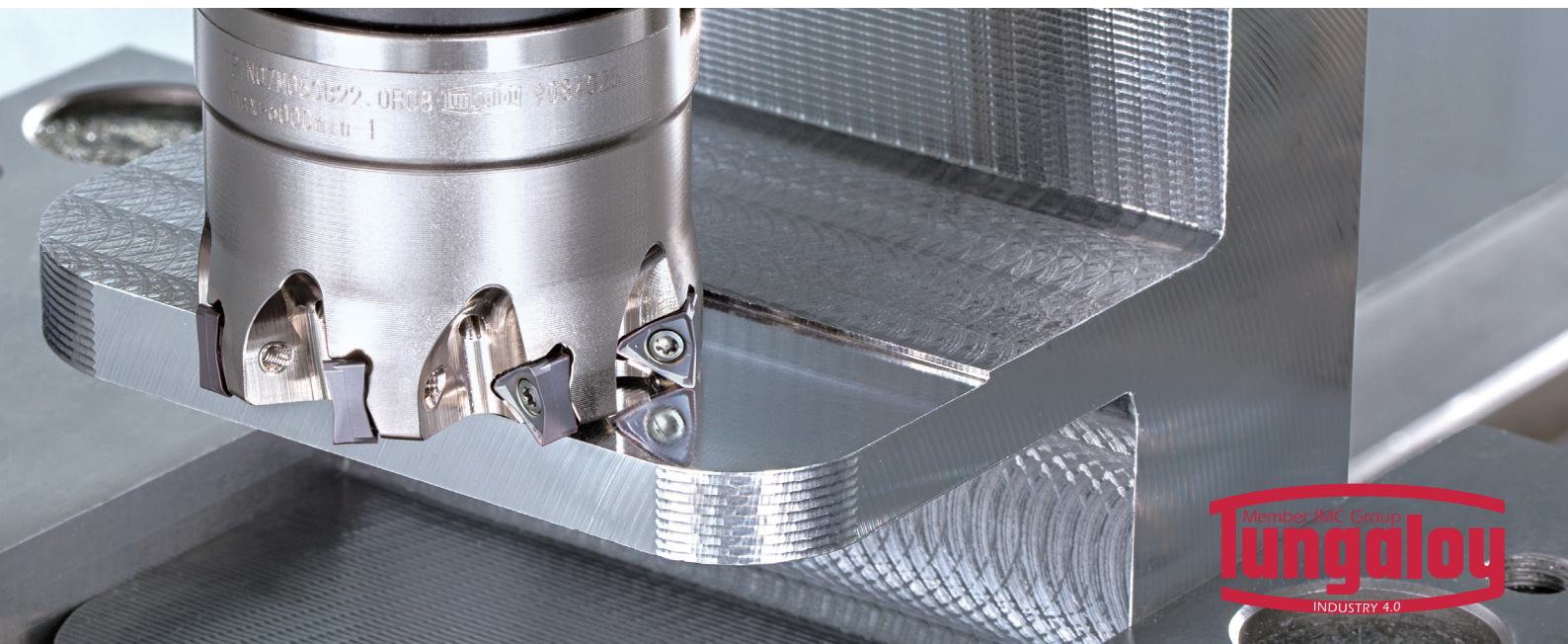


TNGU12...

For close tolerance



EPTN...



## WORLD'S SMALLEST EXCHANGEABLE HEAD DRILL SERIES

ADD superb performance in small drilling operations

<p><b>ชื่อ</b> 4 ดอกสว่าน</p> <p>และ</p> <p><b>ลด</b> 1 ด้ามสว่าน</p> <p>ในช่วง L/D (3xD)</p>	<p><b>ลดทันที!</b></p> <p><b>50%</b></p>
<p><b>ชื่อ</b> 6 ดอกสว่าน</p> <p>และ</p> <p><b>ลด</b> 1 ด้ามสว่าน</p> <p>ในช่วง L/D (5xD)</p>	<p><b>ลดทันที!</b></p> <p><b>50%</b></p>

### Drill heads:

**DMP...** (AH725)

DC = 04 - 05.9 mm

**DMC...** (AH9130)

DC = 05 - 05.9 mm

### Drill body:

**TID-R...**

L/D = 3,5

DC = 04 - 05.9 mm



**DMC**

High precision drilling head with quick centering cutting edge style

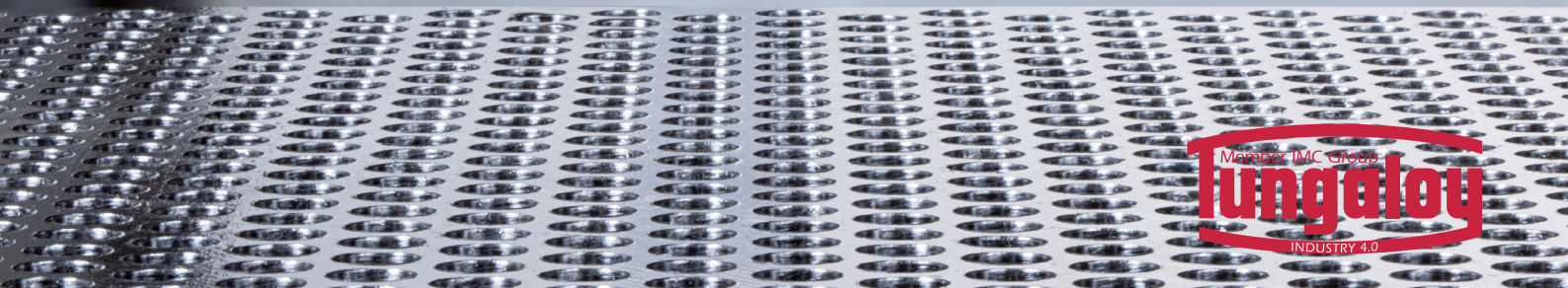


**DMP**

General purpose drilling head ideal for various drilling applications



**TID-R...**





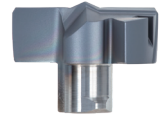
## EXCHANGEABLE HEAD DRILL SYSTEM IMPROVES PRODUCTIVITY

ADD new head geometries and innovative **AH9130** grade for excellent cutting performance and tool life. Significantly reduced tool change time thanks to simple and easy clamping system

ชื่อ	4 ดอกสว่าน	ลดทันที! <b>50%</b>
และ	ลด 1 ด้ามสว่าน ในช่วง L/D (3.5xD)	
ชื่อ	6 ดอกสว่าน	ลดทันที! <b>50%</b>
และ	ลด 1 ด้ามสว่าน ในช่วง L/D (6xD)	
ชื่อ	8 ดอกสว่าน	ลดทันที! <b>50%</b>
และ	ลด 1 ด้ามสว่าน ในช่วง L/D (8xD)	



**DMH**  
General purpose head with enhanced cutting edge



**DMF**  
180° flat edges for counterboring and flat bottoms

\*Promotion applicable for DMH and DMF heads only

**Drill head:**

**DMH...**

DC = ø10 - ø19.5 mm

**DMF...**

DC = ø6 - ø25.9 mm

**Grade:**

**AH9130**

**Drill bodies:**

**TID-F...**

L/D = 1.5, 3, 5, 8

DC = ø6 - ø25.9 mm

**TID-R...**

L/D = 3.5, 6, 8

DC = ø6 - ø19.9 mm

**TIDC...**

L/D = 3, 5

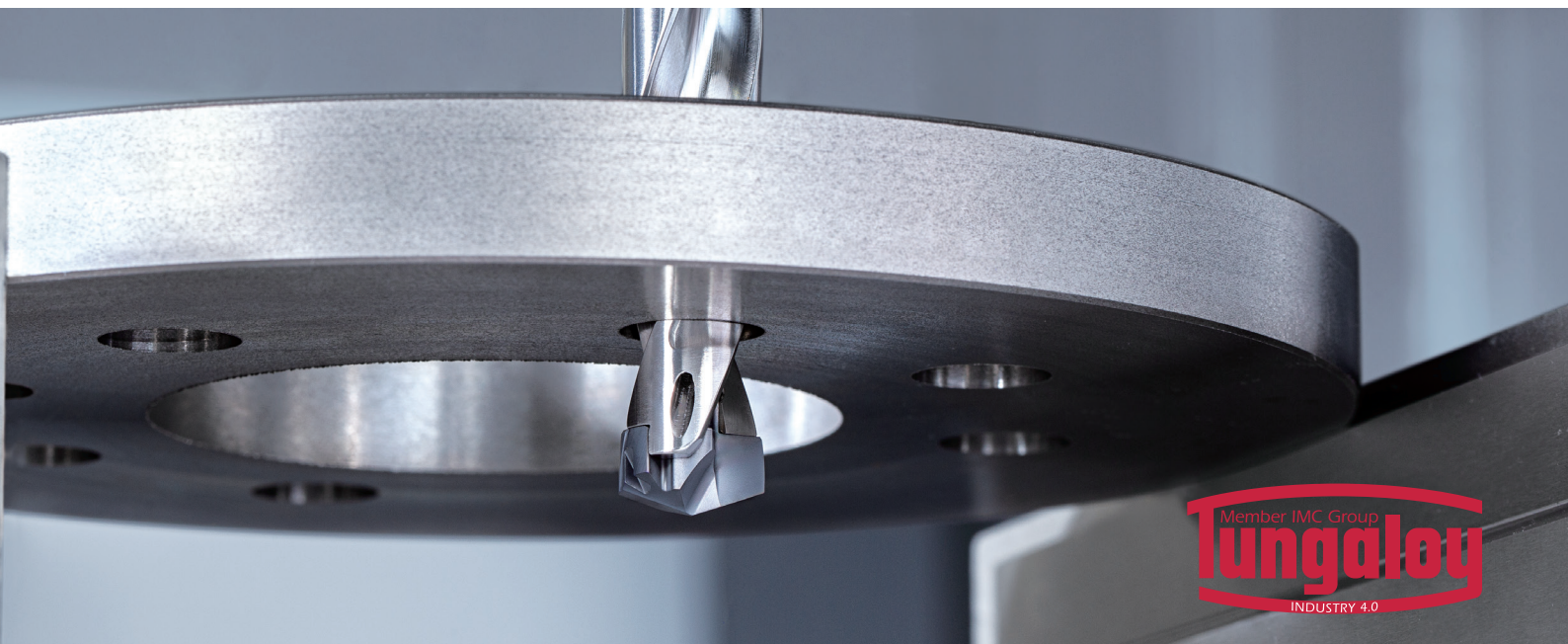
DC = ø7.5 - ø19.9 mm



TID-F...

TID-R...

TIDC...



## 4-FLUTE SOLID DRILLS FOR EXCEPTIONAL PERFORMANCE

ADD 4 cutting edges for highly productive drilling and longer tool life

ชื่อ 2 ดอกส่วน

และ

ฟรี 1 ดอกส่วน

ฟรี  
ทันที!

Drill

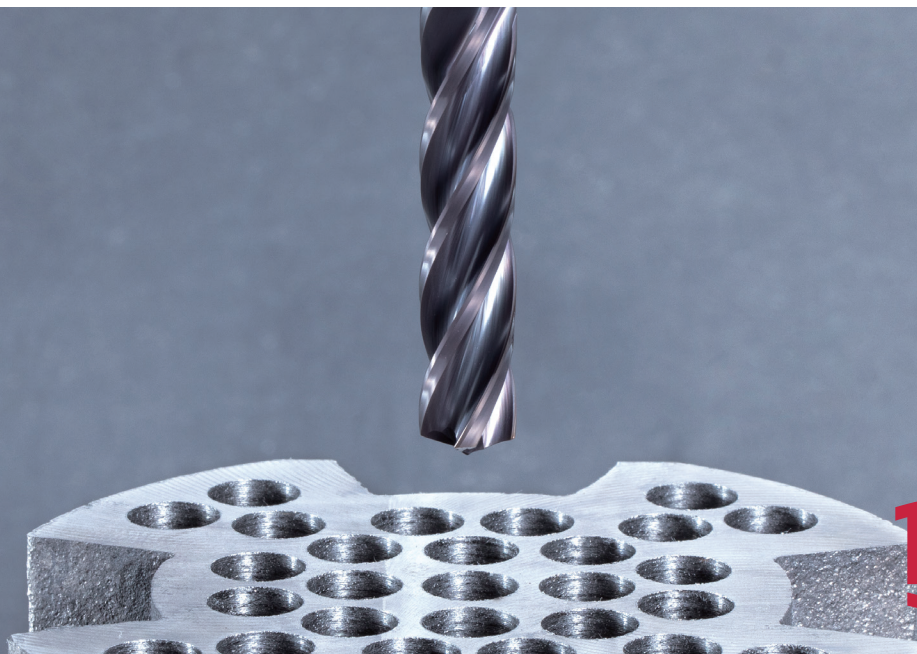
DSQ...

L/D = 3,5

DC =  $\varnothing 6$  -  $\varnothing 16$  mm

Grade:

AH9130





# เครือข่ายทั่วโลก



## **Tungaloy Corporation (Head office)**

11-1 Yoshima-Kogyodanchi  
Iwaki-city, Fukushima 970-1144 Japan  
Phone: +81-246-36-8501  
Fax: +81-246-36-8542  
www.tungaloy.co.jp

## **Tungaloy America, Inc.**

3726 N Ventura Drive  
Arlington Heights, IL 60004, U.S.A.  
Phone: +1-888-554-8394  
Fax: +1-888-554-8392  
www.tungaloy.com/us

## **Tungaloy Canada**

432 Elgin St. Unit 3  
Brantford, Ontario N3S 7P7, Canada  
Phone: +1-519-758-5779  
Fax: +1-519-758-5791  
www.tungaloy.com/ca

## **Tungaloy de Mexico S.A.**

C Los Arellano 113,  
Parque Industrial Siglo XXI  
Aguascalientes, AGS, Mexico 20290  
Phone: +52-449-929-5410  
Fax: +52-449-929-5411  
www.tungaloy.com/mx

## **Tungaloy do Brasil Ltda.**

Avd. Independencia N4158 Residencial Flora  
13280-000 Vinhedo, São Paulo, Brasil  
Phone: +55-19-38262757  
Fax: +55-19-38262757  
www.tungaloy.com/br

## **Tungaloy Germany GmbH**

An der Alten Ziegelei 1  
D-40789 Monheim, Germany  
Phone: +49-2173-90420-0  
Fax: +49-2173-90420-19  
www.tungaloy.com/de

## **Tungaloy France S.A.S.**

ZA Courtaboeuf - Le Rio  
1 rue de la Terre de feu  
F-91952 Courtaboeuf Cedex, France  
Phone: +33-1-6486-4300  
Fax: +33-1-6907-7817  
www.tungaloy.com/fr

## **Tungaloy Italia S.r.l.**

Via E. Andolfato 10  
I-20126 Milano, Italy  
Phone: +39-02-252012-1  
Fax: +39-02-252012-65  
www.tungaloy.com/it

## **Tungaloy Czech s.r.o.**

Turanka 115  
CZ-627 00 Brno, Czech Republic  
Phone: +420-532 123 391  
Fax: +420-532 123 392  
www.tungaloy.com/cz

## **Tungaloy Ibérica S.L.**

C/Miquel Servet, 43B, Nau 7  
Pol. Ind. Bufalvent  
ES-08243 Manresa (BCN), Spain  
Phone: +34 93 113 1360  
Fax: +34 93 876 2798  
www.tungaloy.com/es

## **Tungaloy Scandinavia AB**

Bultgatan 38  
442 40 Kungälv, Sweden  
Phone: +46-462119200  
Fax: +46-462119207  
www.tungaloy.com/se

## **Tungaloy Rus, LLC**

Andropova avenue, h.18/7,  
11 floor, office 3, 115432,  
Moscow, Russia  
Phone: +7-499-683-01-80  
Fax: +7-499-683-01-81  
www.tungaloy.com/ru

## **Tungaloy Polska Sp. z o.o.**

Ul. Irysowa 1, 55-040 Bielany  
Wrocławskie, Poland  
Phone: +48 607 907 237  
www.tungaloy.com/pl

## **Tungaloy U.K. Ltd**

Gallan Park, Watling Street,  
Cannock, WS110XG, UK  
Phone: +44 121 4000 231  
Fax: +44 121 270 9694  
www.tungaloy.com/uk

## **Tungaloy Hungary Kft**

Erzsébet királyné útja 125  
H-1142 Budapest, Hungary  
Phone: +36 1 781-6846  
Fax: +36 1 781-6866  
www.tungaloy.com/hu

## **Tungaloy Turkey**

Serifali Mah. bayraktar Bulvari Kule Sk. No:26  
34775 Umraniye / Istanbul / Turkey  
Phone: +90 216 540 04 67  
Fax: +90 216 540 04 87  
www.tungaloy.com/tr

## **Tungaloy Benelux b.v.**

Tjalk 70  
NL-2411 NZ Bodegraven, Netherlands  
Phone: +31 172 630 420  
Fax: +31 172 630 429  
www.tungaloy.com/nl

## **Tungaloy Croatia**

Ulica bana Josipa Jelačića 87,  
10430, Samobor, Croatia  
Phone: +385 1 3326 604  
Fax: +385 1 3327 683  
www.tungaloy.com/hr

## **Tungaloy Cutting Tool (Shanghai) Co.,Ltd.**

Rm No 401 No.88 Zhabei  
Jiangchang No.3 Rd  
Shanghai 200436, China  
Phone: +86-21-3632-1880  
Fax: +86-21-3621-1918  
www.tungaloy.com/cn

## **Tungaloy Cutting Tools (Taiwan) Co.,Ltd.**

9F. No.293, Zhongyang Rd,  
Xinzhuang Dist, New Taipei City,  
24251 Taiwan  
Phone: +886-2-8521-9986  
Fax: +886-2-8521-8935  
www.tungaloy.com/tw

## **Tungaloy Cutting Tools (Thailand) Co.,Ltd.**

Interlink tower 4th Fl.  
1858/5-7 Bangna-Trad Road  
km.5 Bangna, Bangna, Bangkok 10260  
Thailand  
Phone: +66-2-751-5711  
Fax: +66-2-751-5715  
www.tungaloy.com/th

## **Tungaloy Singapore (Pte.), Ltd.**

62 Ubi Road 1, #06-11 Oxley BizHub 2  
Singapore 408734  
Phone: +65-6391-1833  
Fax: +65-6299-4557  
www.tungaloy.com/sg

## **Tungaloy Vietnam**

LE04.38, Lexington Residence  
67 Mai Chi Tho St., Dist. 2,  
Ho Chi Minh City, Vietnam  
Phone: +84-2837406660  
www.tungaloy.com/sg

## **Tungaloy India Pvt. Ltd.**

One International Center,  
Unit # 902-A, 9th Floor,  
Tower 1, Senapati Bapat Marg,  
Elphinstone Road (West),  
Mumbai -400013, India  
Phone: +91-22-6124-8804  
Fax: +91-22-6124-8899  
www.tungaloy.com/in

## **Tungaloy Korea Co., Ltd**

#1312, Byucksan Digital Valley 5-cha  
Beotkkot-ro 244, Geumcheon-gu  
153-788 Seoul, Korea  
Phone: +82-2-2621-6161  
Fax: +82-2-6393-8952  
www.tungaloy.com/kr

## **Tungaloy Malaysia Sdn Bhd**

50 K-2, Kelana Mall, Jalan SS6/14  
Kelana Jaya, 47301  
Petaling Jaya, Selangor Darul Ehsan  
Malaysia  
Phone: +603-7805-3222  
Fax: +603-7804-8563  
www.tungaloy.com/my

## **Tungaloy Australia Pty Ltd**

Unit 68 1470 Ferntree Gully Road  
Knoxfield 3180 Victoria, Australia  
Phone: +61-3-9755-8147  
Fax: +61-3-9755-6070  
www.tungaloy.com/au

## **PT. Tungaloy Indonesia**

Kompleks Grand Wisata Block AA-10  
No.3-5 Cibitung  
Bekasi 17510, Indonesia  
Phone: +62-21-8261-5808  
Fax: +62-21-8261-5809  
www.tungaloy.com/id



Interlink tower 4th Fl.  
1858/5-7 Bangna-Trad Road  
km.5 Bangna, Bangna, Bangkok 10260,Thailand

[www.tungaloy.com/th](http://www.tungaloy.com/th)

Distributed by:



 FIND US ON THE CLOUD!  
[machiningcloud.com](http://machiningcloud.com)

Jan. 2022 (TJ)