



# SOLIDFIXWRENCH

Tungaloy Report No. 570-G



## Features and benefits of the new key wrench

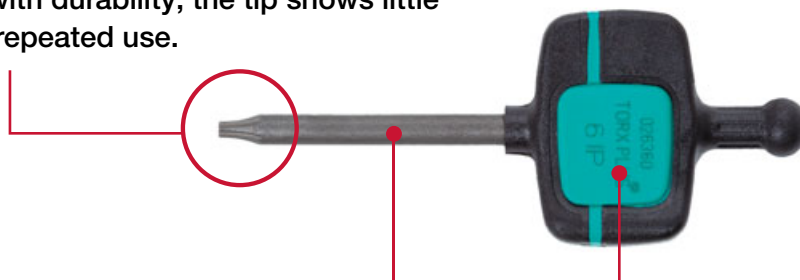
### - Ease-of-use

Designed for precision, durability, and rigidity, the key shaft provides easy handling and long service life.

### - Extended service life of screws

The key also helps extend service life of screws by preventing stripped screws and eliminating the risk of cam-out.

- Designed with precision, the tip allows for a full engagement with a screw head.
- Designed with durability, the tip shows little wear after repeated use.



A thick shaft that fully transfers the driving torque.

Ergonomic grip design that can prevent excessive torque from being applied to the screw.

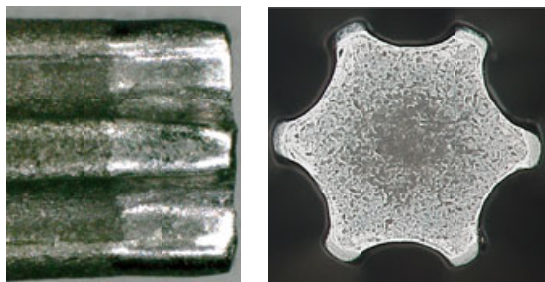
## Comparison of driver tip deformations

The tests were conducted by repeatedly tightening/loosening a Torx Plus® 6IP insert screw to compare the amount of tip deformation vs. competitor's key wrench.

### SOLIDFIXWRENCH

Key wrench used: IP-6DF

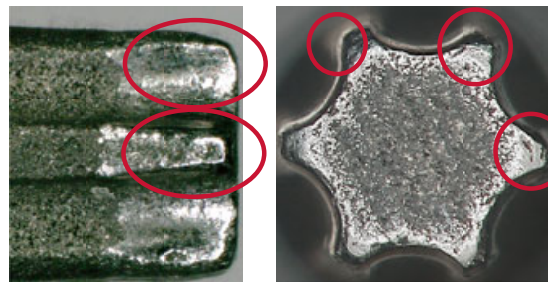
After conducting 940 times



✓ Still can be continued

Conventional

After conducting 400 times



✗ Excessive deformation

### WRENCH

Ex.

**IP**

**6DF**

1

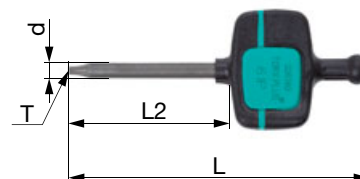
2

1 Torx Plus® IP screw

2 Tip size + Double Flag



Dedicated to Torx Plus® screw



Designation	T	L	L2	d
IP-6DF	6IP	62	33	3
IP-7DF	7IP	62	33	3



**tungaloy.com**

follow us at:

facebook.com/tungaloyjapan

twitter.com/tungaloyjapan

www.youtube.com/tungaloycorporation

Distributed by:



Tungaloy APP & SNS

FIND US ON THE CLOUD!  
machiningcloud.com



AS9100 Certified  
78006  
2015.11.04  
ISO 14001 Certified  
EC97J1123  
1997.11.26