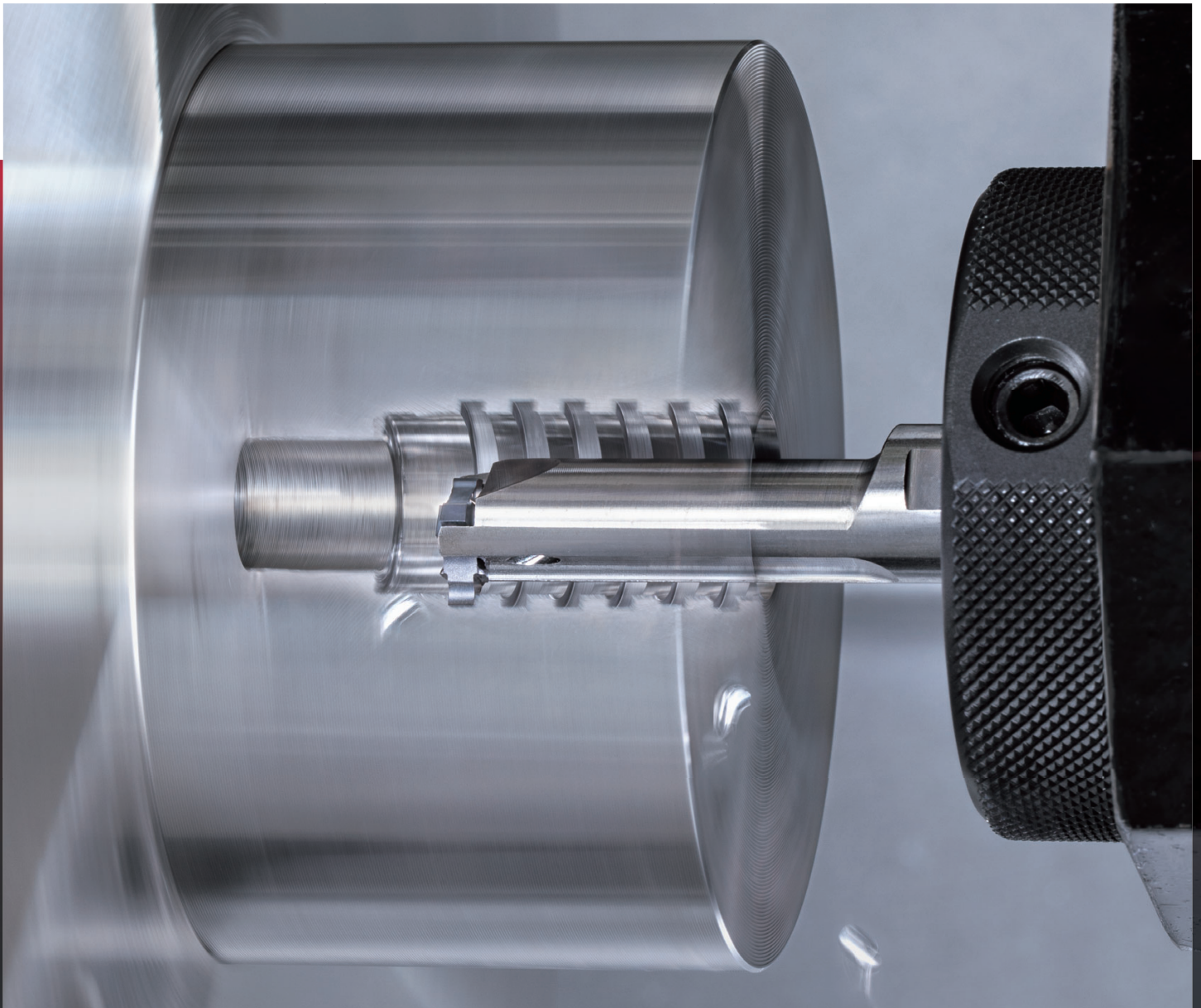


Internal grooving tool

ADDINTERNAL
CUT

Tungaloy Report No. 544S1-US

Expansion of **new insert size and widths for broad internal grooving applications range**





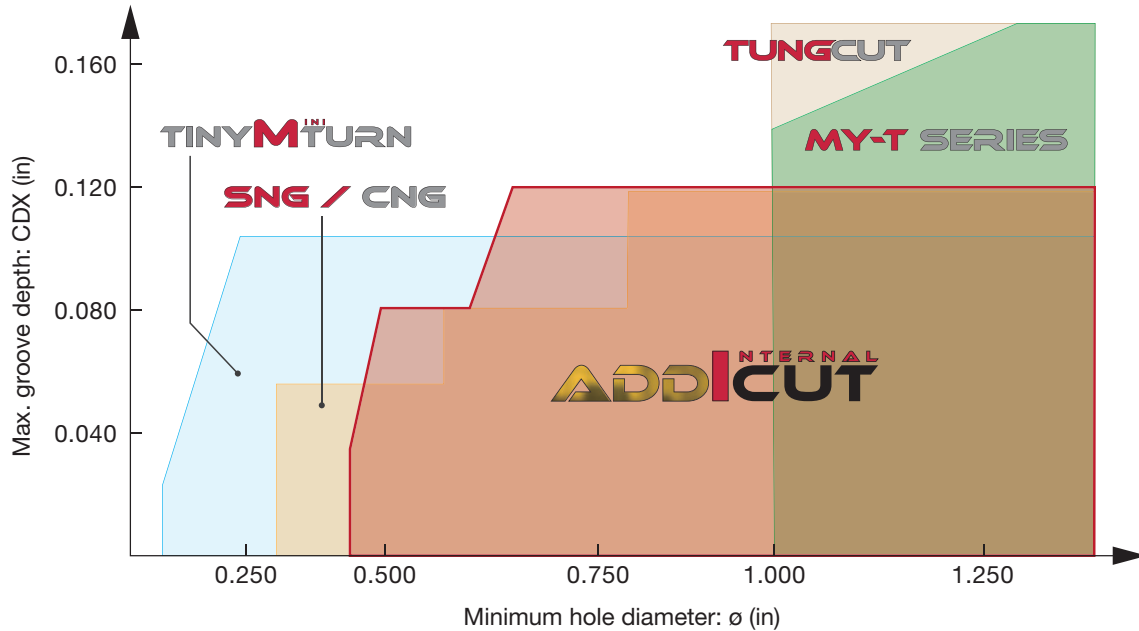
For more information

New



TCIG...

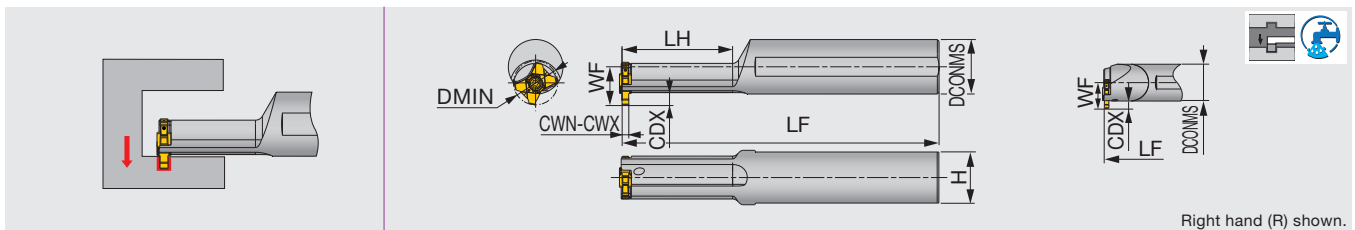
New TCIG12 insert enables up to 0.118" groove depth
 CW = 0.059" - 0.118"



HOLDER

A/E-STCIR/L

Internal grooving toolholder



Inch	Material	CWN	CWX	DMIN	DCONMS	LH	LF	WF	H	Insert	Torque*
A08-STCIR/L10-D07U	Steel	0.059	0.118	0.438	0.500	0.984	4.000	0.339	0.475	TCIG10...	0.74
A08-STCIR/L10-D08U	Steel	0.059	0.118	0.500	0.500	1.220	4.000	0.339	0.475	TCIG10...	0.74
E08-STCIR/L10-D10U	Carbide	0.059	0.118	0.625	0.500	-	5.000	0.339	0.475	TCIG10...	0.74
New A10-STCIR/L12-D09U	Steel	0.059	0.118	0.563	0.625	1.299	4.500	0.441	0.600	TCIG12...	0.96
New A10-STCIR/L12-D11U	Steel	0.059	0.118	0.688	0.625	1.614	4.500	0.441	0.600	TCIG12...	0.96
New E10-STCIR/L12-D13U	Carbide	0.059	0.118	0.813	0.625	-	6.000	0.441	0.600	TCIG12...	0.96

Torque: Recommended clamping torque: lbs-ft

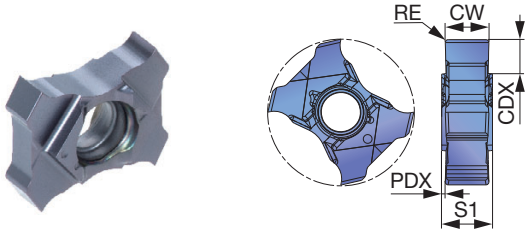
SPARE PARTS



Designation	Clamping screw
A/E-STCIR10-...	CSTB-2.2L053DR
A/E-STCIR10-...	CSTB-2.2L053DL
A/E-STCIR12-...	CSTB-2.5L054DR
A/E-STCIR12-...	CSTB-2.5L054DL

INSERT

TCIG



P	Steel	★						
M	Stainless	★						
K	Cast iron	★						
N	Non-ferrous							
S	Superalloys	★						
H	Hard materials							

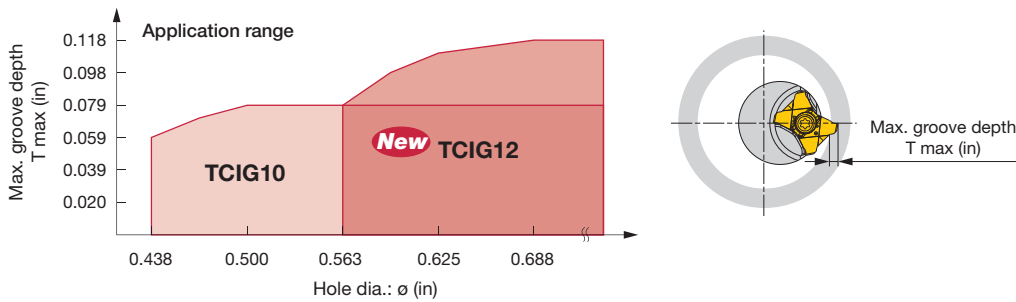
Designation	CW±0.001	RE	Coated						CDX	S1	PDX
			AH725								
TCIG10-150-010	0.059	0.004	●						0.079	0.138	0.039
TCIG10-200-010	0.079	0.004	●						0.079	0.138	0.030
TCIG10-250-020	0.098	0.008	●						0.079	0.138	0.020
New TCIG10-300-020	0.118	0.008	●						0.079	0.138	0.010
New TCIG12-150-010	0.059	0.004	●						0.118	0.138	0.039
New TCIG12-200-020	0.079	0.008	●						0.118	0.138	0.030
New TCIG12-250-020	0.098	0.008	●						0.118	0.138	0.020
New TCIG12-300-020	0.118	0.008	●						0.118	0.138	0.010

● : New product
● : Line up

Note: Shallower groove depths (T max) for smaller bores

Maximum groove depths (T max) for TCIG10 inserts are smaller than the CDX value shown above when the grooving bore diameter is < 0.500"; and for TCIG12, when the bore diameter is < 0.688".

See the chart below for T max values in relation to the given bore diameter.



Tungaloy America, Inc.

3726 N Ventura Drive, Arlington Heights, IL 60004, U.S.A.

Inside Sales: +1-888-554-8394

Technical Support: +1-888-554-8391

Fax: +1-888-554-8392

www.tungaloy.com/us

Tungaloy Canada

432 Elgin St. Unit 3, Brantford, Ontario N3S 7P7, Canada

Phone: +1-519-758-5779 Fax: +1-519-758-5791

www.tungaloy.com/ca

Tungaloy de Mexico S.A.

C Los Arellano 113, Parque Industrial Siglo XXI

Aguascalientes, AGS, Mexico 20290

Phone: +52-449-929-5410 Fax: +52-449-929-5411

www.tungaloy.com/mx



Scan for instant
web access



www.tungaloy.com/us

follow us at:

facebook.com/tungaloyamerica

instagram.com/tungaloyamerica

linkedin.com/company/tungaloy-america

To see Tungaloy products in action visit:



www.youtube.com/tungaloycorporation

Distributed by:



FIND US ON THE CLOUD!
machiningcloud.com



Jun. 2022 (TJ)