

Exchangeable head turning tool system for Swiss machines

MODUM^{INI}TURN

Tungaloy Report No. 541S2-G

Expanded lineups of **parting and profiling heads, as well as shank options** for extensive application coverage

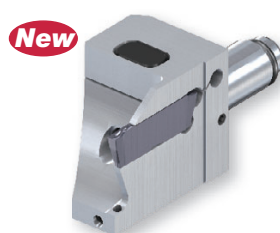




Exchangeable head turning tool system for Swiss machines

Expansion of high-pressure through-coolant head series

Introducing new heads for parting, profiling and back turning applications with high-pressure through-coolant supply



TUNG CUT

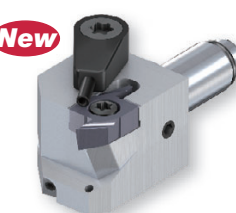
Parting

CW = 1.2 - 2 mm



MINI TURN

O.D. profiling

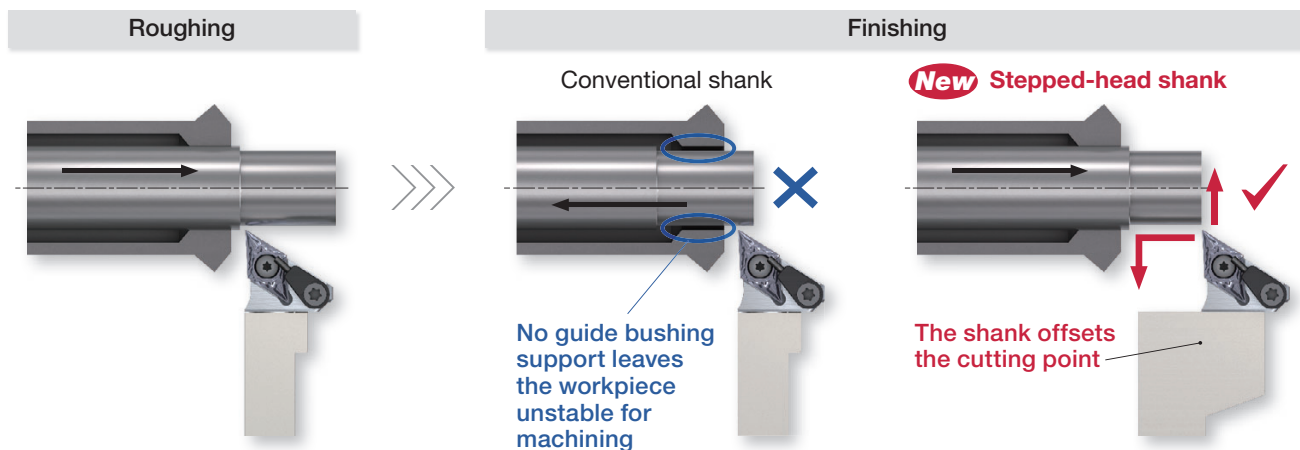


J-SERIES

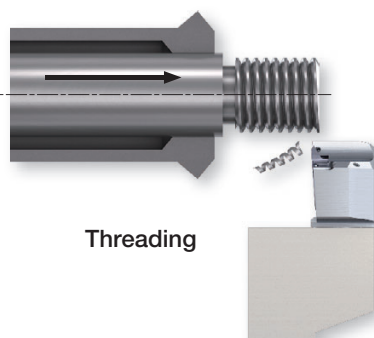
Back turning

New stepped-head shanks

Allows finishing operation to be performed after roughing operation without returning the workpiece back into the guide bushing where no support is provided for the workpiece.



Prevents chips from entering the guide bushing during thread machining.



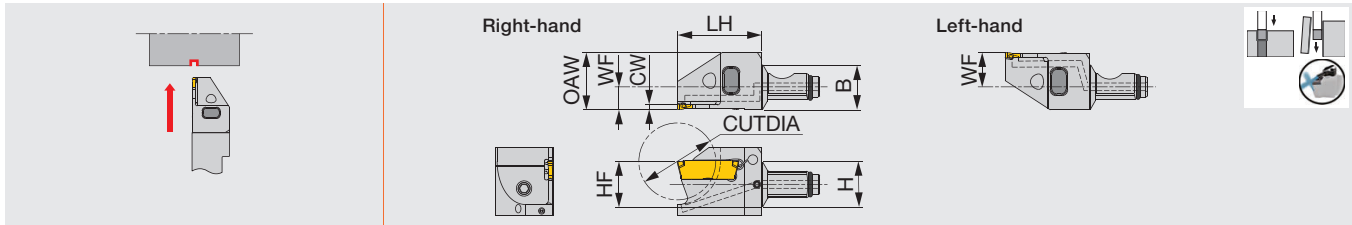
Threading

MODULAR HEADS

QC12-JTTER/L-CHP

TUNGCUT

Modular head for external grooving and parting, with high pressure coolant capability



Designation	CW	Seat size	CUTDIA	H	B	LH	HF	WF ⁽¹⁾	OAW	Torque*
QC12-JTTER/L1.2D20-CHP	1.2	0.9	20	12	12	22	12	6/9	15	1.5
QC12-JTTER/L1.4D20-CHP	1.4	1	20	12	12	22	12	6/9	15	1.5
QC12-JTTER/L2D20-CHP	2	2	20	12	12	22	12	6/9	15	1.5

(1) "WF" value is calculated with groove width "CW" shown in the table. The first value before "/" indicates the WF for the right-hand holder and the second value after "/" for the left-hand holder.
Torque*: Recommended clamping torque (N·m)

Insert



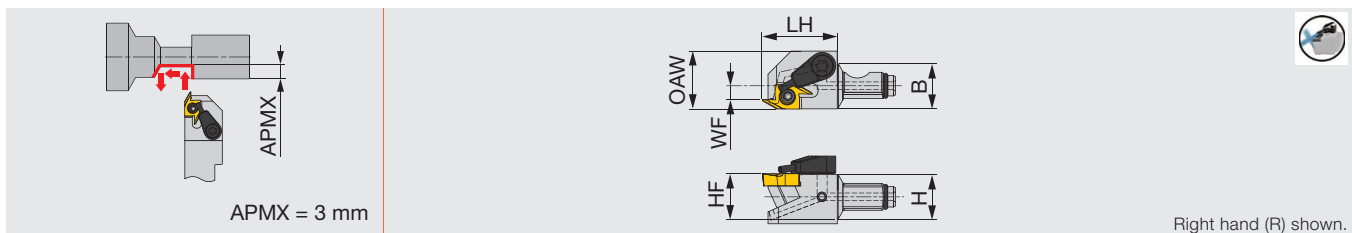
SPARE PARTS

Designation	Clamping screw	Clamping pin	Wrench	O-ring
QC12-JTTER/L...	SSM3.5x0.35	PIN-SL-TC	P-2F	ORSS-0454.5X1.0NBR70

QC12-JSEGR-CHP

J-SERIES

Screw-on modular head for back turning, with high pressure coolant capability



Designation	H	B	LH	HF	WF	OAW	Insert	Torque*
QC12-JSEGR10-CHP	12	12	19.5	12	3.5	15	J10ER...	1.2

Torque*: Recommended clamping torque (N·m)

Insert

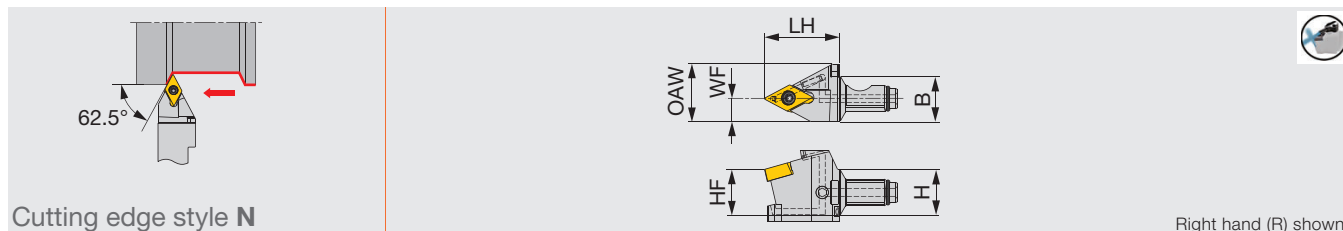


SPARE PARTS

Designation	Clamping screw	Coolant unit	Wrench	O-ring
QC12-JSEGR10-CHP	CSTB-2.5	S-CU-CHP	T-8F	ORSS-0454.5X1.0NBR70

QC12-JSDNXR-CHP

Screw-on modular head with 62.5° approach angle, for DX*U inserts, with high pressure coolant capability



Cutting edge style N

Right hand (R) shown.

Designation	H	B	LH	HF	WF	OAW	RE**	Insert	Torque*
QC12-JSDNXR07-CHP	12	12	19.5	12	6	15	0.2	DX*U0703**L...	0.9

Use right-hand toolholders (R) with left-hand inserts (L).
Torque*: Recommended clamping torque (N·m)
RE**: Standard corner radius

Insert

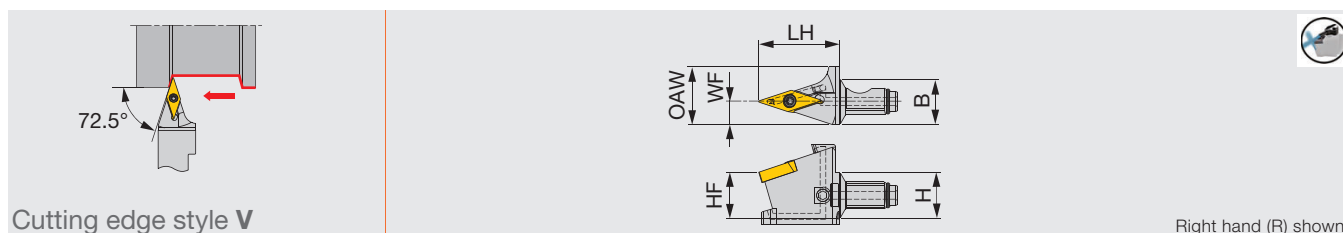


SPARE PARTS

Designation	Clamping screw	Wrench	O-ring
QC12-JSDNXR07-CHP	SR34-514	T-7F	ORSS-0454.5X1.0NBR70

QC12-JSVVXR-CHP

Screw-on modular head with 72.5° approach angle, for VXGU inserts, with high pressure coolant capability



Cutting edge style V

Right hand (R) shown.

Designation	H	B	LH	HF	WF	OAW	RE**	Insert	Torque*
QC12-JSVVXR09-CHP	12	12	21	12	6	15	0.2	VXGU09T2**L...	0.9

Use right-hand toolholders (R) with left-hand inserts (L).
Torque*: Recommended clamping torque (N·m)
RE**: Standard corner radius

Insert



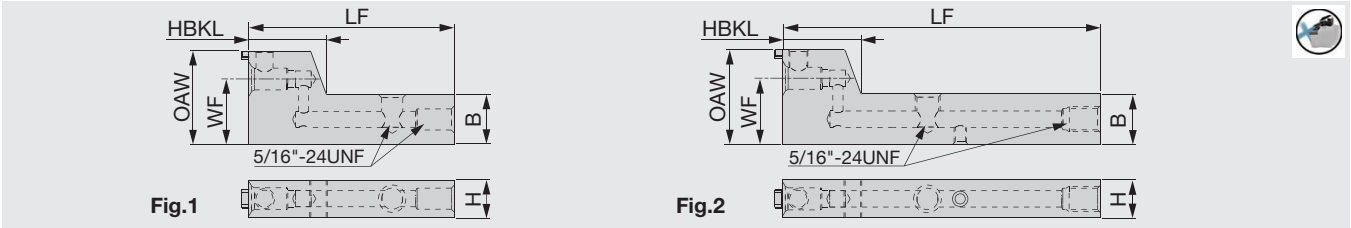
SPARE PARTS

Designation	Clamping screw	Wrench	O-ring
QC12-JSVVXR09-CHP	SR34-508	T-7F	ORSS-0454.5X1.0NBR70

SHANK







QC-1216-F15-CHP

Stepped-head shank for modular heads, with high pressure coolant capability



Designation	H	B	LF	WF	HBKL	OAW	Torque*	Fig.
QC-1216F-F15-CHP	12	16	65	21	25	30	3	1
QC-1216X-F15-CHP ⁽¹⁾	12	16	100	21	25	30	3	2

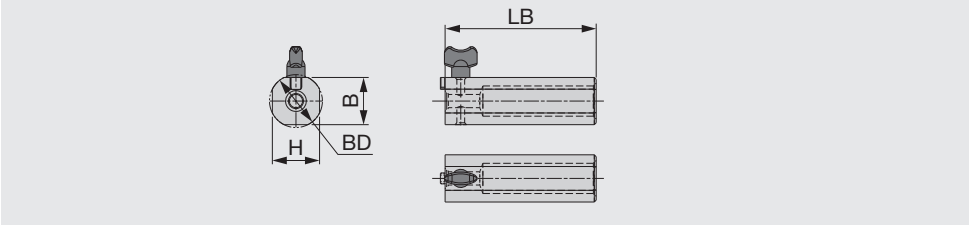
(1) Compatible to the direct internal coolant supply system without the use of external coolant hose.
QC12 heads only can be mounted on these shanks.
Torque*: Recommended clamping torque (N·m)

Designation	 Clamping screw	 Wrench	 Coolant plug	 Wrench	 DirectJet plug	 Wrench
QC-1216F-F15-CHP	SRM6X0.5-26977	P-3	SR5/16UNFTL360	P-4	-	-
QC-1216X-F15-CHP	SRM6X0.5-26977	P-3	SR5/16UNFTL360	P-4	SSHM4-6-TB	P-2

ACCESSORY

QC-12D28EXC

Modular head holder for insert change



Designation	BD	LB	H	B
QC-12D28EXC	28	80	25	25

Note: This is a dedicated modular-head holder designed to facilitate insert changes. Do not use this holder for machining as it may cause damages to tool, workpiece, machine, and possible human injury.

SPARE PARTS

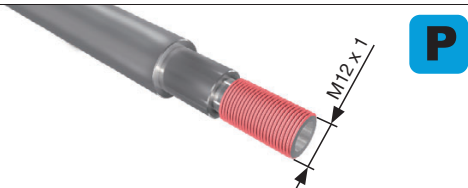


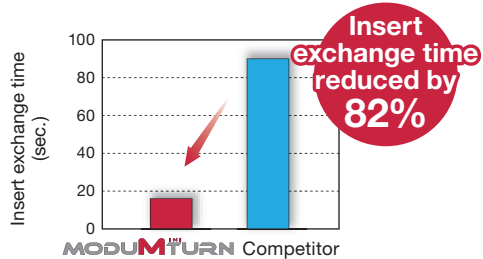


Designation	Fixing screw
QC-12D28EXC	KNOBM5X10



ModuMini-Turn modular heads are small. When it is difficult to change inserts while holding the modular head with fingers, use the dedicated holder to facilitate insert changes.

PRACTICAL EXAMPLES

Workpiece type		Ball screw shaft	Part for camera
Shank		QC-1216X-F15-CHP	QC-1212X-CHP
Head		QC12-STCR18-CHP	QC12-JTTEL1.2D20-CHP
Insert		TCT18FR-60A-005	DGS1.2-003
Grade		SH725	AH725
Workpiece material		S55C / C55	SUS303 / X10CrNiS18-9
			
Cutting conditions	Cutting speed : Vc (m/min)	60	45
	Feed : f (mm/rev)	1 (pitch)	0.03
	Machining	Threading (M12 x 1)	Parting-off (CW = 1.2 mm)
	Coolant	Wet	Wet
Results		 <p>Conventional MODUMTMTURN</p> <p>The use of stepped-head shank prevented chips from entering the inside of the guide bushing, eliminating the generation of part scraps.</p>	 <p>Insert exchange time (sec.)</p> <p>MODUMTMTURN Competitor</p> <p>Thanks to ModuMini-Turn quick change system, insert change time was reduced by 82%.</p>

Tungaloy Corporation (Head office)

11-1 Yoshima-Kogyodanchi
Iwaki-city, Fukushima 970-1144 Japan
Phone: +81-246-36-8501
Fax: +81-246-36-8542
www.tungaloy.co.jp

Tungaloy America, Inc.

3726 N Ventura Drive
Arlington Heights, IL 60004, U.S.A.
Phone: +1-888-554-8394
Fax: +1-888-554-8392
www.tungaloy.com/us

Tungaloy Canada

432 Elgin St. Unit 3
Brantford, Ontario N3S 7P7, Canada
Phone: +1-519-758-5779
Fax: +1-519-758-5791
www.tungaloy.com/ca

Tungaloy de Mexico S.A.

C. Los Arellano 113,
Parque Industrial Siglo XXI
Aguascalientes, AGS, Mexico 20290
Phone: +52-449-929-5410
Fax: +52-449-929-5411
www.tungaloy.com/mx

Tungaloy do Brasil Ltda.

Avd. Independência N4158 Residencial Flora
13280-000 Vinhedo, São Paulo, Brasil
Phone: +55-19-38262757
Fax: +55-19-38262757
www.tungaloy.com/br

Tungaloy Germany GmbH

An der Alten Ziegelei 1
D-40789 Monheim, Germany
Phone: +49-2173-90420-0
Fax: +49-2173-90420-19
www.tungaloy.com/de

Tungaloy France S.A.S.

ZA Courtaboeuf - Le Rio
1 rue de la Terre de feu
F-91952 Courtaboeuf Cedex, France
Phone: +33-1-6486-4300
Fax: +33-1-6907-7817
www.tungaloy.com/fr

Tungaloy Italia S.r.l.

Via E. Andolfato 10
I-20126 Milano, Italy
Phone: +39-02-252012-1
Fax: +39-02-252012-65
www.tungaloy.com/it

Tungaloy Czech s.r.o.

Turanka 115
CZ-627 00 Brno, Czech Republic
Phone: +420-532 123 391
Fax: +420-532 123 392
www.tungaloy.com/cz

Tungaloy Ibérica S.L.

C/Miquel Servet, 43B, Nau 7
Pol. Ind. Bufalvent
ES-08243 Manresa (BCN), Spain
Phone: +34 93 113 1360
Fax: +34 93 876 2798
www.tungaloy.com/es

Tungaloy Scandinavia AB

Bultgatan 38
442 40 Kungälv, Sweden
Phone: +46-462119200
Fax: +46-462119207
www.tungaloy.com/se

Tungaloy Rus, LLC

Andropova avenue, h.18/7,
11 floor, office 3, 115432,
Moscow, Russia
Phone: +7-499-683-01-80
Fax: +7-499-683-01-81
www.tungaloy.com/ru

Tungaloy Polska Sp. z o.o.

Ul. Irysowa 1, 55-040 Bielany
Wrocławskie, Poland
Phone: +48 607 907 237
www.tungaloy.com/pl

Tungaloy U.K. Ltd

Gallan Park, Watling Street,
Cannock, WS110XG, UK
Phone: +44 121 4000 231
Fax: +44 121 270 9694
www.tungaloy.com/uk

Tungaloy Hungary Kft

Erzsébet királyné útja 125
H-1142 Budapest, Hungary
Phone: +36 1 781-6846
Fax: +36 1 781-6866
www.tungaloy.com/hu

Tungaloy Turkey

Serifali Mah.bayraktar Bulvari Kule Sk. No:26
34775 Umraniye / Istanbul / Turkey
Phone: +90 216 540 04 67
Fax: +90 216 540 04 87
www.tungaloy.com/tr

Tungaloy Benelux b.v.

Tjalk 70
NL-2411 NZ Bodegraven, Netherlands
Phone: +31 172 630 420
Fax: +31 172 630 429
www.tungaloy.com/nl

Tungaloy Croatia

Ulica bana Josipa Jelačića 87,
10430, Samobor, Croatia
Phone: +385 1 3326 604
Fax: +385 1 3327 683
www.tungaloy.com/hr

Tungaloy Cutting Tool (Shanghai) Co.,Ltd.

Rm No 401 No.88 Zhabei
Jiangchang No.3 Rd
Shanghai 200436, China
Phone: +86-21-3632-1880
Fax: +86-21-3621-1918
www.tungaloy.com/cn

Tungaloy Cutting Tools (Taiwan) Co.,Ltd.

9F. No.293, Zhongyang Rd,
Xinzhuan Dist, New Taipei City,
24251 Taiwan
Phone: +886-2-8521-9986
Fax: +886-2-8521-8935
www.tungaloy.com/tw

Tungaloy Cutting Tools (Thailand) Co.,Ltd.

Interlink tower 4th Fl.
1858/5-7 Bangna-Trad Road
km.5 Bangna, Bangna, Bangkok 10260
Thailand
Phone: +66-2-751-5711
Fax: +66-2-751-5715
www.tungaloy.com/th

Tungaloy Singapore (Pte.), Ltd.

62 Ubi Road 1, #06-11 Oxley BizHub 2
Singapore 408734
Phone: +65-6391-1833
Fax: +65-6299-4557
www.tungaloy.com/sg

Tungaloy Vietnam

LE04.38, Lexington Residence
67 Mai Chi Tho St., Dist. 2,
Ho Chi Minh City, Vietnam
Phone: +84-2837406660
www.tungaloy.com/sg

Tungaloy India Pvt. Ltd.

One International Center,
Unit # 902-A, 9th Floor,
Tower 1, Senapati Bapat Marg,
Elphinstone Road (West),
Mumbai -400013, India
Phone: +91-22-6124-8804
Fax: +91-22-6124-8899
www.tungaloy.com/in

Tungaloy Korea Co., Ltd

#1312, Byucksan Digital Valley 5-ch
Beotkkot-ro 244, Geumcheon-gu
153-788 Seoul, Korea
Phone: +82-2-2621-6161
Fax: +82-2-6393-8952
www.tungaloy.com/kr

Tungaloy Malaysia Sdn Bhd

50 K-2, Kelana Mall, Jalan SS6/14
Kelana Jaya, 47301
Petaling Jaya, Selangor Darul Ehsan
Malaysia
Phone: +603-7805-3222
Fax: +603-7804-8563
www.tungaloy.com/my

Tungaloy Australia Pty Ltd

Unit 68 1470 Ferntree Gully Road
Knoxfield 3180 Victoria, Australia
Phone: +61-3-9755-8147
Fax: +61-3-9755-6070
www.tungaloy.com/au

PT. Tungaloy Indonesia

Kompleks Grand Wisata Block AA-10 No.3-5
Cibitung
Bekasi 17510, Indonesia
Phone: +62-21-8261-5808
Fax: +62-21-8261-5809
www.tungaloy.com/id



tungaloy.com

follow us at:

facebook.com/tungaloyjapan

twitter.com/tungaloyjapan

www.youtube.com/tungaloycorporation

Distributed by:



FIND US ON THE CLOUD!
machiningcloud.com



AS9100 Certified
78006
2015.11.04
ISO14001 Certified
EC97J1123
1997.11.26

Produced from Recycled paper

Jun. 2022 (TJ)