

CONTENTS



General product information

(Imperial version does not exist)

Added products



FNGA/FNGG/YNGA/YNGG

New FNGA (45°) and YNGA (25°) inserts for expanded application coverage

[View](#)

T-CBN SERIES

Tungaloy Report No. 510S1-G

New FNGA (45°) and YNGA (25°) inserts for expanded application coverage





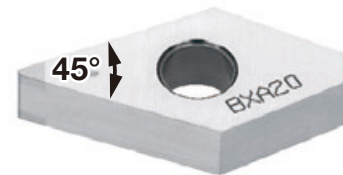
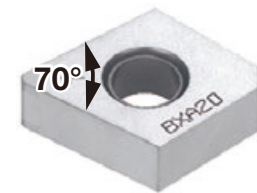
For **high efficiency in finishing** hardened steel, cast iron and sintered metals

■ New CBN inserts for general turning

GNGA insert with 70° corner angle

New FNGA insert with 45° corner angle

- Smaller corner angle provides the insert with greater clearance between the insert flank and workpiece surface, allowing better chip flow and evacuation.
- Enables greater D.O.C. in face turning applications in which the insert is pulled outward (fed away from the workpiece center).



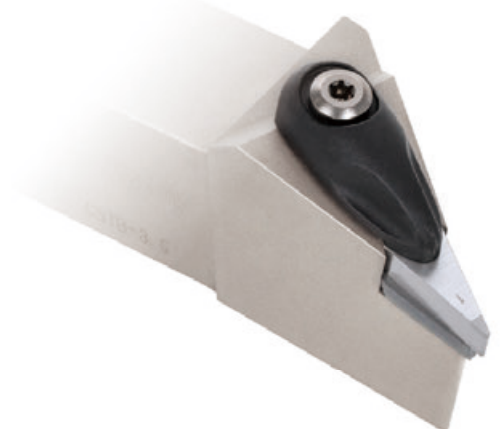
New YNGA insert with 25° corner angle

Allows undercutting, V grooving, and other applications that are not possible with traditional V inserts.



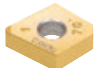





■ High versatility

- Existing ISO turning toolholder can be used for these inserts
 - For GNGA insert: use the holder for CN**1204 insert
 - For FNGA insert: use the holder for DN**1504 insert
 - For YNGA insert: use the holder for VN**1604 insert
- No offsets needed compared to ISO inserts, due to same geometry of cutting edge position
- Double sided insert with 2 cutting edges



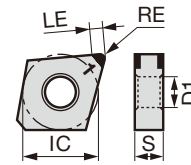
CBN Insert NEGATIVE TYPE

- : Continuous cutting
- ◐ : Light interrupted cutting
- ✱ : Heavy interrupted cutting

Shape	Designation	Material						Dimension (mm)					Edge prep.									
		P	M	K	N	S	H	No. of corners	LE	RE	IC	S	D1	Standard	Sharp edge	L	LF	LC	H	Wiper	Chipbreaker	
		Steel	Stainless	Cast iron	Non-ferrous	Superalloy	Hard material															BXM10
2QP-GNGA (Corner angle 70°) 	*2QP-GNGA120402		●	●										○								
	*2QP-GNGA120404		●	●	●	●								○								
	*2QP-GNGA120408		●	●	●	●	●	●	●					○								
	*2QP-GNGA120412		●	●	●	●	●	●	●					○								
2QP-GNGA**-L (Corner angle 70°) 	*2QP-GNGA120402-L			●	●										○							
	*2QP-GNGA120404-L			●	●										○							
	*2QP-GNGA120408-L			●	●										○							
	*2QP-GNGA120412-L			●	●										○							
2QP-GNGA**-LF (Corner angle 70°) 	*2QP-GNGA120402-LF			●	●											○						
	*2QP-GNGA120404-LF			●	●											○						
	*2QP-GNGA120408-LF			●	●											○						
	*2QP-GNGA120412-LF			●	●											○						
2QP-GNGA**-LC (Corner angle 70°) 	*2QP-GNGA120402-LC			●	●												○					
	*2QP-GNGA120404-LC			●	●												○					
	*2QP-GNGA120408-LC			●	●												○					
	*2QP-GNGA120412-LC			●	●												○					
2QP-GNGA**-H (Corner angle 70°) 	*2QP-GNGA120404-H			●	●															○		
	*2QP-GNGA120408-H			●	●																○	
	*2QP-GNGA120412-H			●	●																○	
2QP-GNGG**-HP (Corner angle 70°) 	*2QP-GNGG120404-HP	●	●	●																	○	
	*2QP-GNGG120408-HP	●	●	●																		○
	*2QP-GNGG120412-HP	●	●	●																		○

* Tungaloy's standard

● : Line up



www.tungaloy.com

follow us at:
facebook.com/tungaloyjapan
twitter.com/tungaloyjapan
www.youtube.com/tungaloycorporation



AS9100 Certified
 78006
 2015.11.04
 ISO 14001 Certified
 EC97J1123
 1997.11.26

Distributed by:



FIND US ON THE CLOUD!
machingcloud.com

